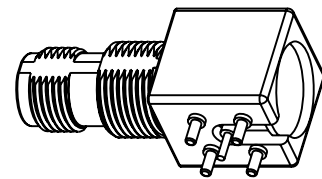


NOTES:

1. MATERIALS AND FINISHES:
  - BODY - ZINC ALLOY, MATTE TIN PLATING
  - CONTACT - BRASS, GOLD PLATING
  - COVER - BRASS, MATTE TIN PLATING
  - FRONT INSULATOR - PTFE
  - REAR INSULATOR - PBT
2. ELECTRICAL:
  - A. IMPEDANCE: 50 OHM
  - B. FREQUENCY RANGE: DC - 1.0 GHz
  - C. VSWR(RETURN LOSS): 1.4 (16 dB), MAX.
  - D. DIELECTRIC WITHSTANDING VOLTAGE: 1500 VRMS, MIN.
3. MECHANICAL:
  - A. DURABILITY: 100 CYCLES MIN.
  - B. TEMPERATURE RANGE: -65° C TO 165° C
4. PACKAGE PER SPEC 349-50728. KEY ELEMENTS INCLUDE:
  - A. THE MAXIMUM WEIGHT OF ALL OUTER CARTONS IS 40 LBS. THIS INCLUDES INTERM PROCESS CONTAINERS.
  - B. ALL PARTIALS MUST BE PACKAGED SEPARATELY AND CLEARLY MARKED "PARTIAL".
  - C. ALL BOX FILLING MATERIAL TO FILL EMPTY SPACE IN CARTONS MUST BE ROHS 2002 COMPLIANT.
  - D. THE USE OF STAPLES FOR CLOSING ANY OF THE PACKAGES IS UNACCEPTABLE. TAPE MUST BE USED.
  - E. BULK PACKAGES OF CONNECTORS MUST INCLUDE A DESICCANT TO PROTECT AGAINST HUMIDITY.

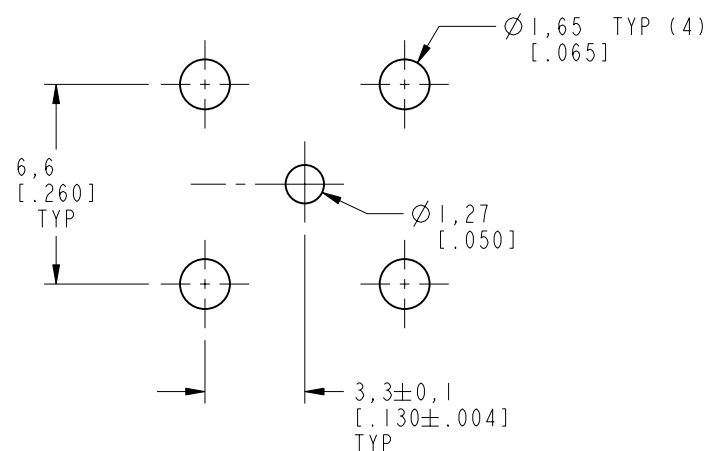
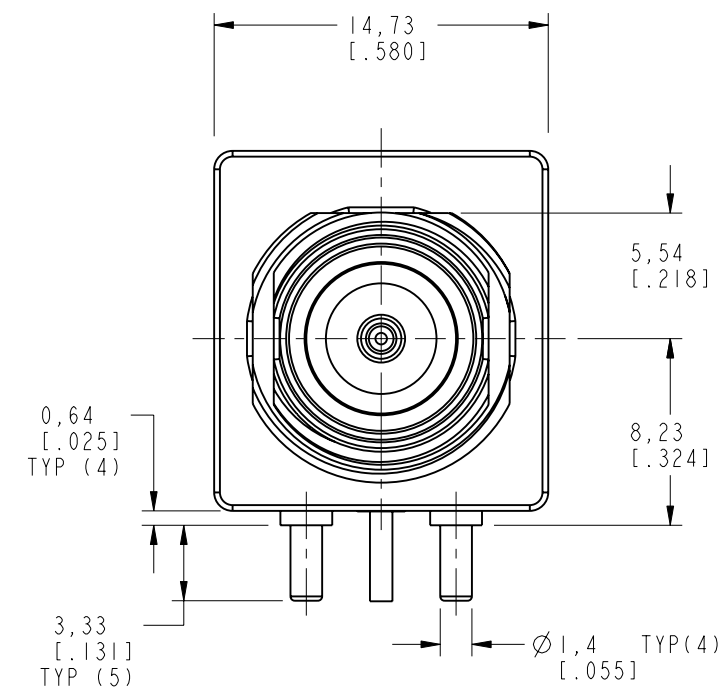
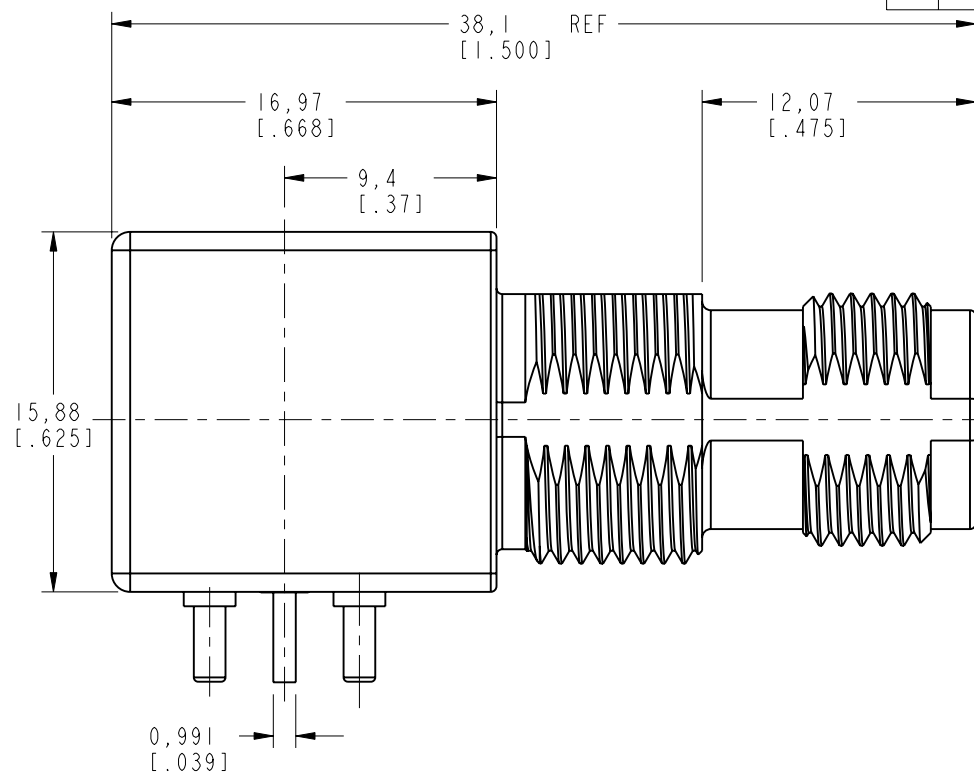


SCALE 1.000

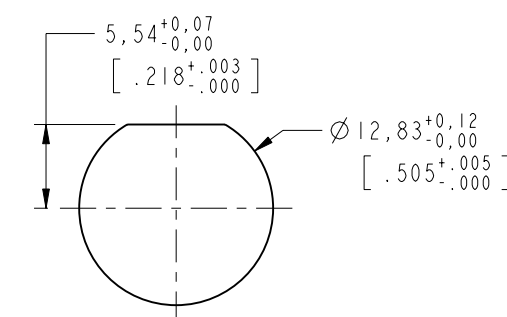
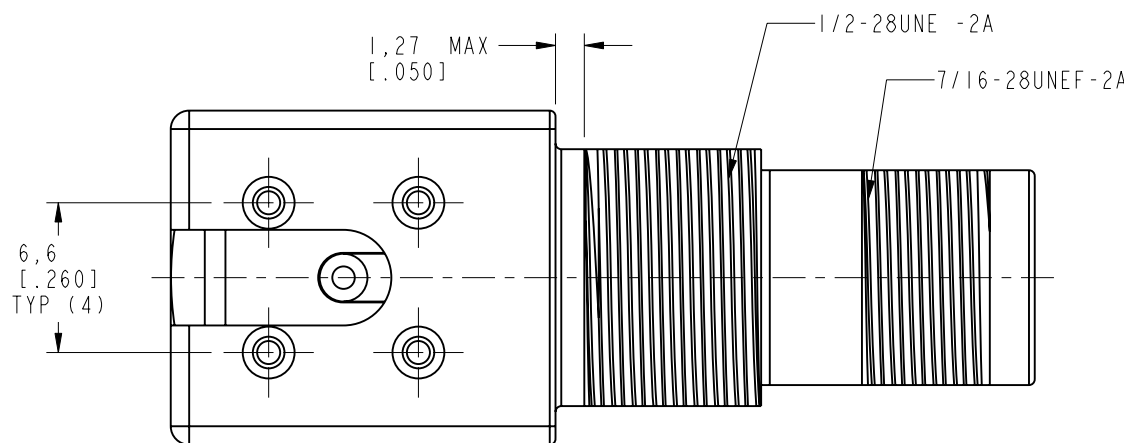
THIRD ANGLE PROJ.

REVISIONS

| REV | DESCRIPTION  | DATE      | ECO   | APPR  |
|-----|--|-----------|-------|-------|
| A   | RELEASE TO MFG.  | 27-Jun-05 | 45603 | HP    |
| E   | SYNC ARFA AND DANBURY DRAWING; BODY, INSULATOR AND CENTER PIN CHANGE WITH REAL NUMBER. | 12-Jul-11 | 48621 | D.H   |
| F   | MODIFY NOTE 1 REAR INSULATOR MATERIAL SPEC. \RD-DMI306270IS2                           | 09-Jul-13 | 49621 | HARRY |



**RECOMMENDED PCB MOUNTING DIMENSIONS**



**RECOMMENDED PANEL MOUNTING HOLE**

**CUSTOMER OUTLINE DRAWING**

ALL OTHER SHEETS ARE FOR INTERNAL USE ONLY

|  |   |           |           |  |  |
|--|---|-----------|-----------|--|--|
| UNLESS OTHERWISE SPECIFIED, DIMENSIONS ARE IN METRIC AND TOLERANCES ARE:<br><0.5mm ±0.05mm    0.5 - 6mm ±0.1mm    6 - 30mm ±0.2mm    30 - 120mm ±0.3mm    ANGLES ±1°   | MATERIAL  | DRAWN     | DATE      | TITLE<br>TNC (RP) R/A<br>PCB BULKHEAD<br>BODY TIN PLATED | Amphenol RF<br>Danbury CT USA, Tainan, Taiwan, Shenzhen, China<br>www.amphenolrf.com |
|  | SEE NOTE  | S. DUAN   | 02-Jul-13 |  |  |
| NOTICE - These drawings, specifications, or other data (1) are, and remain the property of Amphenol corp. (2) must be returned upon request; and (3) are confidential and not to be disclosed to any person other than those to whom they are given by Amphenol Corp. the finishing of these drawings, specifications, or other data by Amphenol Corp., or to any other person to anyone for any purpose is not to be regarded by implication or otherwise in any manner licensing, granting rights to permitting such holder or any other person to manufacture, use or sell any product, process or design, patented or otherwise, that may in any way be related to or disclosed by said drawings, specifications, or other data. | REFERENCE   | ENGINEER  | DATE      | SCALE: 3.0:1.0   | DRAWING NO. 31-6240-3<br>ITEM NO. 31-6240-3<br>PART NO. 31-6240-3                    |
|  | EAR # 1608 AND 611X-4199-100  | H. PARIKH | 21-Jun-05 | SHEET 2 OF 2   |  |
|  | CONFIGURATION LEVEL: <input type="checkbox"/> <input type="checkbox"/> <input type="checkbox"/> | APPROVED  | DATE      | REV  |  |
| FINISH PER KAI JACK SPEC EP-SS-9700  | S. HSIEH  | 02-Jul-13 | F         | DWG SIZE   |  |
|  |   |           |           | B  |  |