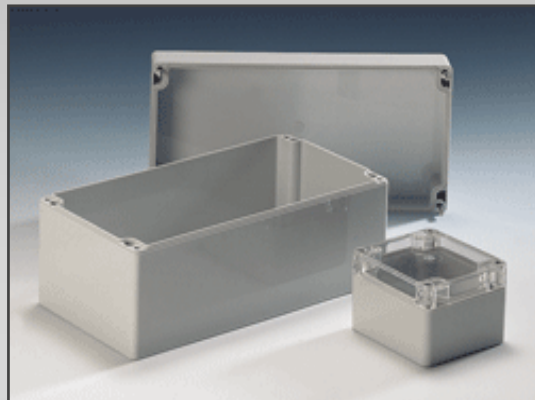


Polycarbonate 03

Polycarbonate 33

ABS 09



For Finishing Services, Product Support, or to Order

Call 1-301-696-9800

UL 50



- Light-weight plastic enclosures for industrial applications
- Polycarbonate enclosure with standard or transparent lid
- ABS enclosure with standard lid
- Optional: EMC coated

### Technical data

**Material:**

Polycarbonate

ABS

**Color:**

similar to RAL 7035, light gray

special color on request

**Ingress protection:**

IP 66 to EN 60529

**Surface resistance:**

PC:  $>10^{15}$  Ohm / VDE 0303

ABS:  $4 \times 10^{14}$  Ohm / VDE 0303

**Dielectric strength:**

PC:  $>30$  KV/mm VDE 0303

ABS: 24 KV/mm VDE 0303

**Temperature range:**

PC:  $-40^{\circ}\text{C}$  to  $+100^{\circ}\text{C}$

ABS:  $-40^{\circ}\text{C}$  to  $+80^{\circ}\text{C}$

**Insulation:**

full protective insulation to VDE 0100

**Flammability:**

PC: V2 / UL 94

ABS: HB / UL 94

**Toxicity:**

free of halogen

### Included in delivery

Plastic enclosure consisting of lid, seal, incl. captive +/- stainless steel screws, base with 2 self-tapping fastening screws for internal mounting

# Polycarbonate / ABS

## Program range

Polycarbonate enclosure	Polycarbonate enclosure with transparent lid	ABS enclosure	Dimensions (mm) W x L x H	External mounting brackets	Mounting plate Pertinax Thickness in mm	Silicone lid seal	Small rubber table feet	PC external hinge approx. 150° <sup>1)</sup>	Sealable lid seal <sup>2)</sup>	EMC version aluminum flashed
03.05 05 04	33.05 05 04	09.05 05 04	50 x 52 x 35		1.5					•
03.05 07 04	33.05 07 04	09.05 07 04	50 x 65 x 35		1.5	•				•
03.08 08 06	33.08 08 06	09.08 08 06	80 x 82 x 55	•	1.5	•	•		•	•
03.08 08 09	33.08 08 09	09.08 08 09	80 x 82 x 85	•	1.5	•	•		•	•
03.08 12 06	33.08 12 06	09.08 12 06	80 x 120 x 55	•	1.5	•	•	•	•	•
03.08 12 09	33.08 12 09	09.08 12 09	80 x 120 x 85	•	1.5	•	•	•	•	•
03.08 16 06	33.08 16 06	09.08 16 06	80 x 160 x 55	•	1.5	•	•	•	•	•
03.08 16 09	33.08 16 09	09.08 16 09	80 x 160 x 85	•	1.5	•	•	•	•	•
03.08 23 09	33.08 23 09	09.08 23 09	80 x 230 x 85	•	1.5	•	•	•	•	•
03.12 12 06	33.12 12 06	09.12 12 06	120 x 122 x 55	•	2	•	•	•	•	•
03.12 12 09	33.12 12 09	09.12 12 09	120 x 122 x 85	•	2	•	•	•	•	•
03.12 12 11	33.12 12 11	09.12 12 11	120 x 122 x 105	•	2	•	•	•		•
03.12 16 09	33.12 16 09	09.12 16 09	120 x 160 x 90	•	2	•	•	•		•
03.12 16 14	33.12 16 14	09.12 16 14	120 x 160 x 140	•	2	•	•	•		•
03.12 20 08	33.12 20 08	09.12 20 08	120 x 200 x 75	•	2	•	•	•	•	•
03.12 20 09	33.12 20 09	09.12 20 09	120 x 200 x 90	•	2	•	•	•		•
03.12 24 10	33.12 24 10	09.12 24 10	120 x 240 x 100	•	2	•	•	•		•
03.15 20 08	33.15 20 08	09.15 20 08	150 x 200 x 75	•	2.5	•	•	•	•	•
03.16 24 09	33.16 24 09	09.16 24 09	160 x 240 x 90	•	2.5 <sup>3)</sup>	•	•	•	•	•
03.16 24 12	33.16 24 12	09.16 24 12	160 x 240 x 120	•	2.5	•	•	•		•
03.16 36 10	-	09.16 36 10	160 x 360 x 100	•	2.5	•	•	•		•
03.20 36 15	33.20 36 15	09.20 36 15	200 x 360 x 150		2.5	•		•		•
03.23 30 09	33.23 30 09	09.23 30 09	230 x 300 x 85	•	2	•	•	•		•
03.23 30 11	33.23 30 11	09.23 30 11	230 x 300 x 110	•	2	•	•	•		•
-	-	09.40 36 15	360 x 400 x 150		2 <sup>3)</sup>	•		•		•

<sup>1)</sup> Please quote mounting side A-D when ordering. <sup>2)</sup> Stainless steel <sup>3)</sup> Galvanized sheet steel Transparent lid for ABS enclosure not available.

## Other accessories

Small table feet (for sizes up to xx.15 20 08)	12.05 10 00 1
Small table feet (for sizes up to xx.16 24 19)	12.05 10 00 2
Threaded inserts M4 (10 pcs.)	10.03 70 04
Threaded inserts M3 (10 pcs.)	10.03 70 03
Set of external hinges (2 pcs.)	10.02 12 01

**Terminal mounting**

Phoenix														Earth conductor connections																
DIN rail TS15	X	X	X																											
DIN rail TS35				X	X	X	X	X	X	X	X	X	X	X	X															
Voltage (V)	250	400	500	500	800	800	800	800	800	800	1000	1000	1000	1000	1000															
Current (A)	24	32	41	17	24	32	41	57	76	101	150	150	232	309	415															
Nom. cross-section (mm²)	2.5	3	5	1.5	2.5	2.5	4	6	10	16	35	50	95	150	240															
Terminal width (mm)	5.2	5.2	6.2	4.2	5.2	5.2	6.2	8.2	10.2	12.2	15.2	20	25	31	36															
Terminal type																														
Type	MBK 2,5 E	MBK 3 / E-Z	MBK 5 / E-Z	UK 1,5 N	UK 2,5 N	UK 3 N	UK 5 N	UK 6 N	UK 10 N	UK 16 N	UK 35	UKH 50	UKH 95	UKH 150	UKH 240	MUKG 5 insulated, green/yellow	USLKG 1,5 N insulated green/yellow	USLKG 2,5 N insulated green/yellow	USLKG 6 N insulated green/yellow	USLKG 10 N insulated green/yellow	USLKG 16 N insulated green/yellow	USLKG 3 insulated green/yellow	USLKG 5 insulated green/yellow	USLKG 50 insulated green/yellow	USLKG 95 insulated green/yellow	Earthing bar 2.5 mm² with cable lug max. 10 mm²	Earthing screw M 4 with cable lug max. 6 mm²	M6 with cable lug max. 35 mm²		
03.05 05 04																														
03.05 07 04																														1
03.08 08 06	10	10	8	12	10	10	8	6	5	4	3	2	2	1	1														2	
03.08 08 09	10	10	8	12	10	10	8	6	5	4	3	2	2	1	1														2	
03.08 12 06	18	18	15	22	18	18	15	11	9	7	6	4	3	3	2														2	
03.08 12 09	18	18	15	22	18	18	15	11	9	7	6	4	3	3	2														2	
03.08 16 06	25	25	21	32	25	25	21	16	13	11	8	6	5	4	3														2	
03.08 16 09	25	25	21	32	25	25	21	16	13	11	8	6	5	4	3														2	
03.08 23 09	39	39	32	48	39	39	32	24	19	16	13	10	8	6	5														2	
03.12 12 06	16	16	14	20	16	16	14	10	8	7	5	4	3	2	2														2	
03.12 12 09	16	16	14	20	16	16	14	10	8	7	5	4	3	2	2														2	
03.12 12 11	16	16	14	20	16	16	14	10	8	7	5	4	3	2	2														2	
03.12 16 09	24	24	20	30	24	24	20	15	12	10	8	6	5	4	3														2	
03.12 16 14	24	24	20	30	24	24	20	15	12	10	8	6	5	4	3														4	
03.12 20 08	32	32	27	40	32	32	27	20	16	13	11	8	6	5	4														4	
03.12 20 09	32	32	27	40	32	32	27	20	16	13	11	8	6	5	4														4	
03.12 24 10	40	40	33	49	40	40	33	25	20	17	13	10	8	6	5														4	
03.15 20 08	30	30	23	385	30	30	23	18	14	12	9	7	5	4	4														4	
03.16 24 09	40	40	33	49	40	40	33	25	20	17	13	10	8	6	5														4	
03.16 24 12	40	40	33	49	40	40	33	25	20	17	13	10	8	6	5														4	
03.16 36 10	62	62	52	76	62	62	52	39	31	26	21	16	12	10	8														4	
03.20 36 15	62	62	52	76	62	62	52	39	31	26	21	16	12	10	8														4	
03.23 30 09	51	51	43	63	51	51	43	32	26	21	17	13	10	8	7														4	
03.23 30 11	51	51	43	63	51	51	43	32	26	21	17	13	10	8	7														4	
09.40 36 15	62*	62*	52*	76*	62*	62*	52*	39*	31*	26*	21*	16*	12*	10*	8*														4	
09.40 36 15	62**	62**	52**	76**	62**	62**	52**	39**	31**	26**	21**	16**	12**	10**	8**														4	

\* 2 DIN rails possible = double number of terminals  
 \*\* 3 DIN rails possible = triple number of terminals

# Polycarbonate / ABS

## Terminal mounting

Weidmüller																	Earth conductor connections											
DIN rail TS15				X	X	X	X																					
DIN rail TS35								X	X	X	X	X	X	X	X	X												
Voltage (V)	400	400	400	250	275	250	400	500	800	800	800	800	1000	1000	1000	1000												
Current (A)	32	32	32	17	15	24	32	24	24	32	41	57	76	125	192	232												
Nom. crosssection (mm²)	4	4	4	1.5	1.5	2.5	4	2.5	2.5	4	6	10	16	35	70	95												
Terminal width (mm)	38	52	92	5	3.5	5	6	5	5	6	8	10	12	16	20.5	27												
Terminal type																												
Type	BK 4 (4-polig)	BK 6 (6-polig)	BK 12 (12-polig)	AKZ 1.5	WDU 1.5 / R 3.5	AKZ 2.5	AKZ 4	WDU 2.5 N	WDU 2.5	WDU 4	WDU 6	WDU 10	WDU 16	WDU 35	WDU 70 N	WDU 70 / 95	WPE 2.5 green/yellow	WPE 4 green/yellow	WPE 6 green/yellow	WPE 10 green/yellow	WPE 16 green/yellow	WPE 35 green/yellow	WPE 70 / 95 green/yellow	Earthing bar 2.5 mm² with cable lug max. 10 mm²	Earthing screw M4 with cable lug max. 6 mm²	M6 with cable lug max. 35 mm²		
<b>03.05 05 04</b>	1																											
<b>03.05 07 04</b>	1																											
<b>03.08 08 06</b>	1	1		9	13	9	7	9	9	7	5	4	3	2	2	1												
<b>03.08 08 09</b>	1	1		9	13	9	7	9	9	7	5	4	3	2	2	1												
<b>03.08 12 06</b>				17	25	17	14	17	17	14	11	8	7	5	4	3												
<b>03.08 12 09</b>				17	25	17	14	17	17	14	11	8	7	5	4	3												
<b>03.08 16 06</b>				25	36	25	21	25	25	21	16	12	10	8	6	4												
<b>03.08 16 09</b>				25	36	25	21	25	25	21	16	12	10	8	6	4												
<b>03.08 23 09</b>				39	56	39	32	39	39	32	24	19	16	12	9	7												
<b>03.12 12 06</b>				16	24	16	14	16	16	14	10	8	7	5	4	3												
<b>03.12 12 09</b>				16	24	16	14	16	16	14	10	8	7	5	4	3												
<b>03.12 12 11</b>				16	24	16	14	16	16	14	10	8	7	5	4	3												
<b>03.12 16 09</b>				24	35	24	20	24	24	20	15	12	10	7	6	4												
<b>03.12 16 14</b>				24	35	24	20	24	24	20	15	12	10	7	6	4												
<b>03.12 20 08</b>				32	46	32	27	32	32	27	20	16	13	10	8	6												
<b>03.12 20 09</b>				32	46	32	27	32	32	27	20	16	13	10	8	6												
<b>03.12 24 10</b>				40	58	40	34	40	40	34	25	20	17	12	10	7												
<b>03.15 20 08</b>				28	41	28	24	28	28	24	18	14	12	9	7	5												
<b>03.16 24 09</b>				40	58	40	34	40	40	34	25	20	17	12	9	7												
<b>03.16 24 12</b>				40	58	40	34	40	40	34	25	20	17	12	9	7												
<b>03.16 36 10</b>				63	91	63	53	63	63	53	39	31	26	19	15	11												
<b>03.20 36 15</b>				63	91	63	53	63	63	53	39	31	26	19	15	11												
<b>03.23 30 09</b>				52	95	52	44	52	52	44	33	26	22	16	12	9												
<b>03.23 30 11</b>				52	95	52	44	52	52	44	33	26	22	16	12	9												
<b>09.40 36 15</b>				63*	91*	63*	53*	63*	63*	53*	39*	31*	26*	19*	15*	11*												
<b>09.40 36 15</b>				63**	91**	63**	53**	63**	63**	53**	39**	31**	26**	19**	15**	11**												

\* 2 DIN rails possible = double number of terminals

\*\* 3 DIN rails possible = triple number of terminals

Accessories

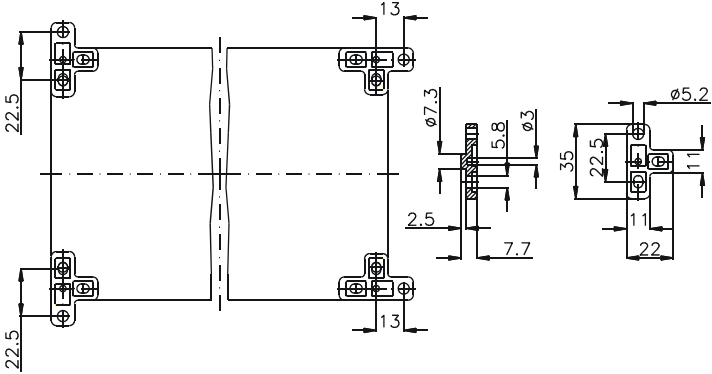


**Mounting plate**  
for fitting electro-mechanical components

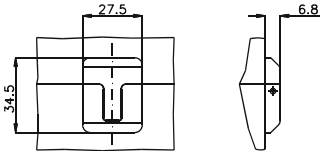
Type	Order No.	Type	Order No.
	mounting plate		mounting plate
03/09/33.05 05 04	10.01 20 01	03/09/33.12 16 14	10.01 20 07
03/09/33.05 07 04	10.01 20 02	03/09/33.12 20 08	10.01 20 08
03/09/33.08 08 06	10.01 20 03	03/09/33.12 20 09	10.01 20 08
03/09/33.08 08 09	10.01 20 03	03/09/33.12 24 10	10.01 20 09
03/09/33.08 12 06	10.01 20 04	03/09/33.15 20 08	10.01 20 10
03/09/33.08 12 09	10.01 20 04	03/09/33.16 24 09	10.01 20 11
03/09/33.08 16 06	10.01 20 05	03/09/33.16 24 12	10.01 20 11
03/09/33.08 16 09	10.01 20 05	03/09/33.16 36 10	10.01 20 12
03/09/33.08 23 09	10.01 20 16	03/09/33.20 36 15	10.01 20 13
03/09/33.12 12 06	10.01 20 06	03/09/33.23 30 09	10.01 20 14
03/09/33.12 12 09	10.01 20 06	03/09/33.23 30 11	10.01 20 14
03/09/33.12 12 11	10.01 20 06	09.40 36 15	10.01 20 15
03/09/33.12 16 09	10.01 20 07		



**External mounting brackets** (set = 4 pcs.)  
Order No. 10.03 12 01



**External hinge** (set = 2 pcs.)  
Order No. 10.02 12 01



**Threaded inserts**  
Order No.  
10.03 70 04 set of 10 pcs. M4  
10.03 70 03 set of 10 pcs. M3

Type: **...05 05 04**

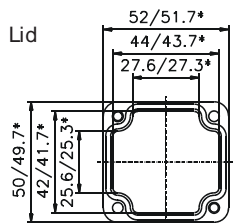
External dimensions: **50 x 52 x 35 mm**

Weight: **40 g**

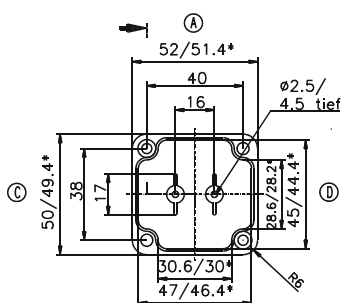
DIN rail length in mm	max. fitting length in mm	Mounting plate (thickness in mm)	External mounting brackets	External hinge* set	EMC version	Self-adhesive rubber feet set	Silicone lid seal	Sealable lid screw in steel
		1.5			•			

Maximum number of cable glands to **DIN 50262\***

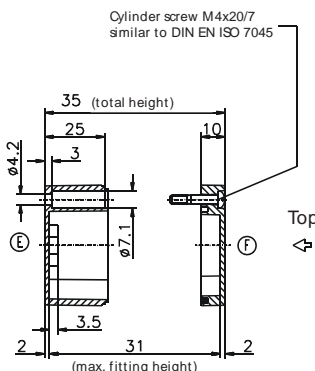
M	Corner dim.	Sde		PG	Corner dim.	Sde	
		A/B	C/D			A/B	C/D
12	17.25	2	1	7	17.25	2	1
16	25.30			9	21.85	1	1
20	27.60			11	25.30		
25	37.95			13.5	27.60		
32	48.30			16	31.05		
40	60.95			21	37.95		
50	69.00			29	48.30		
63	74.75			36	60.95		
				42	69.00		
				48	74.75		



\* = Conical form tapering downwards  
Free dimensions-tolerance to DIN 16901 - 130



Base



Cylinder screw M4x20/7 similar to DIN EN ISO 7045

Top

Type: **...05 07 04**

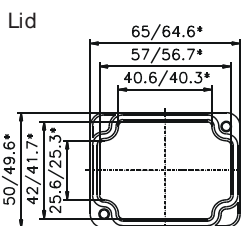
External dimensions: **50 x 65 x 35 mm**

Weight: **50 g**

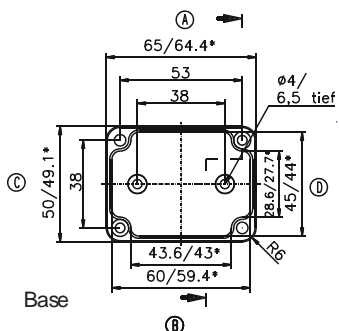
DIN rail length in mm	max. fitting length in mm	Mounting plate (thickness in mm)	External mounting brackets	External hinge* set	EMC version	Self-adhesive rubber feet set	Silicone lid seal	Sealable lid screw in steel
TS15		1.5			•			•

Maximum number of cable glands to **DIN 50262\***

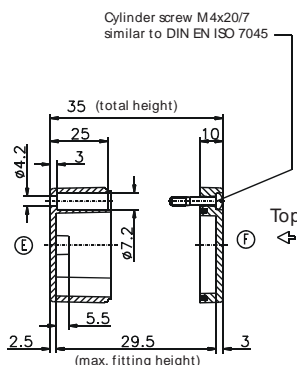
M	Corner dim.	Sde		PG	Corner dim.	Sde	
		A/B	C/D			A/B	C/D
12	17.25	2	2	7	17.25	2	2
16	25.30			9	21.85	2	1
20	27.60			11	25.30		
25	37.95			13.5	27.60		
32	48.30			16	31.05		
40	60.95			21	37.95		
50	69.00			29	48.30		
63	74.75			36	60.95		
				42	69.00		
				48	74.75		



\* = Conical form tapering downwards  
Free dimensions-tolerance to DIN 16901 - 130



Base



Cylinder screw M4x20/7 similar to DIN EN ISO 7045

Top

Type: **...08 08 06**

External dimensions: **80 x 82 x 55 mm**

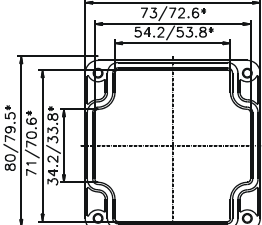
Weight: **140 g**

DIN rail length in mm	max. fitting length in mm	Mounting plate (thickness in mm)	External mounting brackets	External hinge* set	EMC version	Self-adhesive rubber feet set	Silicone lid seal	Sealable lid screw in steel	
TS15									
68	56	1.5	•		•	•	•	•	

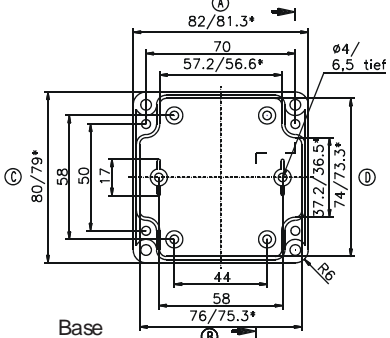
Maximum number of cable glands to **DIN 50262\***

M	Corner dim.	Sde		PG	Corner dim.	Sde	
		A/B	C/D			A/B	C/D
12	17.25	6	4	7	17.25	6	4
16	25.30	2	2	9	21.85	3	2
20	27.60	2	1	11	25.30	2	1
25	37.95	1	1	13.5	27.60	2	1
32	48.30			16	31.05	2	1
40	60.95			21	37.95	1	1
50	69.00			29	48.30		
63	74.75			36	60.95		
				42	69.00		
				48	74.75		

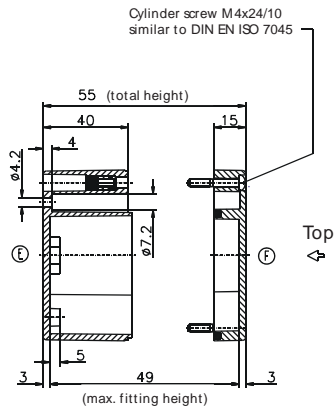
Lid



\* = Conical form tapering downwards  
Free dimensions-tolerance to DIN 16901 - 130



Base



Type: **...08 08 09**

External dimensions: **80 x 82 x 85 mm**

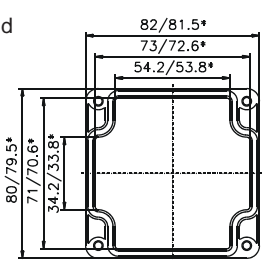
Weight: **175 g**

DIN rail length in mm	max. fitting length in mm	Mounting plate (thickness in mm)	External mounting brackets	External hinge* set	EMC version	Self-adhesive rubber feet set	Silicone lid seal	Sealable lid screw in steel	
TS15									
68	56	1.5	•		•	•	•	•	

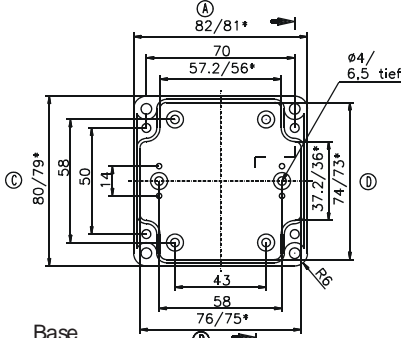
Maximum number of cable glands to **DIN 50262\***

M	Corner dim.	Sde		PG	Corner dim.	Sde	
		A/B	C/D			A/B	C/D
12	17.25	10	6	7	17.25	10	6
16	25.30	5	2	9	21.85	6	3
20	27.60	4	2	11	25.30	5	2
25	37.95	2	1	13.5	27.60	4	2
32	48.30	1	1	16	31.05	4	2
40	60.95	1		21	37.95	1	1
50	69.00			29	48.30	1	
63	74.75			36	60.95	1	
				42	69.00		
				48	74.75		

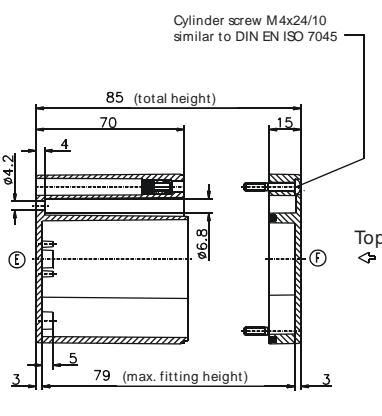
Lid



\* = Conical form tapering downwards  
Free dimensions-tolerance to DIN 16901 - 130



Base





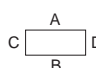
Type: **...08 12 06**

External dimensions: **80 x 120 x 55 mm**

Weight: **180 g**

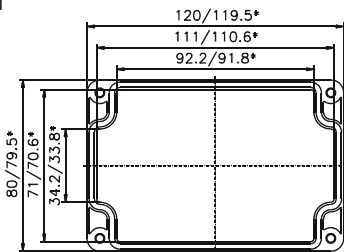
DIN rail length in mm	max. fitting length in mm	Mounting plate (thickness in mm)	External mounting brackets	External hinge* set	EMC version	Self-adhesive rubber feet set	Silicone lid seal	Sealable lid screw in steel
TS15	94	1.5	•	•	•	•	•	•

Maximum number of cable glands to **DIN 50262\***

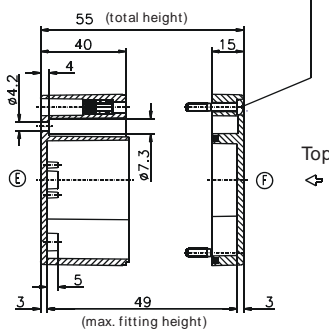
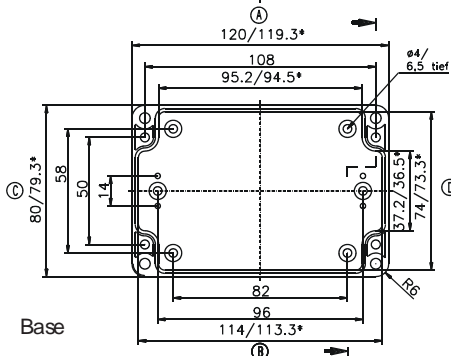


M	Corner dim.	Sde		PG	Corner dim.	Sde	
		A/B	C/D			A/B	C/D
12	17.25	10	3	7	17.25	10	3
16	25.30	4	1	9	21.85	6	2
20	27.60	3	1	11	25.30	4	1
25	37.95	2		13.5	27.60	3	1
32	48.30			16	31.05	3	1
40	60.95			21	37.95	2	
50	69.00			29	48.30		
63	74.75			36	60.95		
				42	69.00		
				48	74.75		

Lid



\* = Conical form tapering downwards  
Free dimensions-tolerance to DIN 16901 - 130



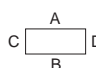
Type: **...08 12 09**

External dimensions: **80 x 120 x 85 mm**

Weight: **225 g**

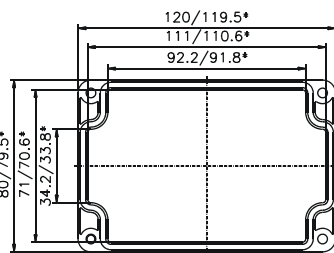
DIN rail length in mm	max. fitting length in mm	Mounting plate (thickness in mm)	External mounting brackets	External hinge* set	EMC version	Self-adhesive rubber feet set	Silicone lid seal	Sealable lid screw in steel
TS15	94	1.5	•	•	•	•	•	•

Maximum number of cable glands to **DIN 50262\***

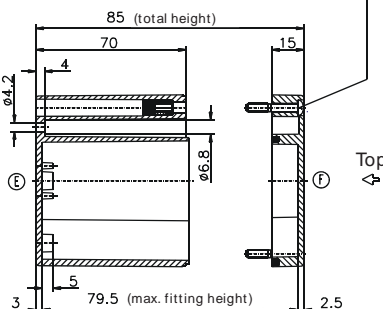
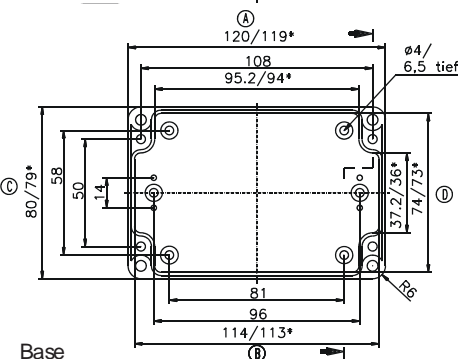


M	Corner dim.	Sde		PG	Corner dim.	Sde	
		A/B	C/D			A/B	C/D
12	17.25	16	6	7	17.25	16	6
16	25.30	8	2	9	21.85	11	3
20	27.60	6	2	11	25.30	8	2
25	37.95	3	1	13.5	27.60	6	2
32	48.30	2	1	16	31.05	6	2
40	60.95	1		21	37.95	3	1
50	69.00			29	48.30	2	
63	74.75			36	60.95	1	
				42	69.00		
				48	74.75		

Lid



\* = Conical form tapering downwards  
Free dimension-tolerance to DIN 16901 - 130



Type: **. . .08 16 06**

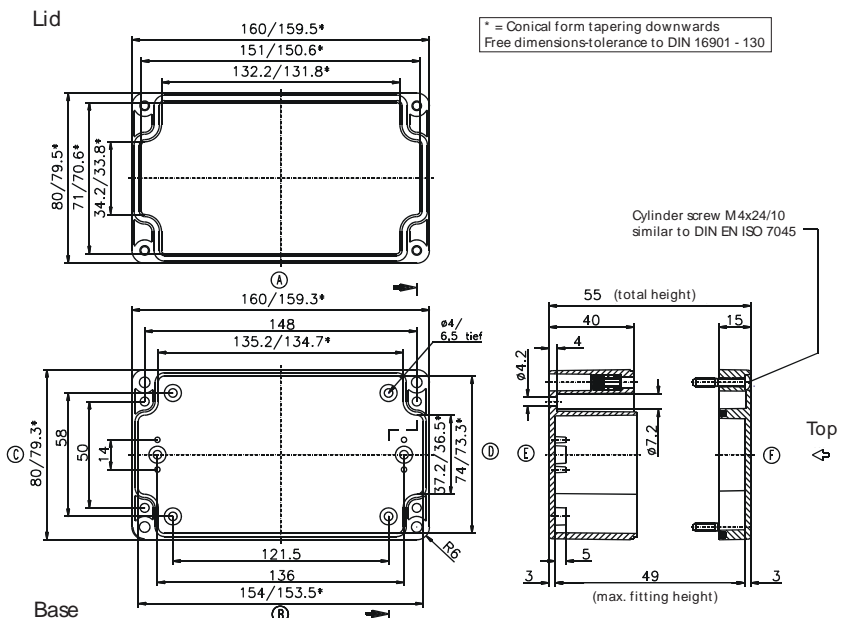
External dimensions: **80 x 160 x 55 mm**

Weight: **235 g**

DIN rail length in mm	max fitting length in mm	Mounting plate (thickness in mm)	External mounting brackets	External hinge* set	EMC version	Self-adhesive rubber feet set	Silicone lid seal	Sealable lid screw in steel	
TS15									
150	134	1.5	•	•	•	•	•	•	

Maximum number of cable glands to **DIN 50262\***

M	Corner dim.	Sde		PG	Corner dim.	Sde	
		A/B	C/D			A/B	C/D
12	17.25	16	4	7	17.25	14	4
16	25.30	6	2	9	21.85	8	2
20	27.60	5	1	11	25.30	6	1
25	37.95	3	1	13.5	27.60	5	1
32	48.30			16	31.05	4	1
40	60.95			21	37.95	3	
50	69.00			29	48.30		
63	74.75			36	60.95		
					42	69.00	
					48	74.75	



Type: **. . .08 16 09**

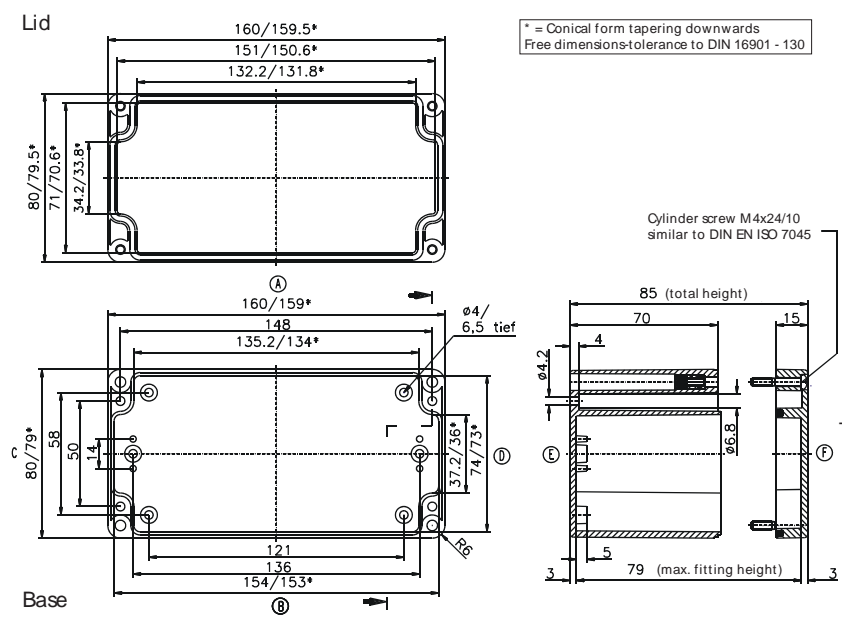
External dimensions: **80 x 160 x 85 mm**

Weight: **295 g**

DIN rail length in mm	max fitting length in mm	Mounting plate (thickness in mm)	External mounting brackets	External hinge* set	EMC version	Self-adhesive rubber feet set	Silicone lid seal	Sealable lid screw in steel	
TS15									
150	134	1.5	•	•	•	•	•	•	

Maximum number of cable glands to **DIN 50262\***

M	Corner dim.	Sde		PG	Corner dim.	Sde	
		A/B	C/D			A/B	C/D
12	17.25	28	6	7	17.25	28	6
16	25.30	14	3	9	21.85	18	4
20	27.60	9	2	11	25.30	12	2
25	37.95	5	1	13.5	27.60	9	2
32	48.30	3	1	16	31.05	8	2
40	60.95	2		21	37.95	5	1
50	69.00	2		29	48.30	3	
63	74.75			36	60.95	2	
					42	69.00	2
					48	74.75	



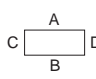
Type: **...08 23 09**

External dimensions: **80 x 230 x 85 mm**

Weight: **338 g**

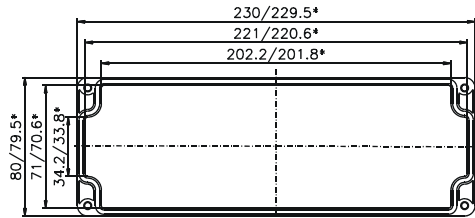
DIN rail length in mm	max. fitting length in mm	Mounting plate (thickness in mm)	External mounting brackets	External hinge* set	EMC version	Self-adhesive rubber feet set	Silicone lid seal	Sealable lid screw in steel
TS15	204	1.5	•	•	•	•	•	•
218	204	1.5	•	•	•	•	•	•

Maximum number of cable glands to **DIN 50262\***

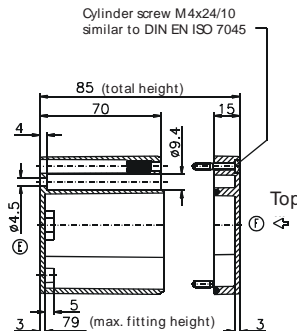
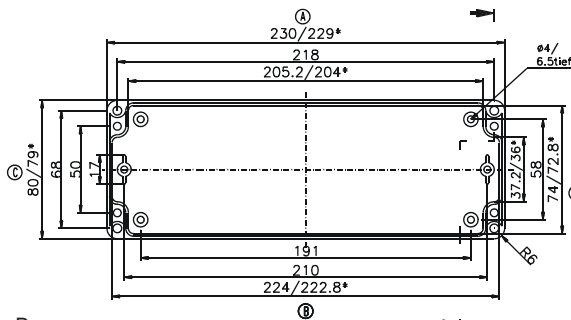


M	Corner dim.	Sde		PG	Corner dim.	Sde	
		A/B	C/D			A/B	C/D
12	17.25	40	6	7	17.25	40	6
16	25.30	18	3	9	21.85	27	3
20	27.60	14	2	11	25.30	17	2
25	37.95	7	1	13.5	27.60	14	2
32	48.30	4	1	16	31.05	12	2
40	60.95	3		21	37.95	7	1
50	69.00			29	48.30	4	
63	74.75			36	60.95	3	
				42	69.00		
				48	74.75		

Lid



\* = Conical form tapering downwards  
Free dimensions-tolerance to DIN 16901 - 130



Base

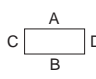
Type: **...12 12 06**

External dimensions: **120 x 122 x 55 mm**

Weight: **240 g**

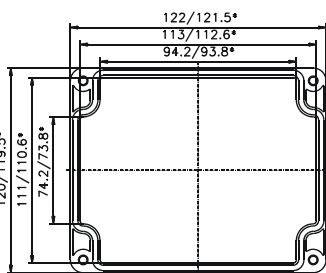
DIN rail length in mm	max. fitting length in mm	Mounting plate (thickness in mm)	External mounting brackets	External hinge* set	EMC version	Self-adhesive rubber feet set	Silicone lid seal	Sealable lid screw in steel
TS35	96	2	•	•	•	•	•	•
110	96	2	•	•	•	•	•	•

Maximum number of cable glands to **DIN 50262\***

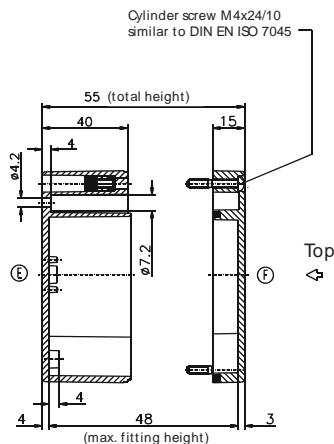
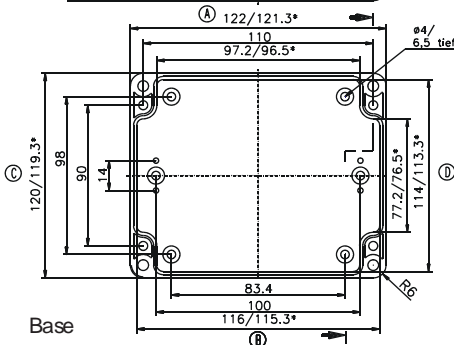


M	Corner dim.	Sde		PG	Corner dim.	Sde	
		A/B	C/D			A/B	C/D
12	17.25	11	8	7	17.25	11	8
16	25.30	4	3	9	21.85	6	4
20	27.60	4	3	11	25.30	4	3
25	37.95	2	2	13.5	27.60	4	3
32	48.30			16	31.05	3	2
40	60.95			21	37.95	2	2
50	69.00			29	48.30		
63	74.75			36	60.95		
				42	69.00		
				48	74.75		

Lid



\* = Conical form tapering downwards  
Free dimensions-tolerance to DIN 16901 - 130



Base

Type: **...12 12 09**

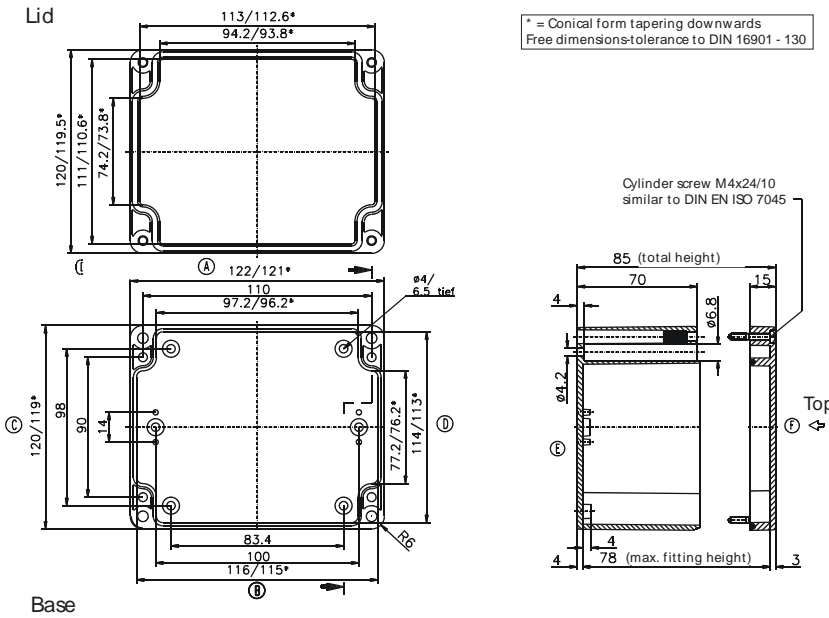
External dimensions: **120 x 122 x 85 mm**

Weight: **300 g**

DIN rail length in mm	max. fitting length in mm	Mounting plate (thickness in mm)	External mounting brackets	External hinge* set	EMC version	Self-adhesive rubber feet set	Silicone lid seal	Sealable lid screw in steel
TS35								
110	96	2	•	•	•	•	•	•

Maximum number of cable glands to **DIN 50262\***

M	Corner dim.	Sde		PG	Corner dim.	Sde	
		A/B	C/D			A/B	C/D
12	17.25	20	14	7	17.25	20	14
16	25.30	9	6	9	21.85	12	9
20	27.60	6	5	11	25.30	9	6
25	37.95	4	2	13.5	27.60	6	5
32	48.30	2	1	16	31.05	6	4
40	60.95	1	1	21	37.95	3	2
50	69.00	1		29	48.30	2	1
63	74.75			36	60.95	1	1
				42	69.00		
				48	74.75		



Type: **...12 12 11**

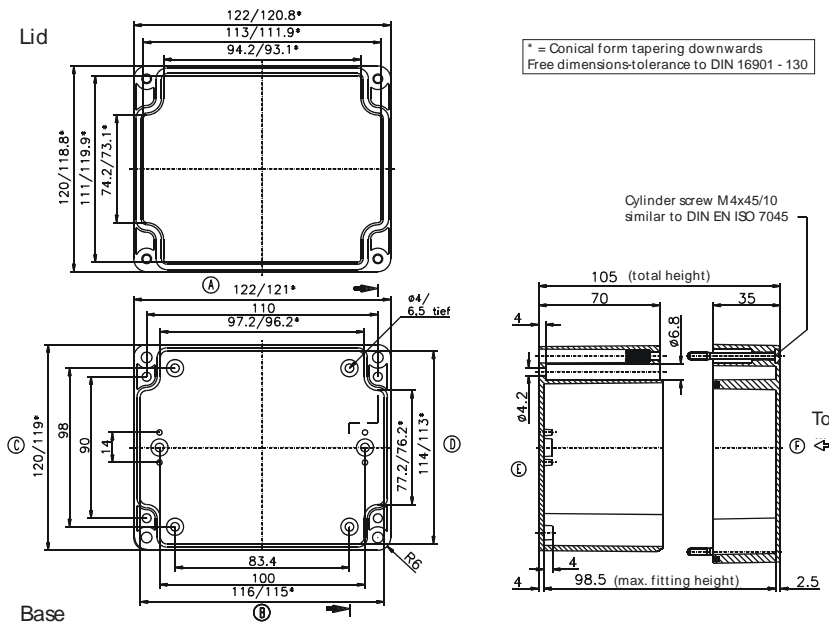
External dimensions: **120 x 122 x 105 mm**

Weight: **350 g**

DIN rail length in mm	max. fitting length in mm	Mounting plate (thickness in mm)	External mounting brackets	External hinge* set	EMC version	Self-adhesive rubber feet set	Silicone lid seal	Sealable lid screw in steel
TS35								
110	96	2	•	•	•	•	•	•

Maximum number of cable glands to **DIN 50262\***

M	Corner dim.	Sde		PG	Corner dim.	Sde	
		A/B	C/D			A/B	C/D
12	17.25	20	14	7	17.25	20	14
16	25.30	9	6	9	21.85	12	9
20	27.60	6	5	11	25.30	9	6
25	37.95	4	2	13.5	27.60	6	5
32	48.30	2	1	16	31.05	6	4
40	60.95	1	1	21	37.95	3	2
50	69.00	1		29	48.30	2	1
63	74.75			36	60.95	1	1
				42	69.00		
				48	74.75		



Type: **...12 16 09**

External dimensions: **120 x 160 x 90 mm**

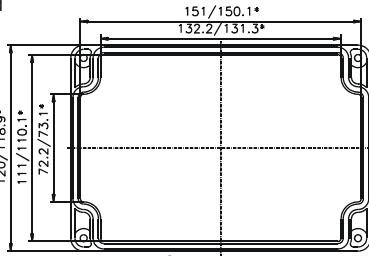
Weight: **400 g**

DIN rail length in mm	max. fitting length in mm	Mounting plate (thickness in mm)	External mounting brackets	External hinge* set	EMC version	Self-adhesive rubber feet set	Silicone lid seal	Sealable lid screw in steel
TS35								
150	134	2	•	•	•	•	•	

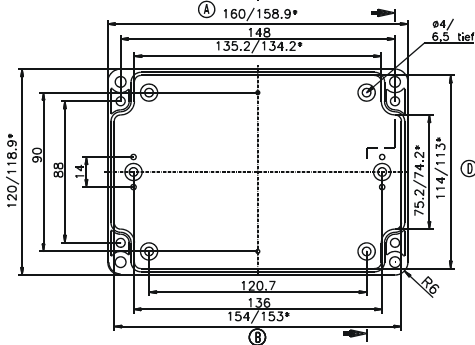
Maximum number of cable glands to **DIN 50262\***

M	Corner dim.	Sde		PG	Corner dim.	Sde	
		A/B	C/D			A/B	C/D
12	17.25	21	12	7	17.25	21	12
16	25.30	10	6	9	21.85	12	6
20	27.60	9	4	11	25.30	10	6
25	37.95	4	2	13.5	27.60	9	4
32	48.30	3	1	16	31.05	5	3
40	60.95			21	37.95	3	2
50	69.00			29	48.30	2	1
63	74.75			36	60.95		
				42	69.00		
				48	74.75		

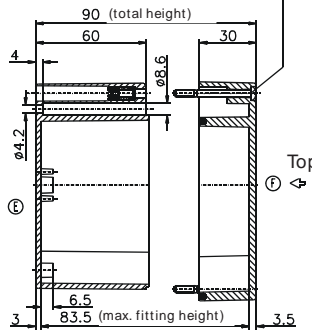
Lid



\* = Conical form tapering downwards  
Free dimensions-tolerance to DIN 16901 - 130



Cylinder screw M4x37/10 similar to DIN EN ISO 7045



Base

Type: **...12 16 14**

External dimensions: **120 x 160 x 140 mm**

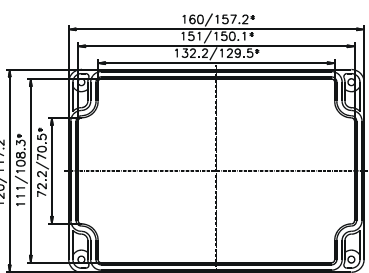
Weight: **600 g**

DIN rail length in mm	max. fitting length in mm	Mounting plate (thickness in mm)	External mounting brackets	External hinge* set	EMC version	Self-adhesive rubber feet set	Silicone lid seal	Sealable lid screw in steel
TS35								
150	134	2	•	•	•	•	•	

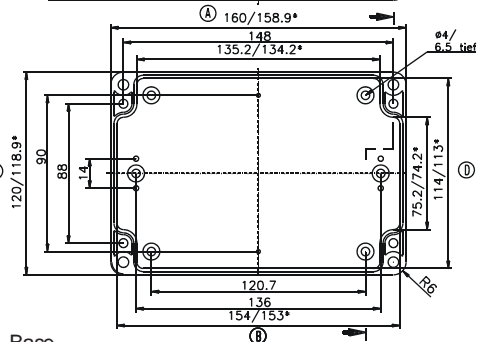
Maximum number of cable glands to **DIN 50262\***

M	Corner dim.	Sde		PG	Corner dim.	Sde	
		A/B	C/D			A/B	C/D
12	17.25	21	12	7	17.25	21	12
16	25.30	10	6	9	21.85	12	6
20	27.60	9	4	11	25.30	10	6
25	37.95	4	2	13.5	27.60	9	4
32	48.30	3	1	16	31.05	5	3
40	60.95			21	37.95	3	2
50	69.00			29	48.30	2	1
63	74.75			36	60.95		
				42	69.00		
				48	74.75		

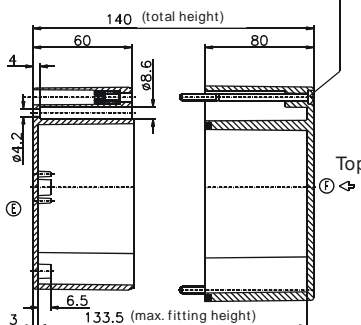
Lid



\* = Conical form tapering downwards  
Free dimensions-tolerance to DIN 16901 - 130



Cylinder screw M4x90/22 similar to DIN EN ISO 7045



Base

Type: **...12 20 08**

External dimensions: **120 x 200 x 75 mm**

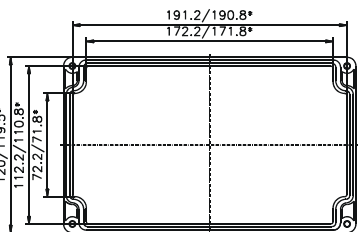
Weight: **400 g**

DIN rail length in mm	max. fitting length in mm	Mounting plate (thickness in mm)	External mounting brackets	External hinge* set	EMC version	Self-adhesive rubber feet set	Silicone lid seal	Sealable lid screw in steel	
TS35									
190	174	2	•	•	•	•	•	•	

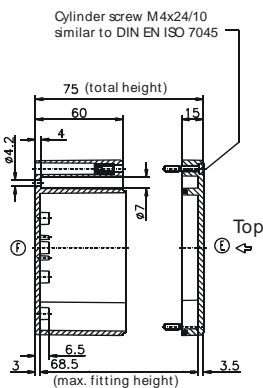
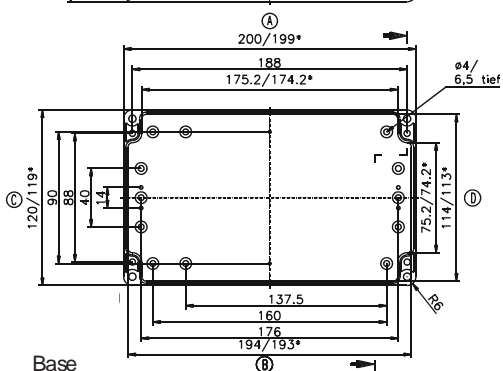
Maximum number of cable glands to **DIN 50262\***

M	Corner dim.	Sde		PG	Corner dim.	Sde	
		A/B	C/D			A/B	C/D
12	17.25	30	15	7	17.25	30	15
16	25.30	14	6	9	21.85	20	9
20	27.60	12	6	11	25.30	12	6
25	37.95	5	3	13.5	27.60	12	6
32	48.30	3	2	16	31.05	10	4
40	60.95			21	37.95	5	2
50	69.00			29	48.30	3	2
63	74.75			36	60.95		
				42	69.00		
				48	74.75		

Lid



\* = Conical form tapering downwards  
Free dimensions-tolerance to DIN 16901 - 130



Base

Type: **...12 20 09**

External dimensions: **120 x 200 x 90 mm**

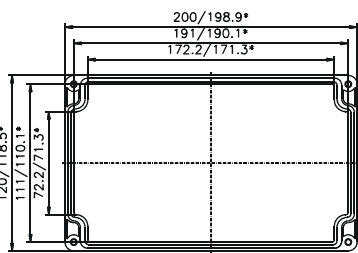
Weight: **475 g**

DIN rail length in mm	max. fitting length in mm	Mounting plate (thickness in mm)	External mounting brackets	External hinge* set	EMC version	Self-adhesive rubber feet set	Silicone lid seal	Sealable lid screw in steel	
TS35									
190	174	2	•	•	•	•	•	•	

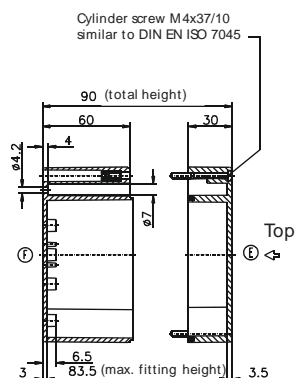
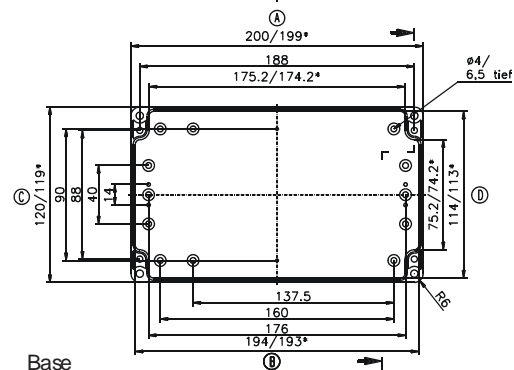
Maximum number of cable glands to **DIN 50262\***

M	Corner dim.	Sde		PG	Corner dim.	Sde	
		A/B	C/D			A/B	C/D
12	17.25	30	12	7	17.25	30	11
16	25.30	14	6	9	21.85	18	6
20	27.60	12	4	11	25.30	12	6
25	37.95	5	2	13.5	27.60	12	4
32	48.30	3	1	16	31.05	10	3
40	60.95			21	37.95	5	2
50	69.00			29	48.30	3	1
63	74.75			36	60.95		
				42	69.00		
				48	74.75		

Lid



\* = Conical form tapering downwards  
Free dimensions-tolerance to DIN 16901 - 130



Base

Type: **...12 24 10**

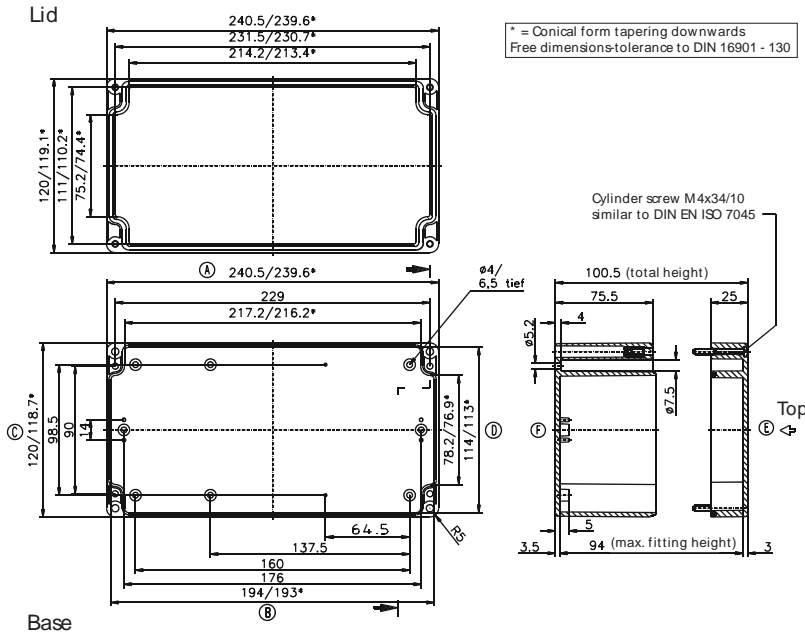
External dimensions: **120 x 240 x 100 mm**

Weight: **520 g**

DIN rail length in mm	max. fitting length in mm	Mounting plate (thickness in mm)	External mounting brackets	External hinge* set	EMC version	Self-adhesive rubber feet set	Silicone lid seal	Sealable lid screw in steel
TS35								
230	216	2	•	•	•	•	•	

Maximum number of cable glands to **DIN 50262\***

M	Corner dim.	Sde		PG	Corner dim.	Sde	
		A/B	C/D			A/B	C/D
12	17.25	48	16	7	17.25	48	16
16	25.30	24	8	9	21.85	30	9
20	27.60	17	5	11	25.30	21	6
25	37.95	10	3	13.5	27.60	17	5
32	48.30	5	1	16	31.05	14	5
40	60.95	3	1	21	37.95	9	3
50	69.00	3	1	29	48.30	5	1
63	74.75			36	60.95	3	1
				42	69.00	3	1
				48	74.75		



Type: **...15 20 08**

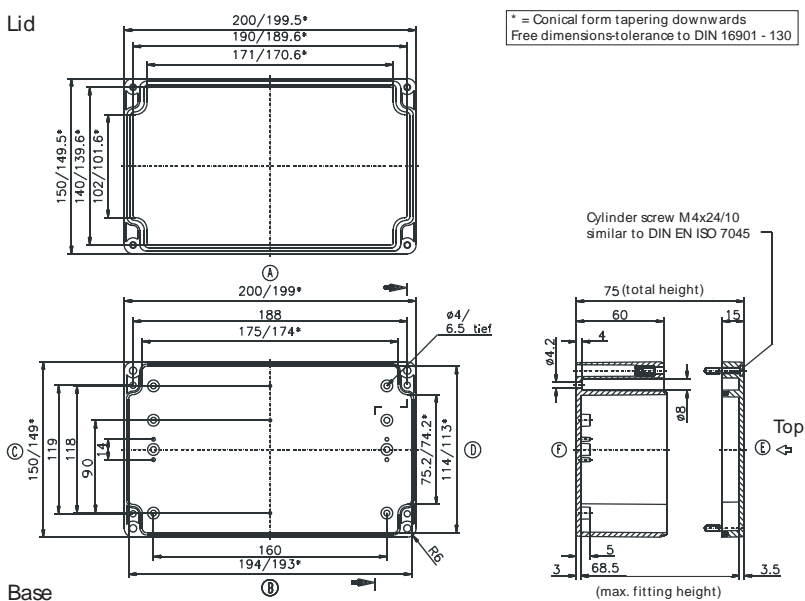
External dimensions: **150 x 200 x 75 mm**

Weight: **525 g**

DIN rail length in mm	max. fitting length in mm	Mounting plate (thickness in mm)	External mounting brackets	External hinge* set	EMC version	Self-adhesive rubber feet set	Silicone lid seal	Sealable lid screw in steel
TS35								
170	174	2	•	•	•	•	•	

Maximum number of cable glands to **DIN 50262\***

M	Corner dim.	Sde		PG	Corner dim.	Sde	
		A/B	C/D			A/B	C/D
12	17.25	30	17	7	17.25	30	17
16	25.30	14	8	9	21.85	20	9
20	27.60	12	6	11	25.30	14	8
25	37.95	5	3	13.5	27.60	12	6
32	48.30	3	2	16	31.05	10	4
40	60.95			21	37.95	5	3
50	69.00			29	48.30	3	2
63	74.75			36	60.95		
				42	69.00		
				48	74.75		



Type: **...16 24 09**

External dimensions: **160 x 240 x 90 mm**

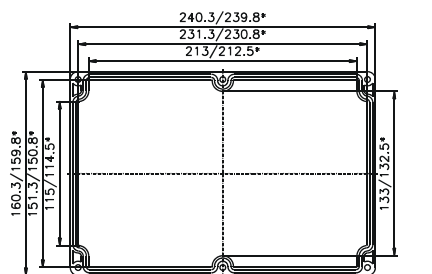
Weight: **650 g**

DIN rail length in mm	max. fitting length in mm	Mounting plate (thickness in mm)	External mounting brackets	External hinge* set	EMC version	Self-adhesive rubber feet set	Silicone lid seal	Sealable lid screw in steel
TS35								
230	214	2.5	•	•	•	•	•	•

Maximum number of cable glands to **DIN 50262\***

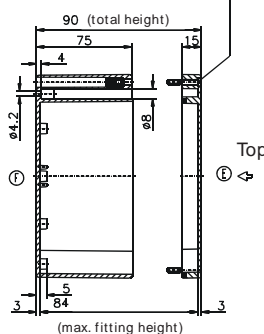
M	Corner dim.	Sde		PG	Corner dim.	Sde	
		A/B	C/D			A/B	C/D
12	17.25	40	26	7	17.25	40	26
16	25.30	18	11	9	21.85	24	15
20	27.60	12	8	11	25.30	16	11
25	37.95	8	4	13.5	27.60	12	8
32	48.30	4	2	16	31.05	12	8
40	60.95	2	2	21	37.95	6	4
50	69.00	2	1	29	48.30	4	2
63	74.75			36	60.95	2	2
				42	69.00	2	1
				48	74.75		

Lid

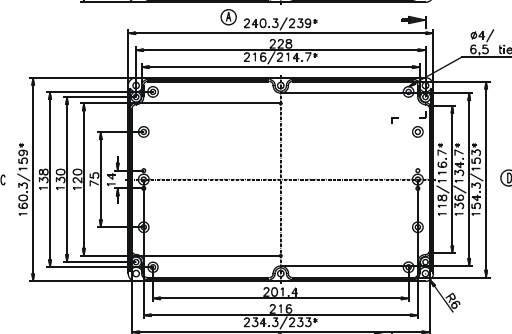


\* = Conical form tapering downwards  
Free dimensions-tolerance to DIN 16901 - 130

Cylinder screw M4x24/10 similar to DIN EN ISO 7045



Base



Type: **...16 24 12**

External dimensions: **160 x 240 x 120 mm**

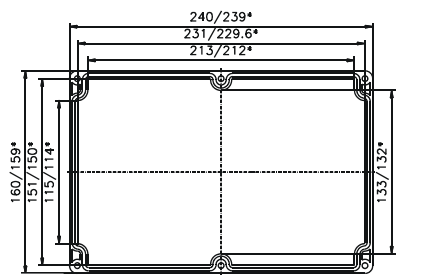
Weight: **795 g**

DIN rail length in mm	max. fitting length in mm	Mounting plate (thickness in mm)	External mounting brackets	External hinge* set	EMC version	Self-adhesive rubber feet set	Silicone lid seal	Sealable lid screw in steel
TS35								
230	214	2.5	•	•	•	•	•	•

Maximum number of cable glands to **DIN 50262\***

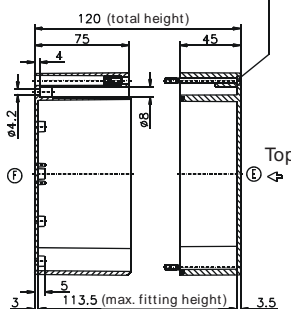
M	Corner dim.	Sde		PG	Corner dim.	Sde	
		A/B	C/D			A/B	C/D
12	17.25	40	26	7	17.25	40	26
16	25.30	22	12	9	21.85	24	15
20	27.60	16	9	11	25.30	18	12
25	37.95	8	5	13.5	27.60	16	9
32	48.30	4	3	16	31.05	12	8
40	60.95	2	2	21	37.95	8	5
50	69.00	2	1	29	48.30	4	2
63	74.75			36	60.95	2	2
				42	69.00	2	1
				48	74.75		

Lid

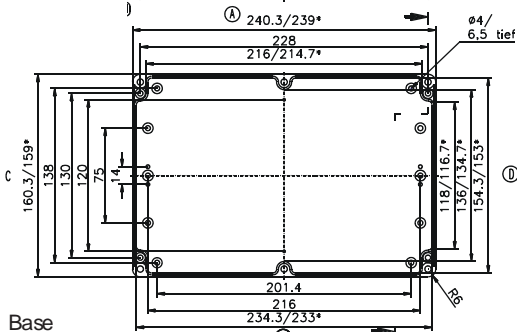


\* = Conical form tapering downwards  
Free dimensions-tolerance to DIN 16901 - 130

Cylinder screw M4x55/10 similar to DIN EN ISO 7045



Base





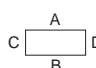
Type: **...16 36 10**

External dimensions: **160 x 360 x 100 mm**

Weight: **985 g**

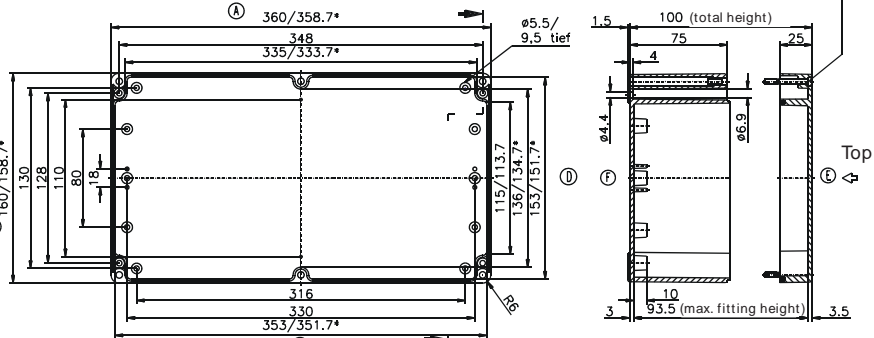
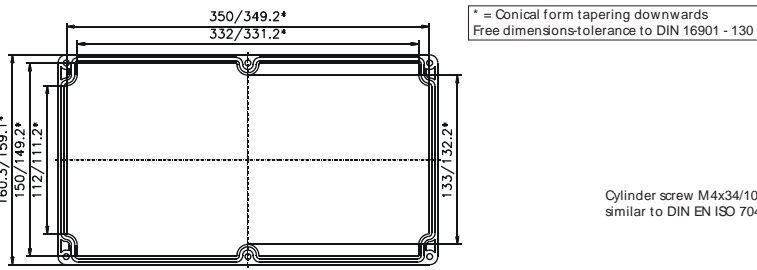
DIN rail length in mm	max. fitting length in mm	Mounting plate (thickness in mm)	External mounting brackets	External hinge* set	EMC version	Self-adhesive rubber feet set	Silicone lid seal	Sealable lid screw in steel
TS35	345	333	2.5	•	•	•	•	•

Maximum number of cable glands to **DIN 50262\***



M	Corner dim.	Sde		PG	Corner dim.	Sde	
		A/B	C/D			A/B	C/D
12	17.25	72	24	7	17.25	72	24
16	25.30	36	12	9	21.85	44	15
20	27.60	28	9	11	25.30	36	11
25	37.95	16	5	13.5	27.60	28	9
32	48.30	8	2	16	31.05	20	6
40	60.95	4	2	21	37.95	16	5
50	69.00	4	1	29	48.30	6	2
63	74.75	4		36	60.95	4	2
				42	69.00	4	1
				48	74.75	4	

Lid



Base

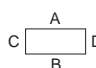
Type: **...20 36 15**

External dimensions: **200 x 360 x 150 mm**

Weight: **1550 g**

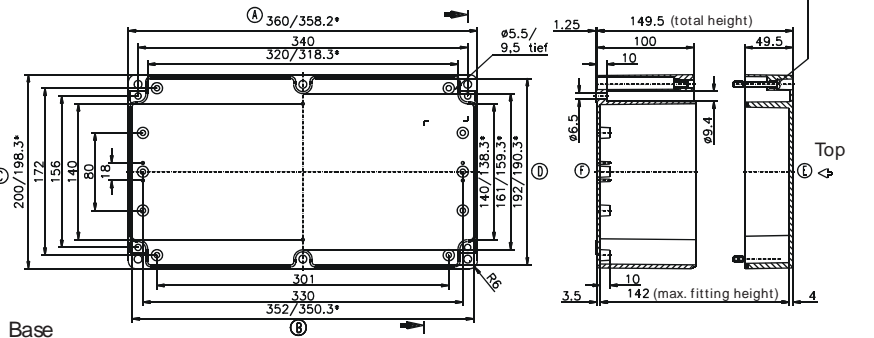
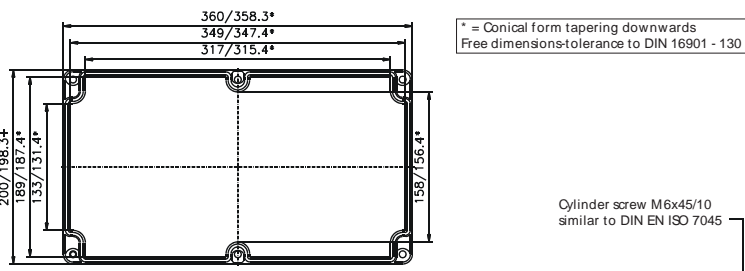
DIN rail length in mm	max. fitting length in mm	Mounting plate (thickness in mm)	External mounting brackets	External hinge* set	EMC version	Self-adhesive rubber feet set	Silicone lid seal	Sealable lid screw in steel
TS35	345	333	2.5	•	•	•	•	•

Maximum number of cable glands to **DIN 50262\***



M	Corner dim.	Sde		PG	Corner dim.	Sde	
		A/B	C/D			A/B	C/D
12	17.25	96	35	7	17.25	96	35
16	25.30	44	18	9	21.85	56	24
20	27.60	32	15	11	25.30	44	16
25	37.95	18	6	13.5	27.60	32	15
32	48.30	12	5	16	31.05	30	12
40	60.95	6	2	21	37.95	16	6
50	69.00	4	2	29	48.30	12	4
63	74.75	4	1	36	60.95	6	2
				42	69.00	4	2
				48	74.75	4	1

Lid



Base

Type: **...23 30 09**

External dimensions: **230 x 300 x 85 mm**

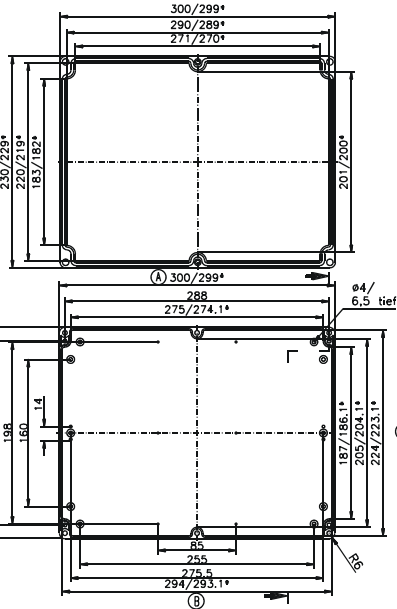
Weight: **915 g**

DIN rail length in mm	max. fitting length in mm	Mounting plate (thickness in mm)	External mounting brackets	External hinge* set	EMC version	Self-adhesive rubber feet set	Silicone lid seal	Sealable lid screw in steel	
TS35									
290	274	2	•	•	•	•	•		

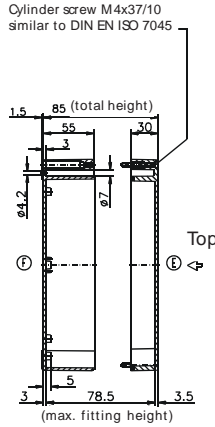
Maximum number of cable glands to **DIN 50262\***

M	Corner dim.	Sde		PG	Corner dim.	Sde	
		A/B	C/D			A/B	C/D
12	17.25	42	26	7	17.25	42	26
16	25.30	20	14	9	21.85	24	16
20	27.60	16	9	11	25.30	20	12
25	37.95	6	5	13.5	27.60	16	9
32	48.30	4	4	16	31.05	12	7
40	60.95			21	37.95	6	5
50	69.00			29	48.30	4	3
63	74.75			36	60.95		
				42	69.00		
				48	74.75		

Lid



\* = Conical form tapering downwards  
Free dimensions-tolerance to DIN 16901 - 130



Base

Type: **...23 30 11**

External dimensions: **230 x 300 x 110 mm**

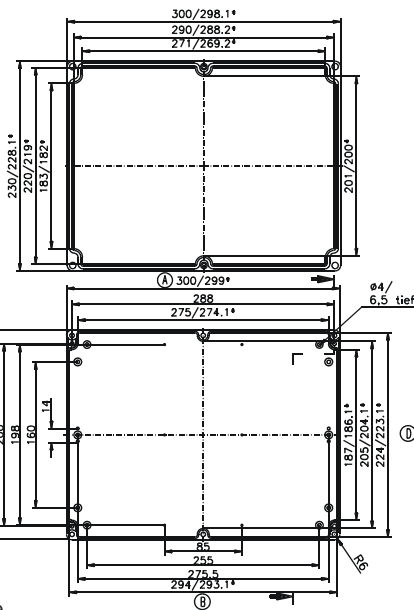
Weight: **1155 g**

DIN rail length in mm	max. fitting length in mm	Mounting plate (thickness in mm)	External mounting brackets	External hinge* set	EMC version	Self-adhesive rubber feet set	Silicone lid seal	Sealable lid screw in steel	
TS35									
290	274	2	•	•	•	•	•		

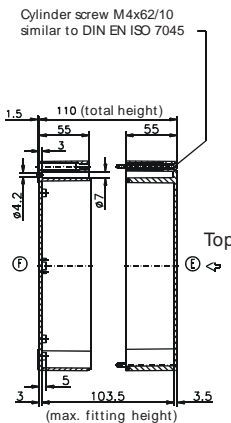
Maximum number of cable glands to **DIN 50262\***

M	Corner dim.	Sde		PG	Corner dim.	Sde	
		A/B	C/D			A/B	C/D
12	17.25	42	26	7	17.25	42	26
16	25.30	20	14	9	21.85	24	16
20	27.60	16	9	11	25.30	20	12
25	37.95	6	5	13.5	27.60	16	9
32	48.30	4	4	16	31.05	10	7
40	60.95			21	37.95	6	5
50	69.00			29	48.30	4	3
63	74.75			36	60.95		
				42	69.00		
				48	74.75		

Lid



\* = Conical form tapering downwards  
Free dimensions-tolerance to DIN 16901 - 130



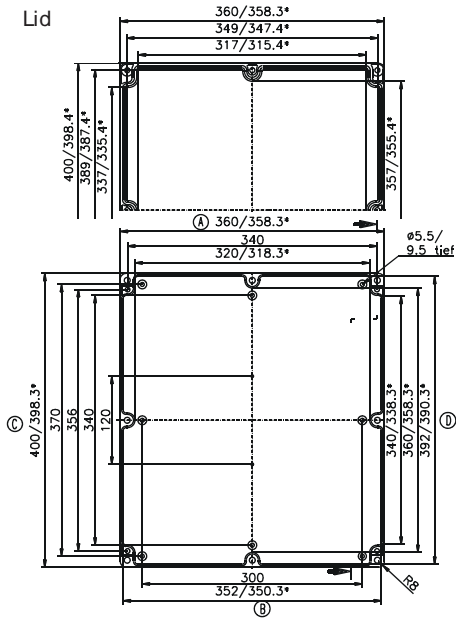
Base

DIN rail length in mm	max. fitting length in mm	Mounting plate (thickness in mm)	External mounting brackets	External hinge* set	EMC version	Self-adhesive rubber feet set	Silicone lid seal	Sealable lid screw in steel	
TS35	300	2	•	•	•		•		

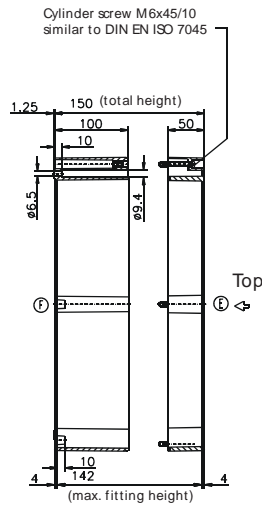
Maximum number of cable glands to **DIN 50262\***

M	Corner dim.	Side		PG	Corner dim.	Side	
		A/B	C/D			A/B	C/D
12	17.25	102	108	7	17.25	96	102
16	25.30	48	48	9	21.85	66	66
20	27.60	40	40	11	25.30	44	48
25	37.95	18	22	13,5	27.60	36	40
32	48.30	12	12	16	31.05	30	30
40	60.95	6	6	21	37.95	18	18
50	69.00	4	4	29	48.30	12	12
63	74.75	4	4	36	60.95	6	6
				42	69.00	4	4
				48	74.75	4	4

Lid



\* = Conical form tapering downwards  
Free dimensions-tolerance to DIN 16901 - 130



Base