

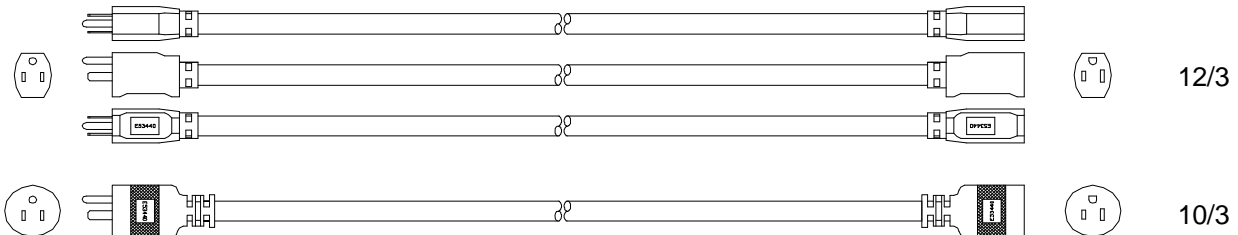


PRODUCT SPECIFICATION

CATALOG NUMBER: See table below
DESCRIPTION: Stripes™ SJTW extension cord with power indicator light in the cord connector
APPROVALS: UL Listed and CSA Certified, or UL/CUL Listed, Outdoor Use Cord Set

CONSTRUCTION PARAMETERS:

Conductor: See table below
 Cable jacket material: PVC
 Overall cable O.D. (nom): See table below
 Cord rating: Hard Usage per the National Electrical Code
 Cable legend type: Indent print



Note: Plug and cord connector style may vary

Attachment plug configuration: NEMA 5-15P
 Cord connector configuration: NEMA 5-15R
 Plug and connector material: Clear PVC, with neon power indicator lamp in the cord connector

ELECTRICAL AND ENVIRONMENTAL PROPERTIES:

Cable temperature rating: -40 to +60 °C
 Nominal operating voltage: 125 VAC
 Maximum operating current: 15 A

Catalog no.	Gauge	Length	Conductor	Cable O.D.
02547	12/3	25 ft	65/30 BC	0.420 in
02548		50 ft		
02549		100 ft		
02648	10/3	50 ft	104/30 BC	0.567 in
02649		100 ft		

The information presented here is, to the best of our knowledge, true and accurate. However, since conditions of use are beyond our control, all recommendations or suggestions are presented without guarantee or responsibility on our part. We disclaim all liability in connection with the use of information contained herein or otherwise.

This specification is proprietary intellectual property of Coleman Cable Inc. Any information contained herein shall not be disclosed to any party without written consent of Coleman Cable Inc.