

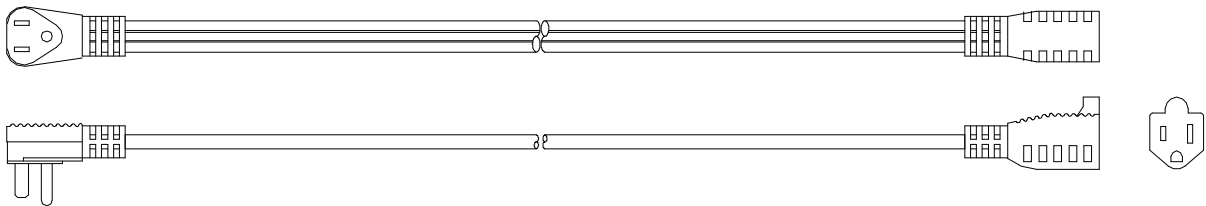


PRODUCT SPECIFICATION

CATALOG NUMBER: See table below
DESCRIPTION: Major appliance SPT-3 extension cord
APPROVALS: UL Listed general use cord set

CONSTRUCTION PARAMETERS:

Cord type: SPT-3
 Cord length: See table below
 Conductor: Stranded bare copper, see table below for gauge
 Jacket material: PVC
 Cord rating per the NEC: Not hard usage



NEMA 5-15 shown, plug style may vary

Attachment plug configuration: Right angle, see table below for NEMA configuration
 Cord connector configuration: Straight, see table below for NEMA configuration
 Plug and connector material: PVC
 Plug and connector color: Matches cord

ELECTRICAL PROPERTIES:

Cable temperature rating: -20 to +60 °C
 Nominal operating voltage: See table below
 Maximum operating current: See table below

CATALOG NUMBERS

Catalog number	Gauge	Length	Color	NEMA configuration	Voltage (nom)	Current (max)
03531	14/3	3 ft	Beige	5-15	125V	15A
03532		6 ft				
03533		9 ft				
03535		12 ft				
03536		15 ft				
03537	12/3	9 ft	Gray	6-20	250V	20A
03538	14/3	9 ft	Gray	6-15	250V	15A

The information presented here is, to the best of our knowledge, true and accurate. However, since conditions of use are beyond our control, all recommendations or suggestions are presented without guarantee or responsibility on our part. We disclaim all liability in connection with the use of information contained herein or otherwise.

This specification is proprietary intellectual property of Coleman Cable Inc. Any information contained herein shall not be disclosed to any party without written consent of Coleman Cable Inc.