

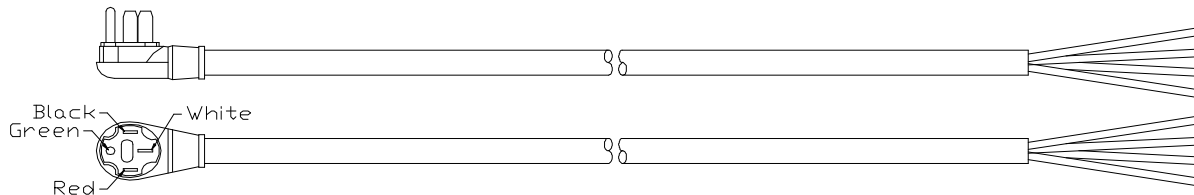


## PRODUCT SPECIFICATION

**CATALOG NUMBER:** See table below  
**DESCRIPTION:** 6/3 & 8/1 STW, 125/250V 50A RV power supply cords  
**APPROVALS:** UL/CUL Listed RV power supply cords

### CONSTRUCTION PARAMETERS:

Conductors: (3) 6 AWG (7x38/30) bare copper and  
(1) 8 AWG (7x24/30) bare copper  
Conductor O.D. (nom): 0.185" (6 ga), 0.153" (8 ga)  
Insulation material: PVC  
Insulation O.D. (nom) 0.326" (6 ga), 0.277" (8 ga)  
Conductor color code: Black White Red (6 ga), Green (8 ga)  
Jacket material: PVC  
Overall cable O.D. (nom): 1.049"  
Temperature rating: -40 to +60 deg C



*Note: Plug style may vary*

Plug configuration: NEMA 14-50P  
Electrical ratings: 125/250 VAC 50A  
Plug material: PVC  
Removal of jacket (nom): 7"  
Conductor strip: None

### CATALOG NUMBERS:

Length	Catalog number
25 ft	09527*
30 ft	09530
36 ft	09536
50 ft	09567

\* - UL listed for OEM sale

The information presented here is, to the best of our knowledge, true and accurate. However, since conditions of use are beyond our control, all recommendations or suggestions are presented without guarantee or responsibility on our part. We disclaim all liability in connection with the use of information contained herein or otherwise.

This specification is proprietary intellectual property of Coleman Cable Inc. Any information contained herein shall not be disclosed to any party without the written consent of Coleman Cable Inc.