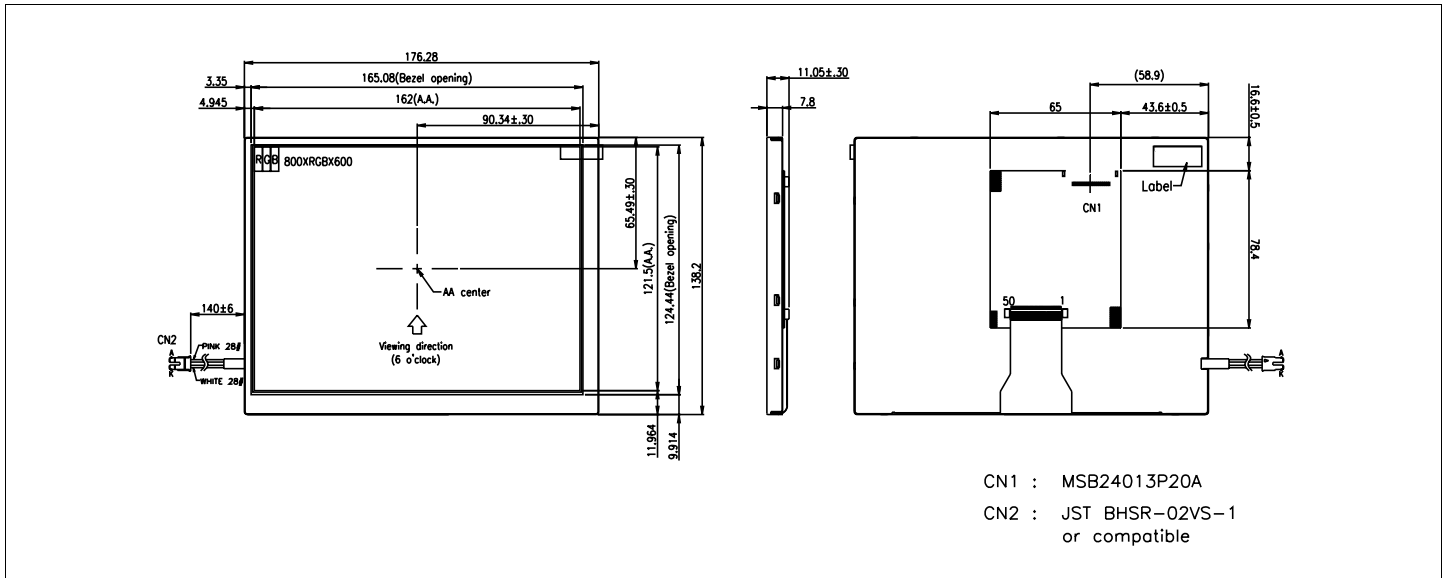


HDA800S-GHL

Dimensional Drawing

8", SVGA (800 X600) , TFT Color Graphics ,White LED Backlight



Features

Viewing Angle(H/V).....140/125 degrees
 High Contrast.....500:1
 Fast Response Time(R/F).....25 msec
 Built-in Controller.....none
 LVDS Interface Logic.....
 Touch Screenoptional
 High Brightness1300 cd/m

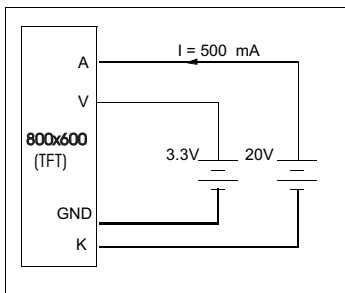
Physical Data

Module Size.....176.28W x138.2H x7.8T mm
 Viewing Area Size.....165.08 W x124.44 H mm
 Dot Pitch.....0.2025W x 0.2025H mm
 Weight.....TBD

Electrical Characteristics (VCC=3.3±0.125V 25°C)

PARAMETER	SYM	CONDITION	MIN	TYP	MAX	UNIT
OPERATING VOLTAGE	V _{CC}	-	3.0	3.3	3.6	V
OPERATING VOLTAGE(WLED)	V _{WLED}	-	16	20	24	V
INPUT DIF. VOLTAGE (LVDS)	V _{ID}	-	100	-	-	mV
INPUT COM. MODE VOLT.	V _{CM}	-	-	-	1.40	V
OPERATING CURRENT	I _{CC}	V _{CC} = 3.3V	-	220	TBD	mA
OPERATING CURRENT (WLED)	I _{WLED}	-	-	500	-	mA
POWER CONSUMPTION	P	-	-	10.73	-	W
BRIGHTNESS	L	-	1000	1300	-	cd/m ²

Power Supply



Pin Connections

PIN NO.	SYMBOL		FUNCTION
1	VCC	-	+3.3V Power Supply
2	VCC	-	+3.3V Power Supply
3	GND	-	Ground
4	GND	-	Ground
5	RXIN0 -	H/L	LVDS (-) - channel 0
6	RXIN0+	H/L	LVDS (+) - channel 0
7	GND	-	Ground
8	RXIN1 -	H/L	LVDS (-) - channel 1
9	RXIN1 +	H/L	LVDS (+) - channel 1
10	GND	-	Ground
11	RXIN2 -	H/L	LVDS (-) - channel 2
12	RXIN2+	H/L	LVDS (+) - channel 2
13	GND	-	Ground
14	CLK -	H/L	LVDS (-) - clock
15	CLK+	H/L	LVDS (+) - clock
16	GND	-	Ground
17	NC	-	No Connection
18	NC	-	No Connection
19	GND	-	Ground
20	GND	-	Ground

Absolute Maximum Ratings

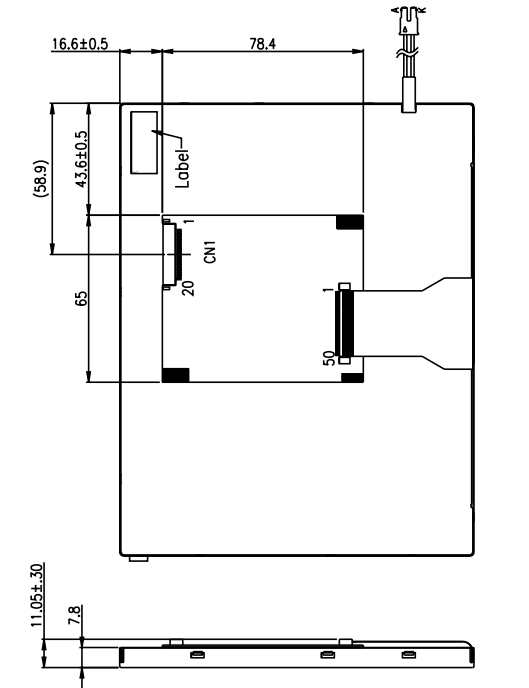
PARAMETER	SYMBOL	MIN	MAX	UNIT
SUPPLY VOLTAGE	V _{CC}	-0.5	4.0	V
INPUT VOLTAGE	V _{IN}	-0.5	4.0	V
OPERATING TEMPERATURE	T _{OP}	-20	+70	°C
STORAGE TEMPERATURE	T _{STG}	-30	+80	°C

HDA800S-GHL

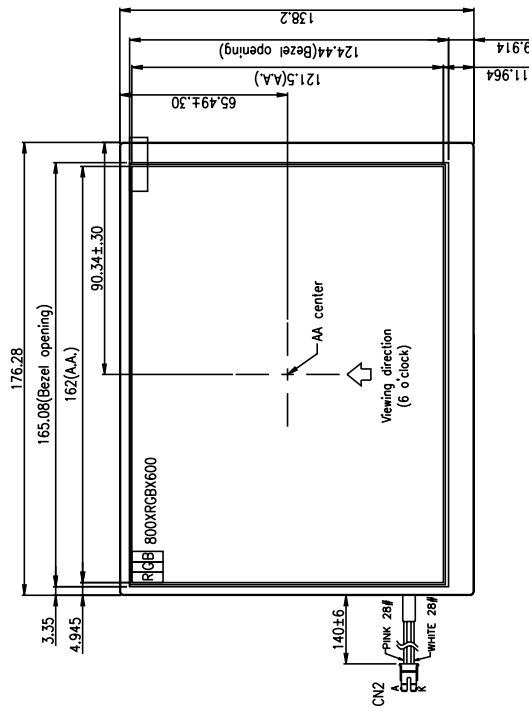
Dimensional Drawing

8", SVGA (800 X600) , TFT Color Graphics ,White LED Backlight

Dimensional Outlines



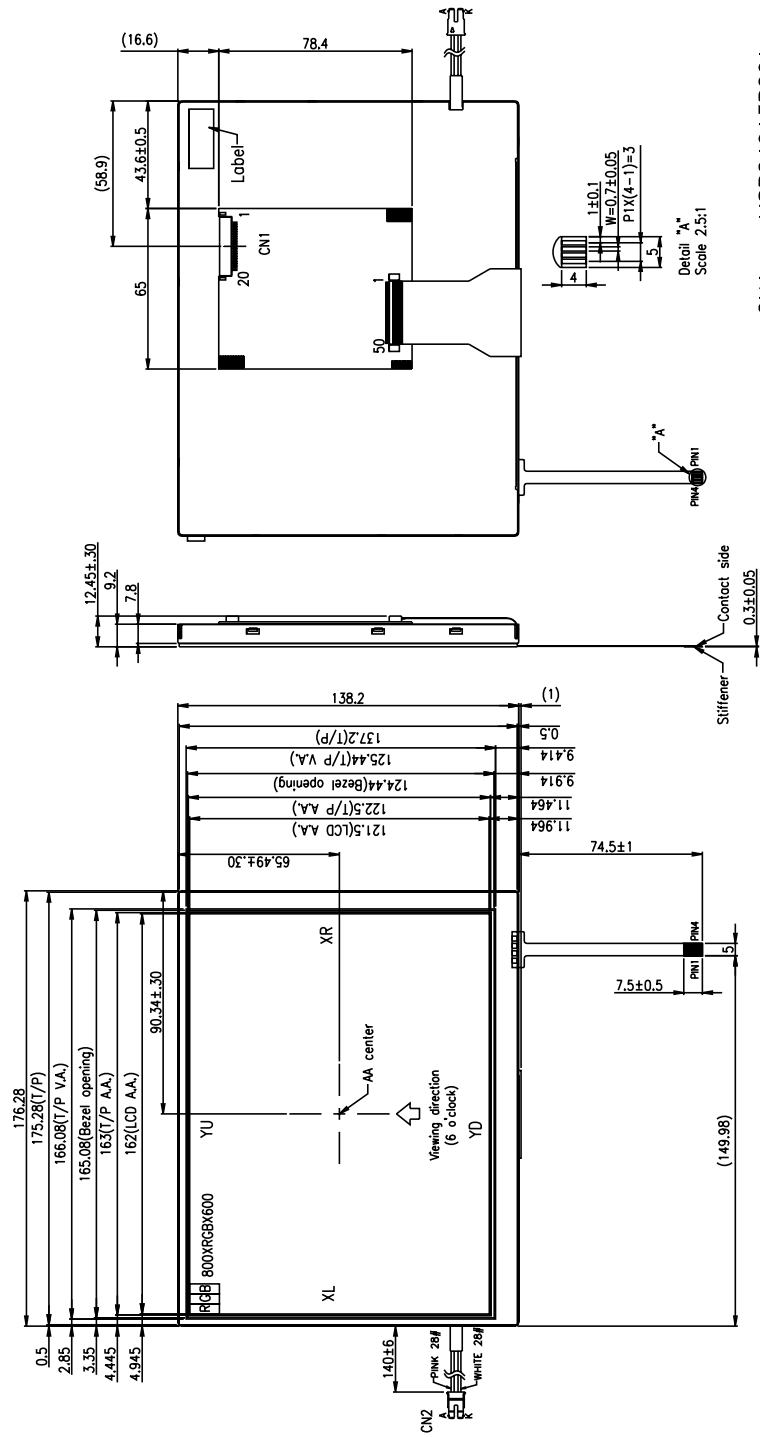
CN1 : MSB24013P20A
 CN2 : JST BHSR-02VS--1
 or compatible



No.	Pin Name
1	VCC
2	VCC
3	GND
4	GND
5	RXIN-
6	RXIN+
7	GND
8	RXIN1-
9	RXIN1+
10	GND
11	RXIN2-
12	RXIN2+
13	GND
14	CXIN-
15	CXIN+
16	GND
17	NC
18	NC
19	GND
20	GND

With TOUCH SCREEN
High Brightness option.

Dimensional Outlines



No.	PIN NAME
1	VCC
2	VCC
3	GND
4	GND
5	RXIN0-
6	RXIN0+
7	GND
8	RXIN1-
9	RXIN1+
10	GND
11	RXIN2-
12	RXIN2+
13	GND
14	CXIN-
15	CXIN+
16	GND
17	NC
18	NC
19	GND
20	GND

CN1 : MSB24013P20A
CN2 : JST BHSR-02VS-1
or compatible

TSP PIN ASSIGNMENT	PIN NO.	DESIGNATION
	1	XL
	2	YD
	3	XR
	4	YU