

Miniature Intermediate Power Relay QY



- 10A switching capability
- 1.5kV dielectric strength (between coil and contacts)
- Plug-in, PCB or Flange mountable
- Different sockets available
- Class A insulation system
- Conform to the CE low voltage directive
- Outline dimensions: 28.0 x 21.5 x 35.0 mm



Options and Ordering Codes

QY	2	1	XX	F	24DC
Contact arrangement					
2 Pole CO	2				Coil voltage
Termination				F	Flange mounting
Plug-in		1			
PCB		2			
			XX		No indication
			XN		with LED

Contact Data

Contact arrangement	2C
Contact resistance	100mΩ (at 1A 6VDC)
Contact material	AgCe
Contact Rating	10A 250VAC/30 VDC
Max. switching voltage	250VAC/30 VDC
Max. switching current	10A
Max. switching power	2500 VA / 300 W
Mechanical Life	1x10 ⁷ OPS
Electrical Life	1x10 ⁵ OPS

Characteristics

Initial Insulation Resistance	500MΩ (at 500VDC)	
Dielectric Strength	Between coil & contacts	1500VAC 1min.
	Between open contacts	1000VAC 1min.
	Between contact sets	1500VAC 1min.
Operate time (at nomi. Volt)	25 ms max.	
Release time (at nomi. Volt)	25 ms max.	
Shock resistance	Functional	98m/s ²
	Destructive	980m/s ²
Vibration resistance	10 to 55Hz 1mm DA	
Ambient temperature	-40°C to +70°C	
Humidity	5% - 85% RH	
Termination	PCB, Plug-in	
Unit Weight	Approx 37g	
Construction	Dust protected	

Coil Data

at 23°C

Nominal Voltage VDC	Pick-up Voltage VDC	Drop-out Voltage VDC	Max. Allowable Voltage VDC	Coil Resistance Ω
5	4	0.5	5.5	27.5 (1 ± 10%)
6	4.8	0.6	6.6	40 (1 ± 10%)
12	9.6	1.2	13.2	160 (1 ± 10%)
24	19.2	2.4	26.4	650 (1 ± 10%)
48	38.4	4.8	52.8	2600 (1 ± 10%)
110	88	11	121	11000 (1 ± 10%)

Nominal Voltage VAC	Pick-up Voltage VAC	Drop-out Voltage VAC	Max. Allowable Voltage VAC	Coil Resistance Ω
6	4.8	1.8	6.6	11.5 (1 ± 10%)
12	9.6	3.6	13.2	46 (1 ± 10%)
24	19.2	7.2	26.4	184 (1 ± 10%)
48	38.4	14.4	52.8	735 (1 ± 10%)
120	96	36	132	4550 (1 ± 10%)
240	176	72	264	14400 (1 ± 10%)

Coil

Coil power	DC type	0.9W to 1.1W
	AC type	1.2VA to 1.8VA

Safety Approval Ratings

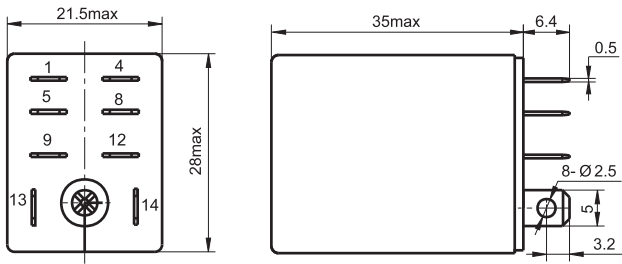
UL/CUL	10A 250VAC/30 VDC
	1/3HP 240VAC / 120VAC

Miniature Intermediate Power Relay QY



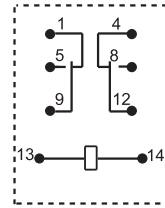
Outline dimensions (mm)

Plug-in

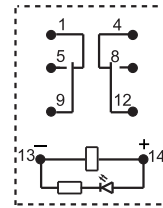


Wiring Diagram

No indication

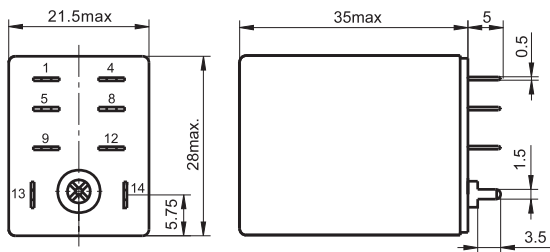


With LED



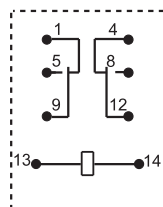
Remark: For AC parts with diode, the positive and negative pole markings on wiring diagram are not applicable.

PCB

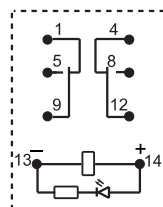


Wiring Diagram

No indication

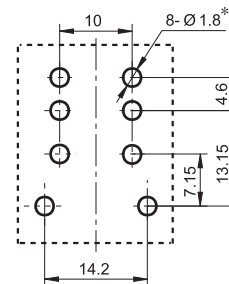


With LED



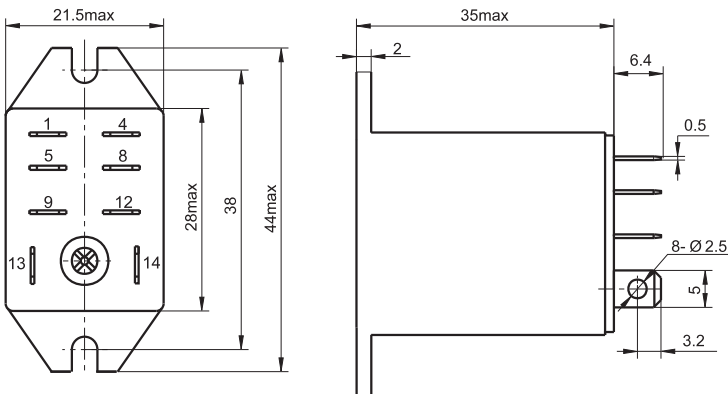
Remark: For AC parts with diode, the positive and negative pole markings on wiring diagram are not applicable.

PCB Layout

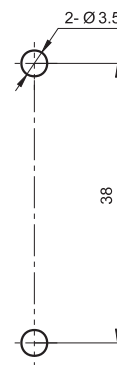


*: Please adjust the site of this diameter according to the actual application.

Flange Mounting



Mounting holes



Characteristics Curve

Maximum Switching Power (2 Pole CO)

