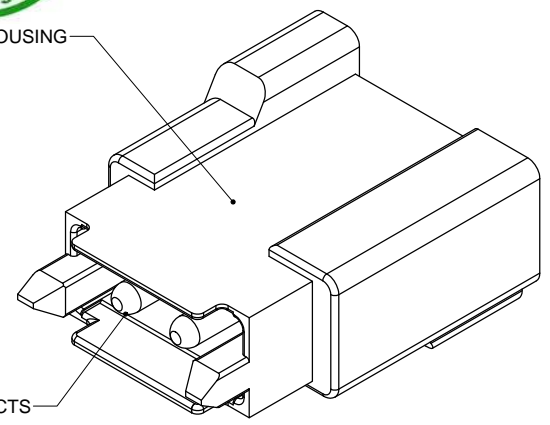
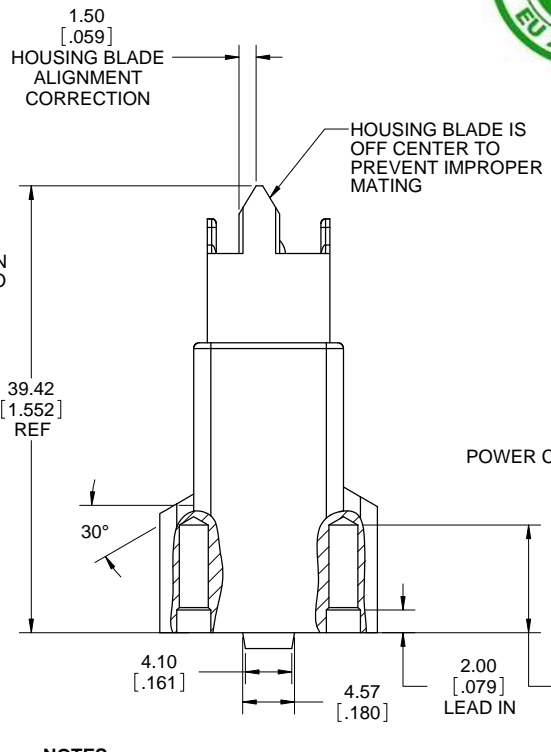


REVISIONS			
REV	DESCRIPTION, ECN, EAR NO.	DATE	APP'D
E	FINAL DESIGN	JAN11/11	
F	UPDATED DESIGN (EAR 13839)	MAR02/11	
G	SPEC UPDATED (EAR 13936)	AUG23/11	S.M
H	TOLERANCES ADDED	FEB1/12	S.M
J	UL FILE NO ADDED	MAR26/12	S.M



P/N: DWR-T200P-V23X-93

NOTES:

- MATERIALS: ALL MATERIALS ARE RoHS COMPLIANT PER EU DIRECTIVE 2002/95/EC AND AMENDMENTS.
 - HOUSING: HIGH TEMPERATURE RESISTANT NYLON, UL FLAMMABILITY RATING 94V-0, COLOUR BLACK
 - POWER CONTACTS: COPPER ALLOY. SEE NOTE 2 FOR PLATING.
- PLATING:
 - FOR P/N DWR-T200P-V233-93, POWER CONTACTS PLATED WITH 0.76µm (30µ") GOLD OVER 1.27µm (50µ") NICKEL
 - FOR P/N DWR-T200P-V236-93, POWER CONTACTS PLATED WITH 5.08µm (200µ") SILVER OVER 1.00µm (39µ") NICKEL
- WHEN MATING WITH SOCKET CONNECTOR P/N DWR-T200S-V23X-91 OR DWR-T200S-V23X-92, THE INSERTION FORCE REQUIRED WILL BE 5 KG MAX. THE WITHDRAWAL FORCE REQUIRED FOR SEPARATION WILL BE 0.7 KG MIN, 3 KG MAX. THE ORDER OF MECHANICAL AND ELECTRICAL ENGAGEMENT IS A) HOUSING BLADES, B) HOUSING SHROUD AND C) POWER CONTACTS.
- THREADED TERMINATION AND BLIND MOUNTING HOLES DESIGNED FOR ASSEMBLY ONTO 1.57mm [.062"] THICK PCB; 0.56 N.m (5 in.lbs) MAXIMUM TORQUE TO BE APPLIED TO CONTACT SCREWS, 1.47 N.m (13 in.lbs) MAXIMUM TORQUE TO BE APPLIED TO THREAD FORMING SCREWS.
- ELECTRICAL CHARACTERISTICS
 - CURRENT RATING: 40A PER CONTACT
 - OPERATING TEMPERATURE: -55C TO +105C
 - DIELECTRIC WITHSTANDING VOLTAGE: 1500VDC
 - INSULATION RESISTANCE: 5000 MEGAOHMS
- UL FILE NUMBER: E64911

UNLESS SPECIFIED OTHERWISE	DRAWN	S.CAELERS	NOV17/10
PRIMARY UNITS MILLIMETERS	CHECKED		
SECONDARY INCHES	M.E. APP'D		
REFERENCE IN PARENTHESES	Q.A. APP'D		
GENERAL TOLERANCES	DWG APPR.		
1 DECIMAL PLACE	ENG. REL. NO.	EAR 13802	
2 DECIMAL PLACES ±0.100	REF.		
3 DECIMAL PLACES	THIRD ANGLE PROJECTION		
ANGULAR DEGREES	DO NOT SCALE DRAWING		

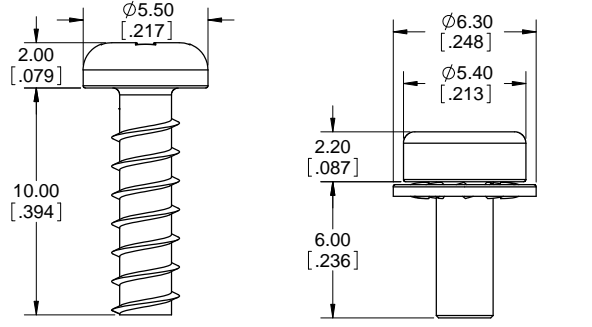
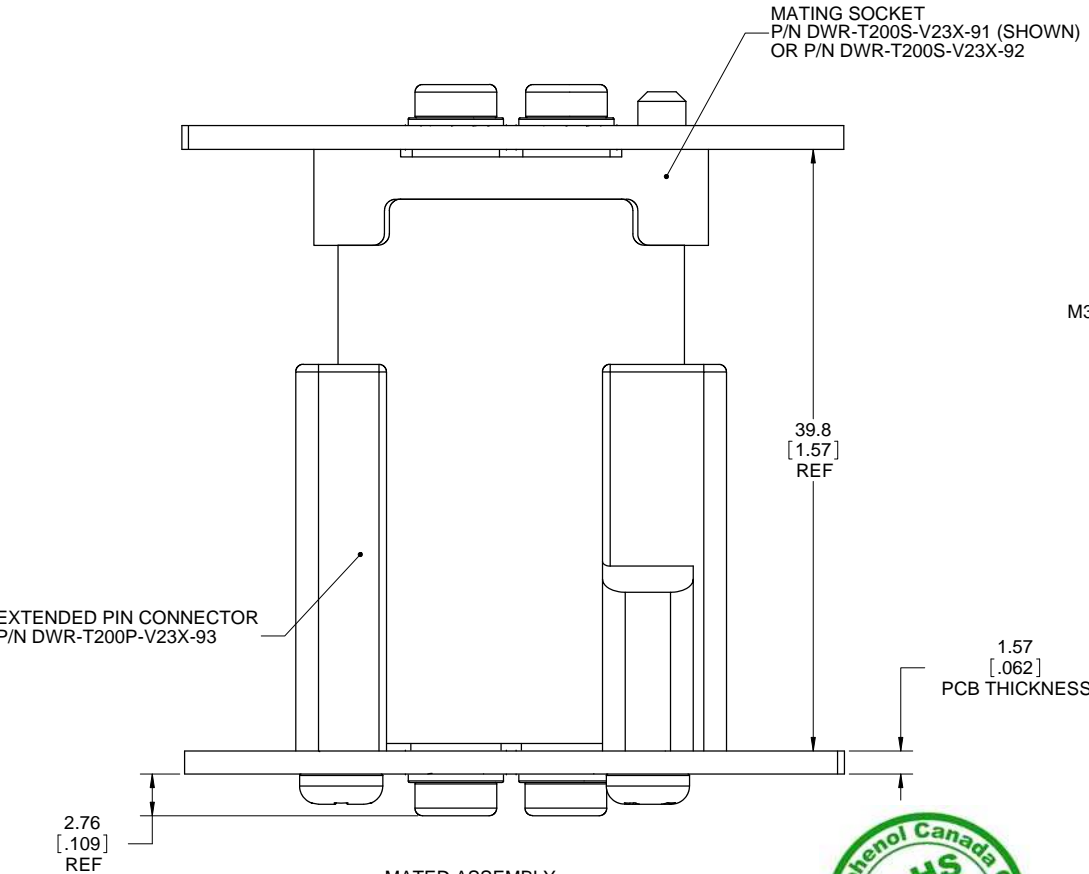
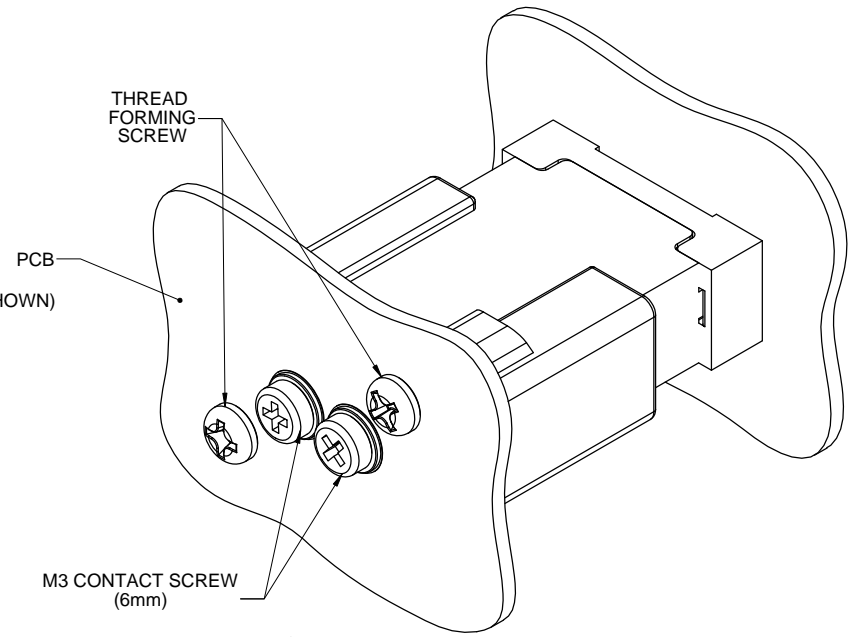
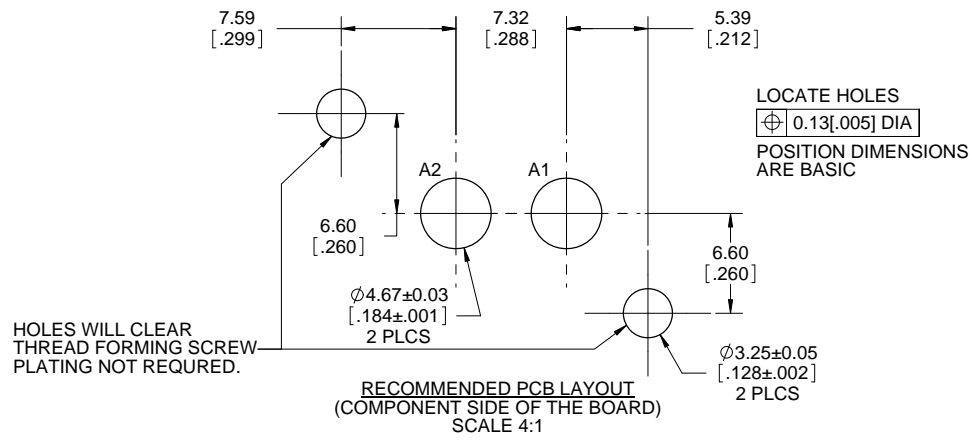
Amphenol Canada Corp.

DWR SERIES SLIM DRAWER, 2 POWER EXTENDED PIN CONNECTOR, SIZE 10 CONTACTS, SPECIAL .288" PITCH, THREADED TERMINATION, RoHS COMPLIANT

DWG. NO. **P-DWR-T200P-V23X-93** REV **J**

CODE ID NO. 03554 | DWG SIZE: X | SCALE: 2:1 | SHEET 1 OF 2

REVISIONS			
REV	DESCRIPTION, ECN, EAR NO.	DATE	APP'D
E	FINAL DESIGN	JAN11/11	
F	UPDATED DESIGN (EAR 13839)	MAR02/11	
G	SPEC UPDATED (EAR 13936)	AUG23/11	S.M
H	TOLERANCES ADDED	FEB1/12	S.M
J	UL FILE NUMBER ADDED	MAR26/12	S.M



THREAD FORMING SCREW (REF)

M3 CONTACT SCREW 6mm WITH LOCKING WASHER

MOUNTING HARDWARE
 SCALE 6:1

MATED ASSEMBLY
 MOUNTED ON .060" PCB
 SIDE VIEW
 SCALE 4:1



UNLESS SPECIFIED OTHERWISE	DRAWN	S.CAELERS	NOV17/10
PRIMARY UNITS MILLIMETERS	CHECKED		
SECONDARY UNITS INCHES	M.E. APP'D		
REFERENCE IN PARENTHESES	Q.A. APP'D		
GENERAL TOLERANCES	DWG APPR.		
1 DECIMAL PLACE	ENG. REL. NO.	EAR 13802	
2 DECIMAL PLACES ±0.100	REF.		
3 DECIMAL PLACES	THIRD ANGLE PROJECTION		
ANGULAR DEGREES	DO NOT SCALE DRAWING		

Amphenol Canada Corp.

DWR SERIES SLIM DRAWER, 2 POWER EXTENDED PIN CONNECTOR, SIZE 10 CONTACTS, SPECIAL .288" PITCH, THREADED TERMINATION, RoHS COMPLIANT

P-DWR-T200P-V23X-93

CODE ID NO. 03554 | DWG SIZE: X | SCALE: 2:1 | SHEET 2 OF 2