

ORDERING CODE: FCC17-E09PB-44BG

SERIES: FCE17=FILTERED D-SUB

SIZE/NUMBER OF CONTACTS: E09, A15, B25, OR C37

CONNECTOR STYLE: P=PIN, S=SOCKET

TERMINATION TYPE: B=.405 [10.29] FOOTPRINT

MOUNTING: 2=.120 [3.05] DIA THROUGH HOLE, 3=#4-40 UNC SELF-LOCKING THREAD, 4=#4-40 UNC THREAD, 6=M3 x 0.5 THREAD, E=CODE 4 MOUNTING WITH #4-40 UNC HEX JACK SOCKET SUPPLIED, F=FIXED FRONT JACK SOCKET #4-40 UNC

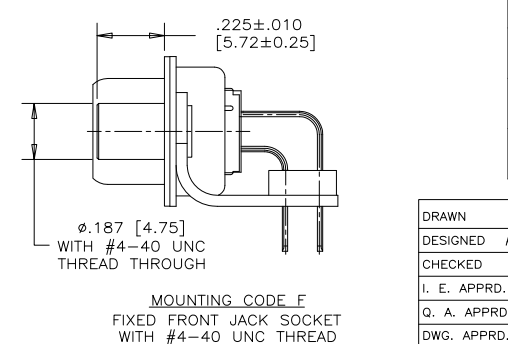
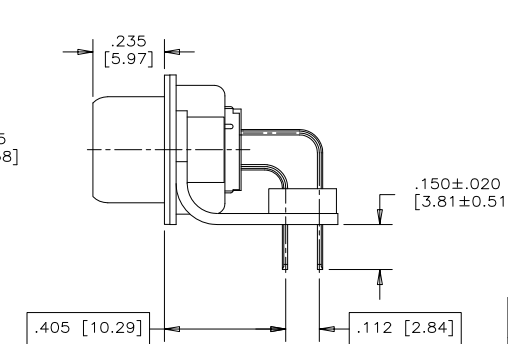
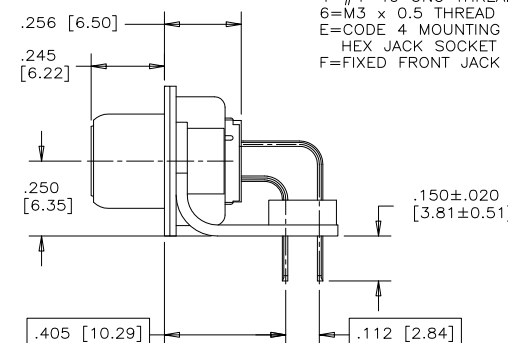
REVISIONS			
REV	ECN, ERN NO.	DATE	APPRD.
D	PRODUCT DRAWING (EAR 14204)	JUN11/13	K.L.

CONTACT FINISH/GOLD THICKNESS: NO DIGIT=STANDARD 15 MICRONS [0.38 MICRONS] GOLD ON MATING AREA, G=50 MICRONS [1.27 MICRONS] GOLD ON MATING AREA

MODIFIER: B=METAL MOUNTING BRACKETS

FILTER CAPACITANCE: D=50 pF, B=100 pF, O=180 pF, T=220 pF, F=330 pF, L=380 pF, 1=470 pF, E=680 pF, 4=820 pF, 5=1000 pF, 7=1200 pF, 6=1300 pF, J=1500 pF, E=2200 pF, 9=5600 pF, N=NO FILTERS, 8=47000 pF

REFER TO AMPHENOL CATALOGUE FOR FILTER PERFORMANCE CHARACTERISTICS



- NOTES:
- MATERIALS:
 - SHELL: STEEL, TIN PLATED
 - CONTACTS: PHOSPHOR BRONZE, GOLD PLATED OVER 50µ" [1.27 MICRONS] NICKEL IN THE MATING AREA AND 100µ" [2.54 MICRONS] TIN-LEAD ON THE TAILS.
 - INSULATOR: ENGINEERING THERMOPLASTIC, GLASS REINFORCED, UL FLAMMABILITY RATING 94V-0, COLOUR: BLACK
 - MOUNTING HARDWARE, STEEL OR COPPER ALLOY, TIN OR NICKEL PLATED.
 - CONTACT RESISTANCE: 15 MILLIOHMS MAXIMUM
 - INSULATION RESISTANCE: 3000 MEGOHMS MINIMUM
 - CURRENT RATING: 5 AMPS MAXIMUM
 - OPERATING TEMPERATURE: -40°C TO 85°C
 - TOLERANCE ±.005 [0.13] UNLESS INDICATED OTHERWISE.

SIZE	STYLE	A±.015 [0.38]	B±.005 [0.13]	C±.005 [0.13]	D±.005 [0.13]	E BSC.
E09	PIN	1.213 [30.81]	-----	.666 [16.92]	.984 [24.99]	.432 [10.97]
	SOCKET	-----	.643 [16.33]	-----	-----	-----
A15	PIN	1.541 [39.14]	-----	.994 [25.25]	1.312 [33.32]	.756 [19.20]
	SOCKET	-----	.971 [24.66]	-----	-----	-----
B25	PIN	2.088 [53.04]	-----	1.534 [38.96]	1.852 [47.04]	1.304 [33.12]
	SOCKET	-----	1.511 [38.38]	-----	-----	-----
C37	PIN	2.729 [69.32]	-----	2.182 [55.42]	2.500 [63.50]	1.956 [49.68]
	SOCKET	-----	2.159 [54.84]	-----	-----	-----

DRAWN: I.ESSAJEE, DATE: OCT01/96
 DESIGNED: K.LAMBIE, DATE: SEP30/96
 CHECKED: _____
 I. E. APPRD. _____
 Q. A. APPRD. _____
 DWG. APPRD. _____
 ENG. REL. NO. _____
 REF. _____
 DIMENSIONS ARE IN INCHES [mm], CODE ID. NO. 03554

Amphenol Canada Corp.

FCC17 SERIES FILTERED D-SUB CONNECTOR, PIN & SOCKET, RIGHT ANGLE .405 [10.29] F/P, METAL MOUNTING BRACKET

DWG: C, DRAWING NO. P-FCC17-XXXXB-XXBX, REV. D
 SCALE: 3/1, WT. _____, SURF. _____, SHEET 1 OF 1

THIS DOCUMENT CONTAINS PROPRIETARY INFORMATION AND SUCH INFORMATION MAY NOT BE DISCLOSED TO OTHERS FOR ANY PURPOSE OR USED FOR MANUFACTURING PURPOSES WITHOUT WRITTEN PERMISSION FROM AMPHENOL CANADA CORP.