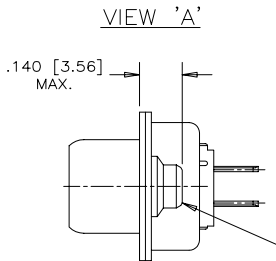
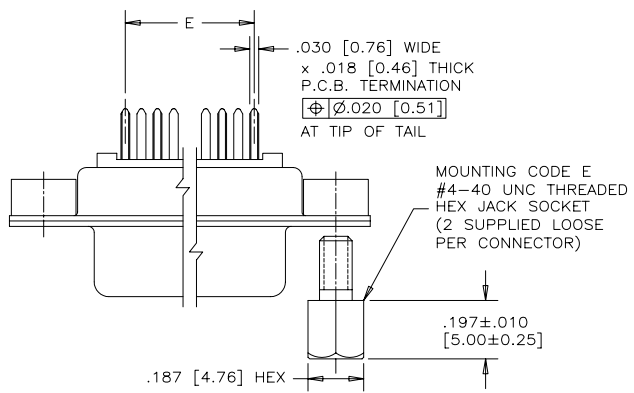


| REVISIONS | | | |
|-----------|-----------------------------|----------|--------|
| REV | ECN, ERN NO. | DATE | APPRD. |
| J | PRODUCT DRAWING (EAR 12782) | JUN27/05 | K.L. |



ORDERING CODE: FCC17 - E09PE - 440G

SERIES _____

SIZE/NUMBER OF CONTACTS
E09, A15, B25, OR C37

CONNECTOR STYLE
P=PIN
S=SOCKET

TERMINATION TYPE
E=VERTICAL MOUNT PCB TAIL

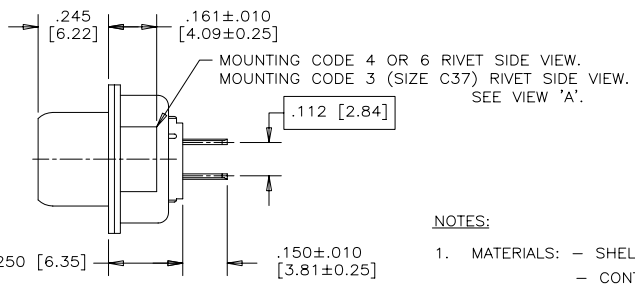
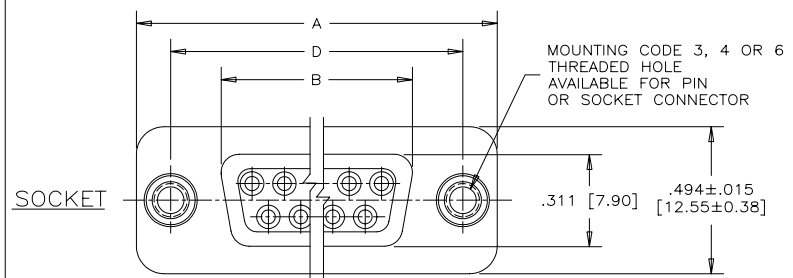
CONTACT FINISH/GOLD THICKNESS
NO DIGIT=STANDARD 15 MICROINCHES
[0.38 MICRONS] GOLD ON MATING AREA
G=50 MICROINCHES [1.27 MICRONS]
GOLD ON MATING AREA

MODIFIER
0=STANDARD

FILTER CAPACITANCE
D=50 pF 5=1000 pF
B=100 pF 7=1200 pF
O=180 pF E=2200 pF
F=330 pF 9=5600 pF
1=470 pF 8=47000 pF
4=820 pF N=NOT FILTERED

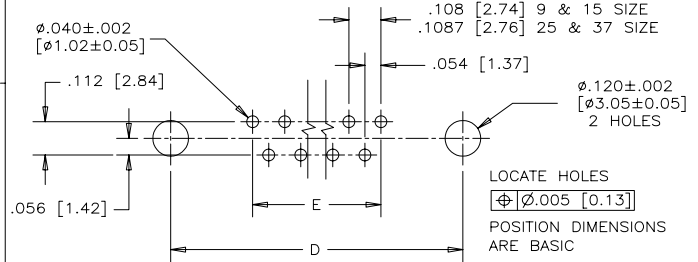
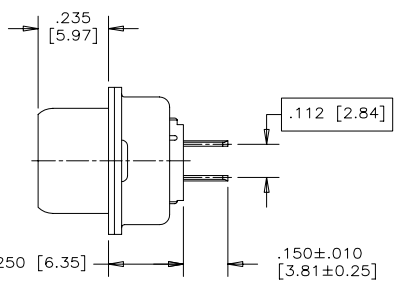
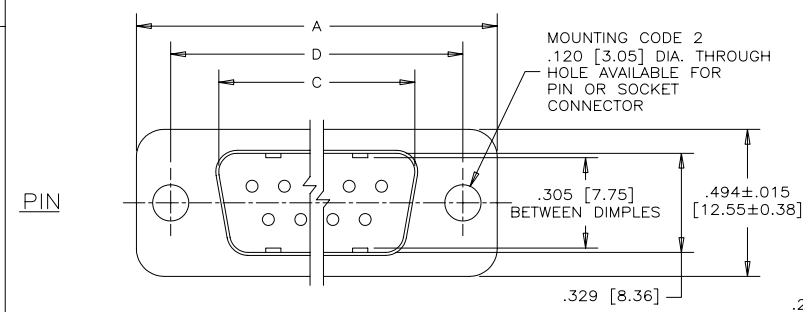
REFER TO AMPHENOL CATALOGUE FOR
FILTER PERFORMANCE CHARACTERISTICS

MOUNTING
2=.120[3.05] DIA THROUGH HOLE
3=#4-40 UNC SELF-LOCKING THREAD
4=#4-40 UNC THREAD
5=#4-40 UNC THREADED STANDOFF
6=M3 x 0.5 THREAD
9=STANDOFF WITH BOARDLOCK &
#4-40 THREADED JACK SOCKETS
INSTALLED
A=#4-40 THREADED STANDOFF WITH
BOARDLOCK
E=CODE 4 MOUNTING WITH #4-40 UNC
HEX JACK SOCKET SUPPLIED.
J=M3 x 0.5 THREADED STANDOFF WITH
BOARDLOCK

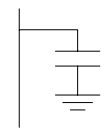


NOTES:

- MATERIALS: - SHELLS - TIN PLATED STEEL
- CONTACTS - PHOSPHOR BRONZE PLATED WITH GOLD OVER NICKEL ON THE MATING AREA AND TIN-LEAD ON THE TERMINALS
- INSULATOR - ENGINEERING THERMOPLASTIC, FLAMMABILITY RATING UL94V-0, BLACK.
- CONTACT RESISTANCE: 15 MILLIOHMS MAXIMUM.
- INSULATION RESISTANCE: 3000 MEGOHMS MINIMUM
- CURRENT RATING: 5 AMPS MAXIMUM
2 AMPS FILTERING MAXIMUM
- OPERATING TEMPERATURE: -40°C TO 85°C.
- TOLERANCE, UNLESS INDICATED OTHERWISE, ±.005 [0.13].



CAPACITANCE SCHEMATIC
TYPICAL FOR EACH LINE



| SIZE | STYLE | A±.015 [0.38] | B±.005 [0.13] | C±.005 [0.13] | D±.005 [0.13] | E BSC. |
|------|--------|------------------|------------------|------------------|------------------|------------------|
| E09 | PIN | 1.213 [30.81] | ----- | .666[16.92] | .984 [24.99] | .432 [10.97] |
| | SOCKET | | .643[16.33] | ----- | | |
| A15 | PIN | 1.541 [39.14] | ----- | .994[25.25] | 1.312 [33.32] | .756 [19.20] |
| | SOCKET | | .971[24.66] | ----- | | |
| B25 | PIN | 2.088 [53.04] | ----- | 1.534[38.96] | 1.852 [47.04] | 1.304 [33.12] |
| | SOCKET | | 1.511[38.38] | ----- | | |
| C37 | PIN | 2.729 [69.32] | ----- | 2.182[55.42] | 2.500 [63.50] | 1.956 [49.68] |
| | SOCKET | | 2.159[54.84] | ----- | | |

| | |
|-------------------------------|--------------------|
| DRAWN I.ESSAJEE | DATE 97/12/01 |
| DESIGNED K.LAMBIE | 97/11/27 |
| CHECKED | |
| I. E. APPRD. | |
| Q. A. APPRD. | |
| DWG. APPRD. | |
| ENG. REL. NO. | |
| REF. | |
| DIMENSIONS ARE IN INCHES [mm] | CODE ID. NO. 03554 |

Amphenol Canada Corp.

TITLE FCC17 FILTERED D-SUB, VERTICAL MOUNT PCB TAIL, PIN & SOCKET

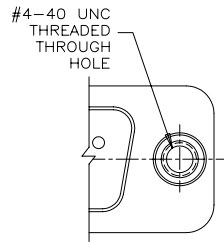
| | | |
|-----------|--------------------|--------------|
| DWG | DRAWING NO. | REV. |
| C | P-FCC17-XXXXE-XXOX | J |
| SCALE 3/1 | WT. ----- | SURF. ----- |
| | | SHEET 1 OF 2 |

THIS DOCUMENT CONTAINS PROPRIETARY INFORMATION AND SUCH INFORMATION MAY NOT BE DISCLOSED TO OTHERS FOR ANY PURPOSE OR USED FOR MANUFACTURING PURPOSES WITHOUT WRITTEN PERMISSION FROM AMPHENOL CANADA CORP.

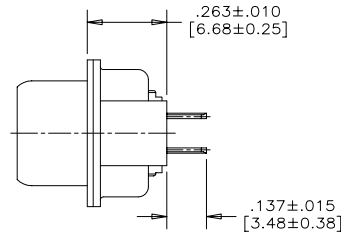
SEE SHEET #2 FOR ADDITIONAL MOUNTING OPTION VIEWS

| REVISIONS | | | |
|-----------|-----------------------------|----------|--------|
| REV | ECN, ERN NO. | DATE | APPRD. |
| J | PRODUCT DRAWING (EAR 12782) | JUN27/05 | K.L. |

ADDITIONAL MOUNTING OPTIONS AVAILABLE
FOR PIN OR SOCKET CONNECTOR

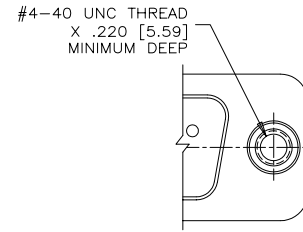


PARTIAL FRONT VIEW

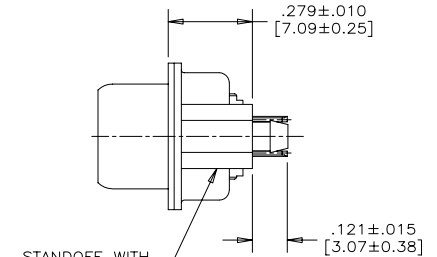


SIDE VIEW

MOUNTING CODE 5

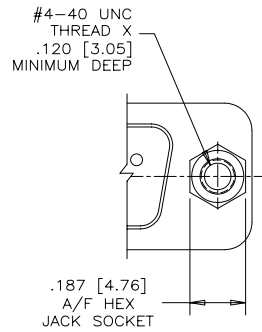


PARTIAL FRONT VIEW

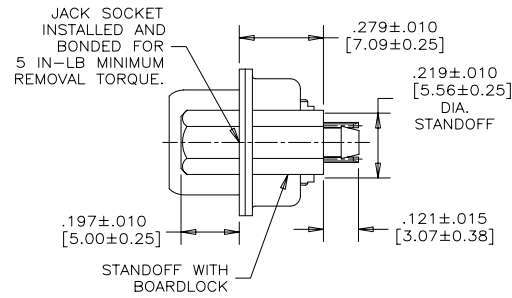


SIDE VIEW

MOUNTING CODE A

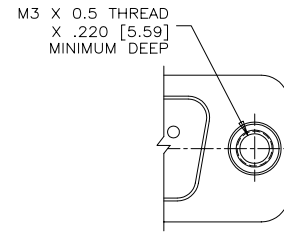


PARTIAL FRONT VIEW

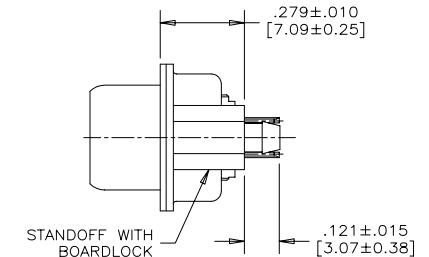


SIDE VIEW

MOUNTING CODE 9



PARTIAL FRONT VIEW



SIDE VIEW

MOUNTING CODE J

| | |
|-------------------------------|--------------------|
| DRAWN I.ESSAJEE | DATE 97/12/01 |
| DESIGNED K.LAMBIE | 97/11/27 |
| CHECKED | |
| I. E. APPRD. | |
| Q. A. APPRD. | |
| DWG. APPRD. | |
| ENG. REL. NO. | |
| REF. | |
| DIMENSIONS ARE IN INCHES [mm] | CODE ID. NO. 03554 |

Amphenol Canada Corp.

TITLE FCC17 FILTERED D-SUB,
VERTICAL MOUNT PCB TAIL,
PIN & SOCKET

| | | |
|--------------|--------------------|-------------|
| DWG | DRAWING NO. | REV. |
| C | P-FCC17-XXXXE-XXOX | J |
| SCALE 3/1 | WT. ----- | SURF. ----- |
| SHEET 2 OF 2 | | |

THIS DOCUMENT CONTAINS PROPRIETARY INFORMATION AND SUCH INFORMATION MAY NOT BE DISCLOSED TO OTHERS FOR ANY PURPOSE OR USED FOR MANUFACTURING PURPOSES WITHOUT WRITTEN PERMISSION FROM AMPHENOL CANADA CORP.