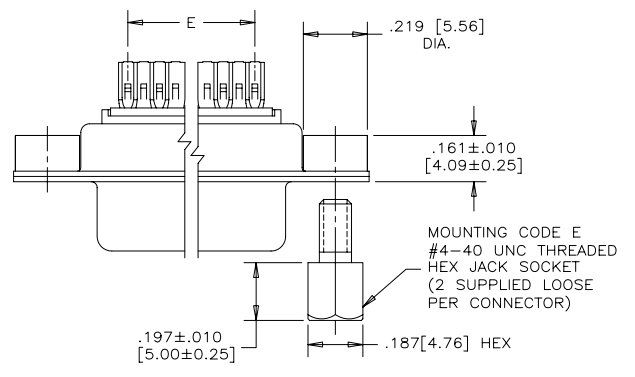


| REVISIONS | | | |
|-----------|----------------------------|----------|--------|
| REV | ECN, ERN NO. | DATE | APPRD. |
| K | PRODUCT DRAWING (EAR13732) | JUN16/10 | K.L. |



ORDERING CODE: **F C C 1 7 - E 0 9 P M - 4 4 0 G**

SERIES —————

SIZE/NUMBER OF CONTACTS
E09, A15, B25, OR C37

CONNECTOR STYLE
P = PIN
S = SOCKET

TERMINATION TYPE
M = SOLDER CUP

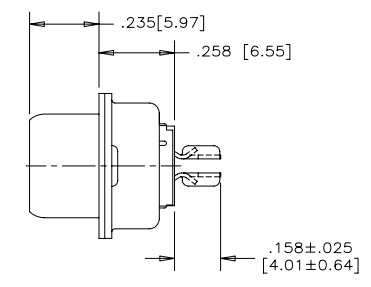
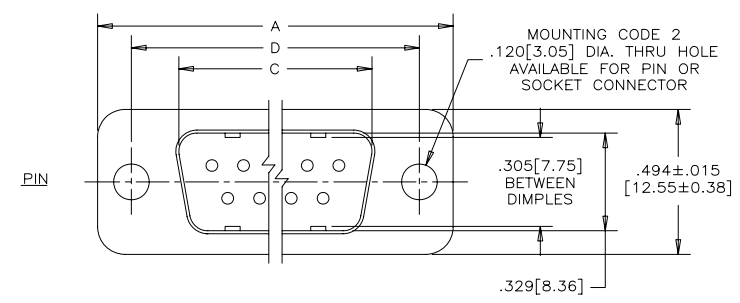
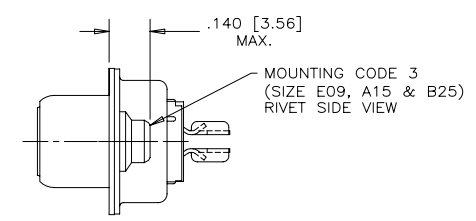
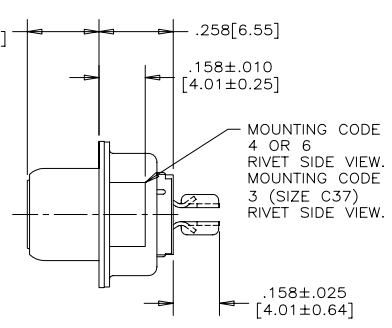
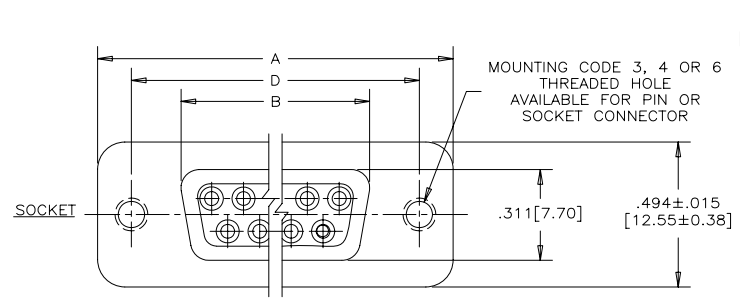
MOUNTING
2 = .120[3.05] DIA THROUGH HOLE
3 = #4-40 UNC SELF-LOCKING THREAD
4 = #4-40 UNC THREAD
6 = M3 x 0.5 THREAD
E = CODE 4 MOUNTING WITH #4-40 UNC HEX JACK SOCKET SUPPLIED LOOSE

CONTACT FINISH/GOLD THICKNESS
NO DIGIT = STANDARD 15 MICRONS [0.38 MICRONS] GOLD
G = 50 MICRONS [1.27 MICRONS] GOLD

MODIFIER
0 = STANDARD

FILTER CAPACITANCE
D = 50 pF 5 = 1000 pF
B = 100 pF 7 = 1200 pF
0 = 180 pF 6 = 1300 pF
T = 220 pF J = 1500 pF
F = 330 pF E = 2200 pF
L = 380 pF 9 = 5600 pF
1 = 470 pF 8 = 47000pF
4 = 820 pF N = NO FILTERS

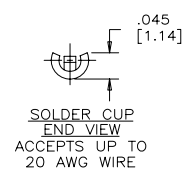
REFER TO AMPHENOL CATALOGUE FOR FILTER PERFORMANCE CHARACTERISTICS



NOTES:

- MATERIALS: — SHELLS — TIN PLATED STEEL
— CONTACTS — PHOSPHOR BRONZE PLATED WITH GOLD OVER NICKEL ON THE MATING AREA AND TIN-LEAD ON THE TERMINALS
— INSULATOR — ENGINEERING THERMOPLASTIC, FLAMMABILITY RATING UL94V-0, BLACK.
- CONTACT RESISTANCE: 15 MILLIOHMS MAXIMUM.
- INSULATION RESISTANCE: 3000 MEGOHMS MINIMUM
- CURRENT RATING: 5 AMPS MAXIMUM
2 AMPS FILTERING MAXIMUM
- OPERATING TEMPERATURE: -40°C TO 85°C.
- TOLERANCE, UNLESS INDICATED OTHERWISE, ±.005 [0.13].

| SIZE | STYLE | A±.015 [0.38] | B±.005 [0.13] | C±.005 [0.13] | D±.005 [0.13] | E BSC. |
|------|--------|---------------|---------------|---------------|---------------|---------------|
| E09 | PIN | 1.213 [30.81] | ----- | .666[16.92] | .984 [24.99] | .432 [10.97] |
| | SOCKET | | .643[16.33] | ----- | | |
| A15 | PIN | 1.541 [39.14] | ----- | .994[25.25] | 1.312 [33.32] | .756 [19.20] |
| | SOCKET | | .971[24.66] | ----- | | |
| B25 | PIN | 2.088 [53.04] | ----- | 1.534[38.96] | 1.852 [47.04] | 1.304 [33.12] |
| | SOCKET | | 1.511[38.38] | ----- | | |
| C37 | PIN | 2.729 [69.32] | ----- | 2.182[55.42] | 2.500 [63.50] | 1.956 [49.68] |
| | SOCKET | | 2.159[54.84] | ----- | | |



| | |
|-------------------------------|----------------------|
| DRAWN <i>I.ESSAJEE</i> | DATE <i>98/03/09</i> |
| DESIGNED <i>K.LAMBIE</i> | <i>98/03/04</i> |
| CHECKED | |
| I. E. APPRD. | |
| Q. A. APPRD. | |
| DWG. APPRD. | |
| ENG. REL. NO. | |
| REF. | |
| DIMENSIONS ARE IN INCHES [mm] | CODE ID. NO. 03554 |

| | | | |
|---|--------------------------------|-------------|--------------|
| Amphenol Canada Corp. | | | |
| TITLE FCC17 FILTERED D-SUB CONNECTOR, PIN & SOCKET, SOLDER CUP CONTACTS | | | |
| DWG C | DRAWING NO. P-FCC17-XXXXM-XXOX | REV. K | |
| SCALE 3/1 | WT. ----- | SURF. ----- | SHEET 1 OF 1 |

THIS DOCUMENT CONTAINS PROPRIETARY INFORMATION AND SUCH INFORMATION MAY NOT BE DISCLOSED TO OTHERS FOR ANY PURPOSE OR USED FOR MANUFACTURING PURPOSES WITHOUT WRITTEN PERMISSION FROM AMPHENOL CANADA CORP.