

FS1 - S02 - 1XXX

REVISIONS			
REV	REN	DESCRIPTION	DATE APPROVED
S		BASOMBER GASKET OPTION ADDED	SEP 10/09 ZLJ
T		DEVAL KADDER	JAN 14/10 ZLJ

MOUNTING SCREW OPTION

- 1 = 8 mm MOUNTING SCREW SHIPPED BULK IN SAME TRAYS WITH CAGE ASSEMBLIES
- 2 = NO MOUNTING SCREW SUPPLIED
- 3 = 10 mm MOUNTING SCREW WITH LOCK WASHER SHIPPED BULK IN SAME TRAYS WITH CAGE ASSEMBLIES

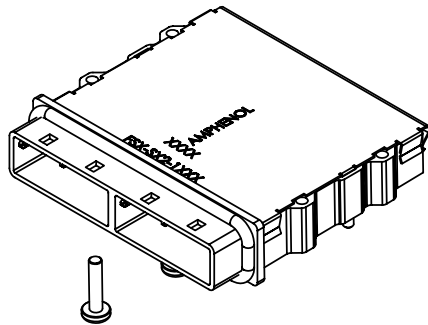
GASKET OPTION

- E = STAINLESS STEEL EMI GASKET
- F = FOAM, CHOMERIC S OFT SHIELD 4800, EMI GASKET
- C = CONDUCTIVE ELASTOMER, CHOMERIC S C6305

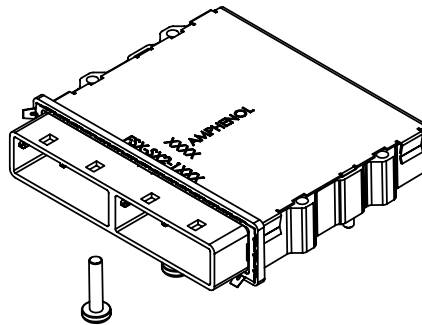
KEYING OPTION (SEE BELOW TABLE FOR FURTHER CLARIFICATION)

- 0 = NO KEY
- 1 = KEY # 1 (IN ALL PORTS)
- 2 = KEY # 2 (IN ALL PORTS)
- 4 = KEY # 4 (IN ALL PORTS)
- 6 = KEY # 6 (IN ALL PORTS)
- 7 = KEY # 7 (IN ALL PORTS)
- D22 = KEY # 2 AND # 4 (IN ALL PORTS)
- D66 = KEY # 4 AND # 6 (IN ALL PORTS)
- D26 = KEY # 2 AND # 4 IN LEFT PORT/ KEY # 4 AND # 6 IN RIGHT PORT
- D62 = KEY # 4 AND # 6 IN LEFT PORT/ KEY # 2 AND # 4 IN RIGHT PORT

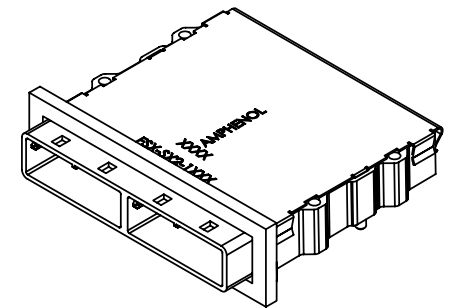
Left Key Option	Right Key Option	Part Number	Description
0	0	FS1-S02-10XX	No Key
1	1	FS1-S02-11XX	SATA 'X' Cable
4	4	FS1-S02-14XX	SAS Universal Port
7	7	FS1-S02-17XX	SATA 'M' Cable
2, 4	2, 4	FS1-S02-1D22XX	SAS Out Port
4, 6	4, 6	FS1-S02-1D66XX	SAS In Port
2, 4	4, 6	FS1-S02-1D26XX	SAS Out/In Port
4, 6	2, 4	FS1-S02-1D62XX	SAS In/Out Port



PARTNUMBER: **FS1-S02-14C1** SHOWN
(CAGE ASSEMBLY WITH ELASTOMERIC GASKET AND 8mm MOUNTING SCREWS SHIPPED BULK)



PARTNUMBER: **FS1-S02-14E** SHOWN
(CAGE ASSEMBLY WITH STAINLESS STEEL GASKET AND 8mm MOUNTING SCREWS SHIPPED BULK)



PARTNUMBER: **FS1-S02-14F** SHOWN
(CAGE ASSEMBLY WITH FOAM GASKET AND 8mm MOUNTING SCREWS SHIPPED BULK)

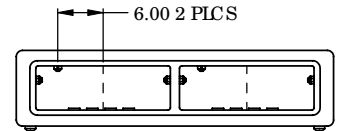
DO NOT SCALE DRAWING



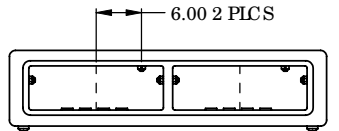
THIS DOCUMENT CONTAINS PROPRIETARY INFORMATION AND SUCH INFORMATION MAY NOT BE DISCLOSED TO OTHERS FOR ANY PURPOSE OR USED FOR MANUFACTURING PURPOSES WITHOUT PERMISSION FROM AMPHENOL CANADA CORP.

UNLESS OTHERWISE SPECIFIED DIMENSIONS ARE IN MILLIMETERS TOLERANCES ARE:		APPROVALS	DATE	Amphenol Canada Corp.
DECIMAL	ANGLE	DRAWN	NOV 7/08	
XX ± 0.25	± 2°	ZLJ	NOV 7/08	
XXX ± 0.10		ZLJ		
XXX ± 0.05				
MATERIAL FINISH		QA APP'D		
DRG. NO.	EA APP'D			
EAR 123XX				
CONTRACT NO.	DRG. APP'D			
03554				
		SCALE	DRW. NO.	
		NIS	P-FS1-S02-1XXX	REV. T
			PREP'D	SFF
				SHEET 1 OF 2

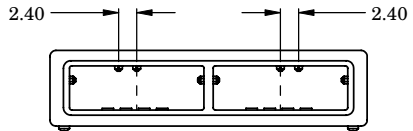
REVISIONS			
REV	REN	DESC	DATE
S		SEE SHEET 1	SEP 19/08
T		SEE SHEET 1	DAN 14/10



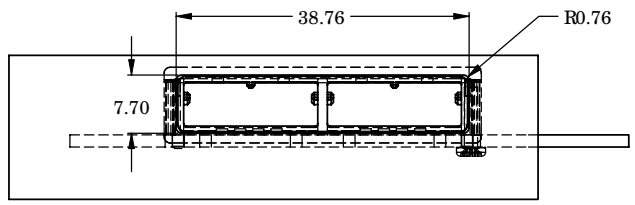
KEY # 1-1



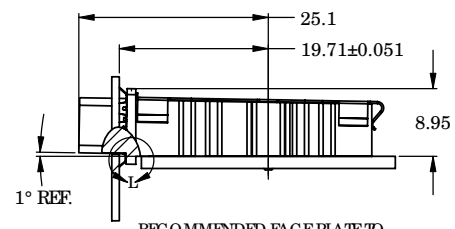
KEY # 7-7



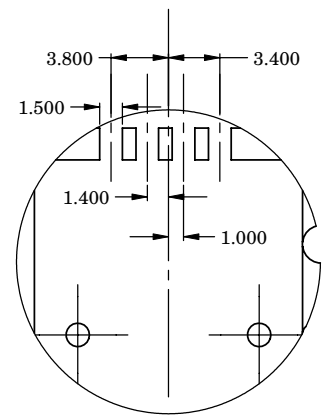
KEY # 2, 4 - 4, 6



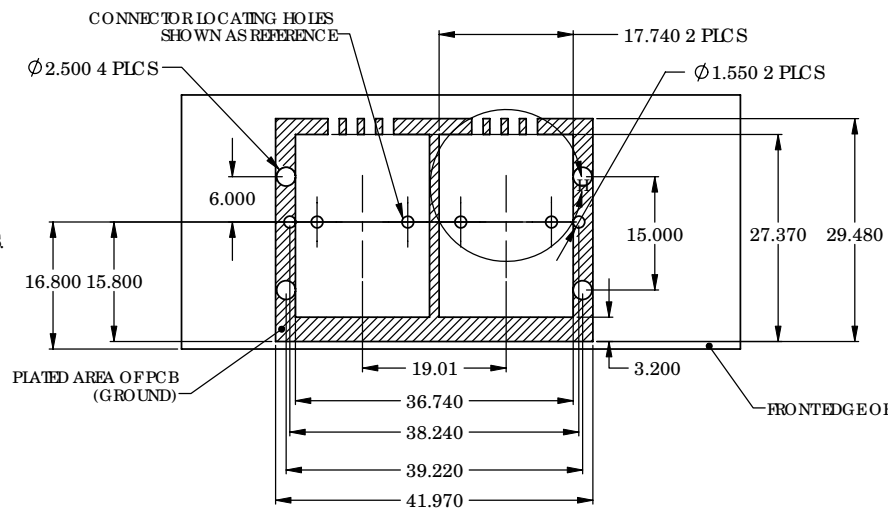
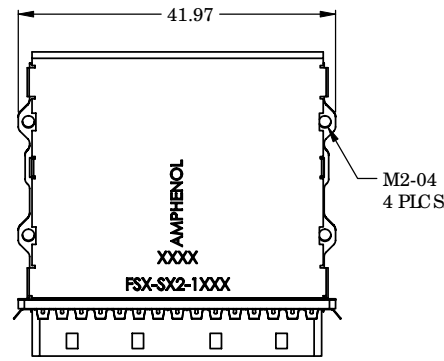
RECOMMENDED PANEL CUT-OUT



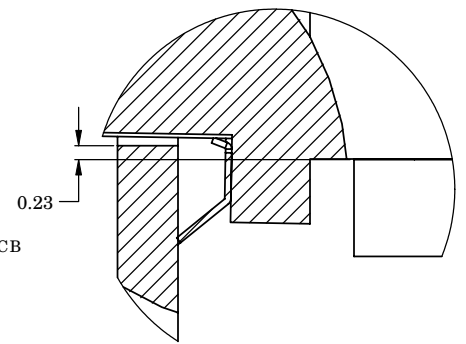
RECOMMENDED FACE PLATE TO LOCATING POST DISTANCE



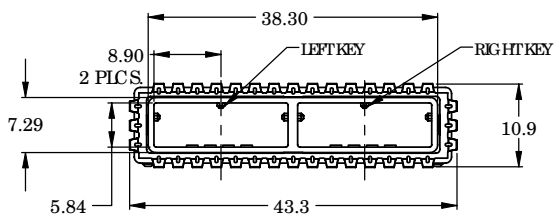
DETAIL H SCALE 4:1



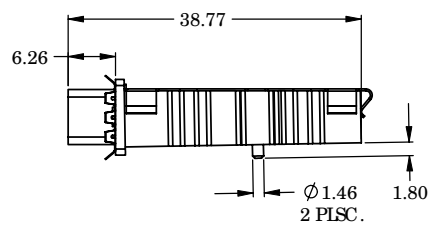
RECOMMENDED PCB LAYOUT



DETAIL I SCALE 16:1



KEY # 4-4



DO NOT SCALE DRAWING

NOTES:

1) MATERIAL:

CAGE ZINC DIECAST SHELL WITH 150 MICRONS THICKNESS OF NiC REL PLATING
 EMC GASKET SEE SHEET 1
 COVER: STAINLESS STEEL
 MOUNTING SCREW: AISI 1010 STEEL

2) ROHS COMPLIANT



UNLESS OTHERWISE SPECIFIED DIMENSIONS ARE IN MILLIMETERS TOLERANCES ARE:		APPROVALS		DATE		Amphenol Canada Corp.	
DECIMAL	ANGLE	DRAWN	ZLJ	SEP 19/08	DATE	MINISAS 1 DEG REE 2 PORT CAGE	
XX ± 0.25	± 2°	DESIGNED	ZLJ	SEP 19/08	SCALE	NTS	
XXX ± 0.10		CHECKED			SCALE	NTS	
XXX ± 0.05		QA APP'D			SCALE	NTS	
MATERIAL FINISH					SCALE	NTS	
DWG. NO.	EAR 123XX	DATE	C	REV.	DRAWN BY	P-FSL-S02-1XXX	REV. T
CONTRACT NO.	03554	DWG. APP'D		SHEET	SCALE	NTS	2 OF 2

THIS DOCUMENT CONTAINS PROPRIETARY INFORMATION AND SUCH INFORMATION MAY NOT BE DISCLOSED TO OTHERS FOR ANY PURPOSE OR USED FOR MANUFACTURING PURPOSES WITHOUT PERMISSION FROM AMPHENOL CANADA CORP.