

REVISIONS			
REV	DESCRIPTION, ECN, EAR NO.	DATE	APP'D
S	ELASTOMERIC GASKET OPTION ADDED	SEP 15/09	ZLJ
T	DETAIL H ADDED	JAN 14/10	ZLJ
AA	NO GASKET OPTION ADDED	JAN 30/13	ZLJ
AB	CORRECTED VIEW	MAY 17/13	ZLJ

FS1 - SF2 - 1 XXX

MOUNTING SCREW OPTION

- 1 = 8 mm MOUNTING SCREW SHIPPED BULK IN SAME TRAYS WITH CAGE ASSEMBLIES
- 2 = NO MOUNTING SCREW SUPPLIED
- 3 = 10 mm MOUNTING SCREW WITH LOCK WASHER SHIPPED BULK IN SAME TRAYS WITH CAGE ASSEMBLIES

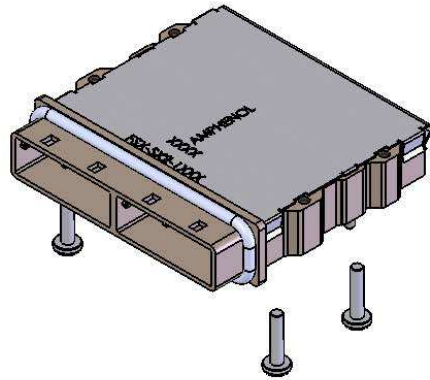
GASKET OPTION

- N = NO GASKET
- E = STAINLESS STEEL EMI GASKET
- F = FOAM, CHOMERIC'S SOFT SHIELD 4800, EMI GASKET
- C = CONDUCTIVE ELASTOMER, CHOMERIC'S C6305

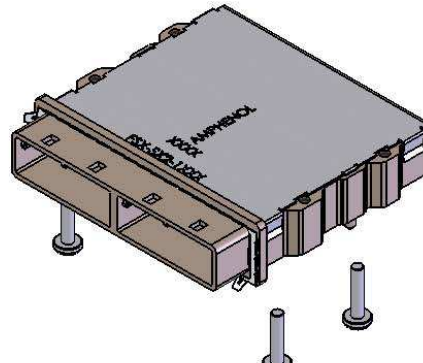
KEYING OPTION (SEE BELOW TABLE FOR FURTHER CLARIFICATION)

- 0 = NO KEY
- 1 = KEY # 1 (IN ALL PORTS)
- 2 = KEY # 2 (IN ALL PORTS)
- 4 = KEY # 4 (IN ALL PORTS)
- 6 = KEY # 6 (IN ALL PORTS)
- 7 = KEY # 7 (IN ALL PORTS)
- D22 = KEY # 2 AND # 4 (IN ALL PORTS)
- D66 = KEY # 4 AND # 6 (IN ALL PORTS)
- D26 = KEY # 2 AND # 4 IN LEFT PORT / KEY # 4 AND # 6 IN RIGHT PORT
- D62 = KEY # 4 AND # 6 IN LEFT PORT / KEY # 2 AND # 4 IN RIGHT PORT

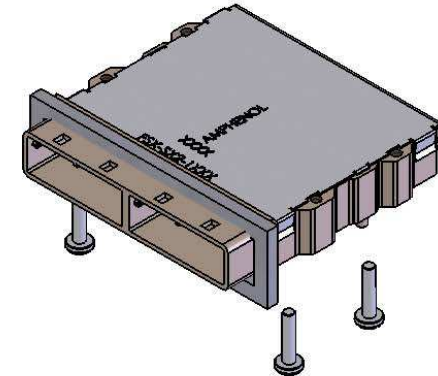
Left Key Option	Right Key Option	Part Number	Description
0	0	FS1-SF2-10XX	No Key
1	1	FS1-SF2-11XX	SATA 'X' Cable
4	4	FS1-SF2-14XX	SAS Universal Port
7	7	FS1-SF2-17XX	SATA 'M' Cable
2,4	2,4	FS1-SF2-1D22XX	SAS Out Port
4,6	4,6	FS1-SF2-1D66XX	SAS In Port
2,4	4,6	FS1-SF2-1D26XX	SAS Out/In Port
4,6	2,4	FS1-SF2-1D62XX	SAS In/Out Port



PARTNUMBER: ~~FS1-SF2-14C1~~ SHOWN
(CAGE ASSEMBLY WITH ELASTOMERIC GASKET AND 8mm MOUNTING SCREWS SHIPPED BULK)



PARTNUMBER: ~~FS1-SF2-14E~~ SHOWN
(CAGE ASSEMBLY WITH STAINLESS STEEL GASKET AND 8mm MOUNTING SCREWS SHIPPED BULK)



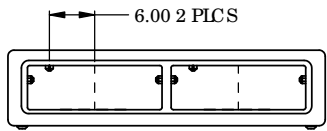
PARTNUMBER: ~~FS1-SF2-14F~~ SHOWN
(CAGE ASSEMBLY WITH FOAM GASKET AND 8mm MOUNTING SCREWS SHIPPED BULK)

UNLESS SPECIFIED OTHERWISE	DRAWN	ZLJ	LAN 06/09
PRIMARY UNITS MILLIMETERS	CHECKED	ZLJ	JAN 06/09
SECONDARY MILLIMETERS	M.E.	APP'D	
REFERENCE IN PARENTHESES	Q.A.	APP'D	
GENERAL TOLERANCES	DWG APPR.		
1 DECIMAL PLACE ±0.30	ENG. REL. NO.		
2 DECIMAL PLACES ±0.20	REF.		
3 DECIMAL PLACES ±0.10	THIRD ANGLE PROJECTION		
ANGULAR DEGREES ±1.0°	DO NOT SCALE DRAWING		

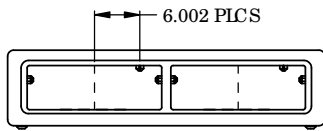
Amphenol High Speed Interconnects
A Division of Amphenol Corp. www.amphenol-highspeed.com

MINI SAS "0" DEGREE
2 PORT CAGE

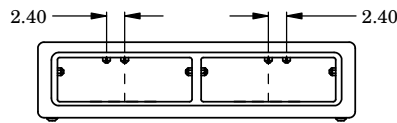
DWG. NO.	P-FS1-SF2-1XXX	REV	AB
CODE ID NO. 03554	DWG. SIZE: C	SCALE: NTS	SHEET 1 OF 2



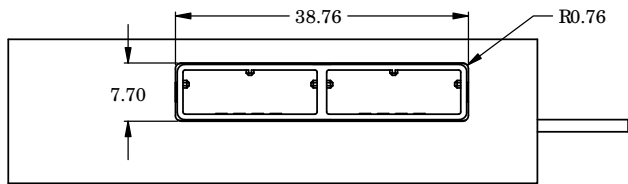
KEY # 1-1



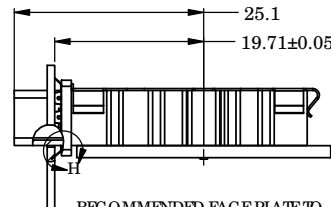
KEY # 7-7



KEY # 2, 4 - 4, 6

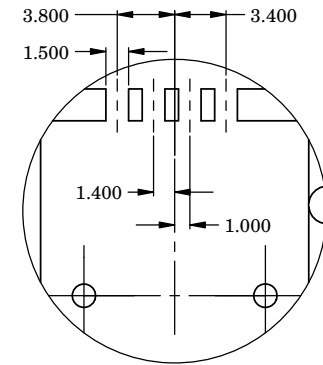


RECOMMENDED PANEL CUTOUT

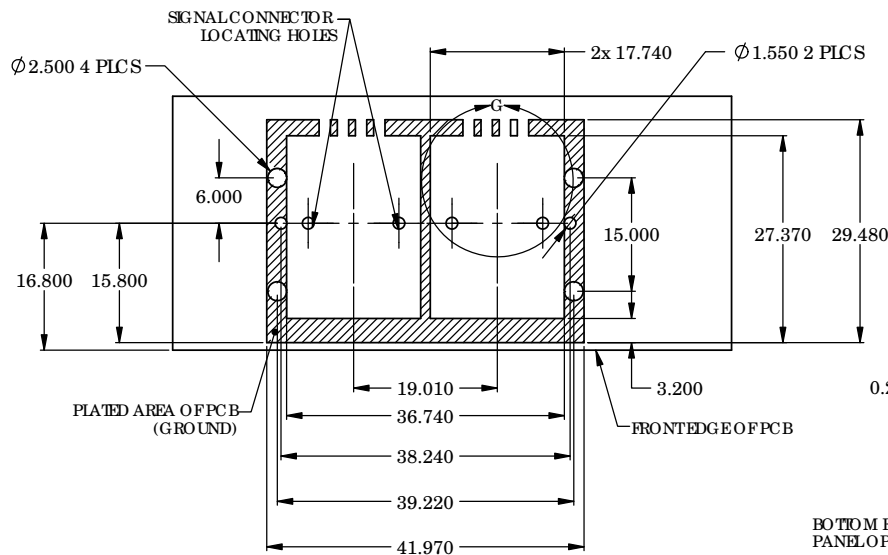
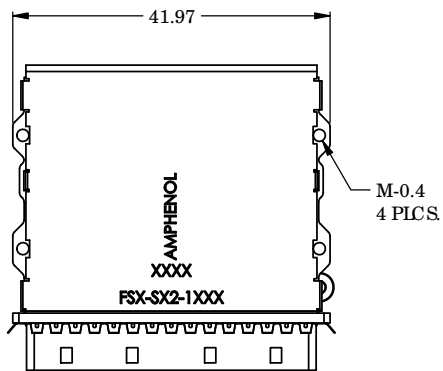


RECOMMENDED FACE PLATE TO LOCATING POST DISTANCE

REVISIONS			
REV	DESCRIPTION, ECN, EAR NO.	DATE	APP'D
S	ELASTOMERIC GASKET OPTION ADDED	SEP 15/09	ZLJ
T	DETAIL H ADDED	JAN 14/10	ZLJ
AA	NO GASKET OPTION ADDED	JAN 30/13	ZLJ
AB	CORRECTED VIEW	MAY 17/13	ZLJ



DETAIL G
SCALE 4 : 1

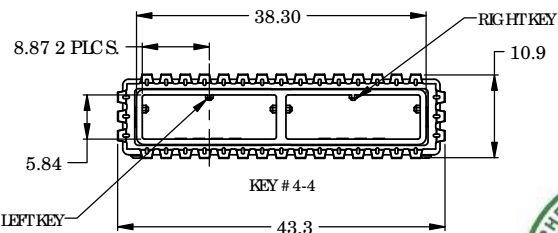


BOTTOM EDGE OF PANEL OPENING
PCB

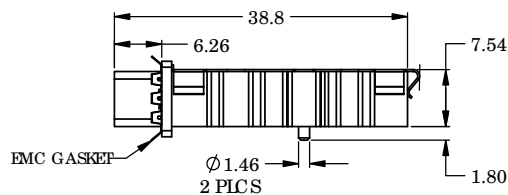
NOTES

DETAIL H
SCALE 16 : 1

- MATERIAL
MAIN CAGE: ZINC DIECAST SHELL WITH 150 MICRONS OF NICKEL PLATING
EMC GASKET: SEE SHEET 1
COVER: STAINLESS STEEL
MOUNTING SCREW: AISI 1010 STEEL
- ROHS COMPLIANT



KEY # 4-4



EMC GASKET



UNLESS SPECIFIED OTHERWISE	DRAWN	ZLJ	LAN 06/09
PRIMARY UNITS MILLIMETERS	CHECKED	ZLJ	JAN 06/09
SECONDARY MILLIMETERS	M.E. APP'D		
REFERENCE IN PARENTHESES	Q.A. APP'D		
GENERAL TOLERANCES	DWG APPR.		
1 DECIMAL PLACE ±0.30	ENG. REL. NO.		
2 DECIMAL PLACES ±0.20	REF.		
3 DECIMAL PLACES ±0.10	THIRD ANGLE PROJECTION		
ANGULAR DEGREES ±1.0°	DO NOT SCALE DRAWING		

Amphenol High Speed Interconnects
A Division of Amphenol Corp. www.amphenol-highspeed.com

MINI SAS "0" DEGREE
2 PORT CAGE

DWG. NO.	REV
P-FS1-SF2-1XXX	AB
CODE ID NO. 03554	DWG. SIZE: C
SCALE: NTS	SHEET 2 OF 2