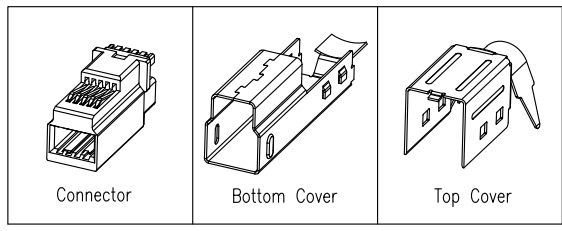


PRELIMINARY RELEASE  
SUBJECT TO CHANGE

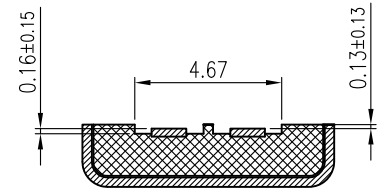
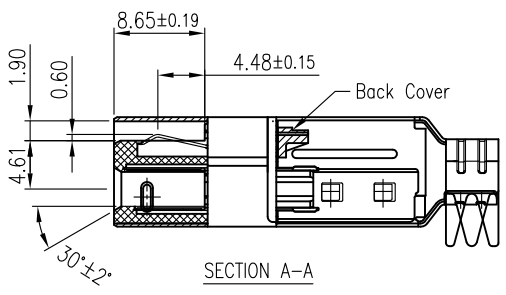
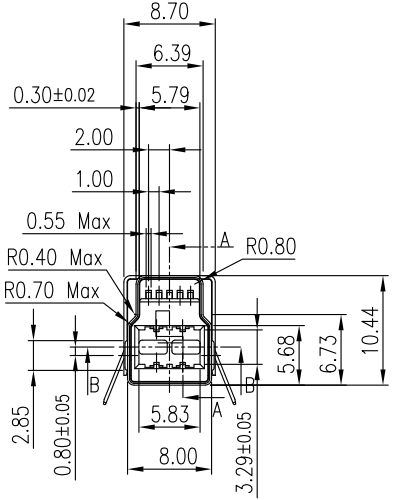
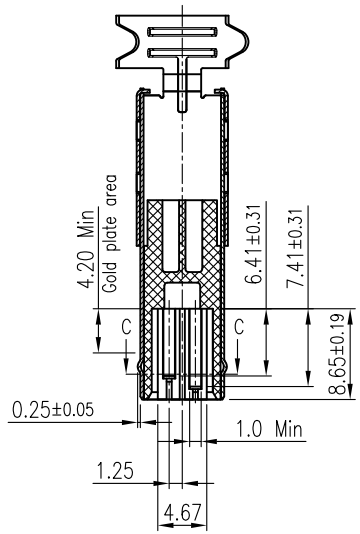
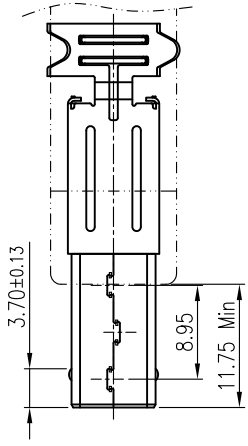
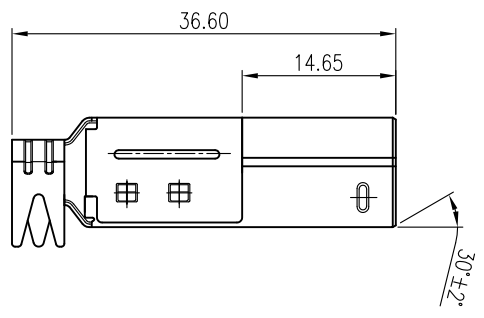
REVISIONS				
SYM	ECN No.	DESCRIPTION	DATE	APPROVED
AX1		NON-RELEASE REVISION	06/18/2010	Roger Tsai

This document is the property of Amphenol Corporation and is delivered on the express condition that is not to be disclosed, reproduced or used, in whole or in part, for manufacture or sale by anyone other than Amphenol Corporation without its prior consent, and that no right is granted to disclose or to use any information in this document.

The marking on this product doesn't contain environmental hazardous materials per Material Specification 55-00259 for Sony GP compliant or per directive 2002/95/EC for RoHS compliant.



Pin Number	Signal Name
1	VBUS
2	D-
3	D+
4	GND
5	StdB_SSTX-
6	StdB_SSTX+
7	GND-DRAIN
8	StdB_SSRX-
9	StdB_SSRX+



- NOTES:**
- MATERIAL:**  
HOUSING: HIGH TEMPERATURE THERMAL PLASTIC, PBT, UL94V-0, COLOR: OPTION.  
TERMINAL A (5P): PHOSPHOR BRONZE.  
TERMINAL B (4P): BRASS  
SHELL: SPCC-CQ1.
  - FINISH:**  
TERMINAL A & TERMINAL B:  
CONTACT AREA: SELECTED GOLD PLATING;  
SOLDERING AREA: TIN PLATING 100 μ" THICKNESS MIN.;  
UNDER PLATING: NICKEL PLATING 50 μ" THICKNESS MIN. OVERALL.  
SHELL:  
NICKEL PLATING 50 μ" THICKNESS MIN. OVERALL.
  - PACKING IS PER AMTA PACKING SPECIFICATION PKS-0001.
  - THIS PRODUCT DOESN'T CONTAIN ENVIRONMENTAL HAZARDOUS PER DIRECTIVE 2002/95/EC FOR RoHS COMPLIANT.

PART NO. GSB3271XXWEU  
CONTACT FINISH | COLOR  
1: GOLD FLASH | 1: BLUE  
2: 5 μ" GOLD | 3: BLACK  
3: 30 μ" GOLD

SECTION C-C  
SCALE 3:1

TOLERANCE		APPROVALS		DATE	TITLE	Amphenol® Amphenol Corporation Amphenol Taiwan Corporation			
X.		DRAWN	Roger Tsai	06/18/2010	USB 3.0 B TYPE PLUG, CABLE MOUNT	PART No. GSB3271XXWEU			
X.X	±0.30	CHECKED	Aqua Chou	06/18/2010					
X.XX	±0.20	APPROVED	Roger Tsai	06/18/2010					
X.XXX	±0.10					UNIT	mm	SIZE	A3
ANGULAR	±1°					SCALE	NA	SHEET	1 OF 1
UNLESS OTHERWISE SPECIFIED		DWG TYPE		PROJECT CODE				DWG No.	GSB3271XXWEU
		CUST DWG		OTHER				REV.	AX1