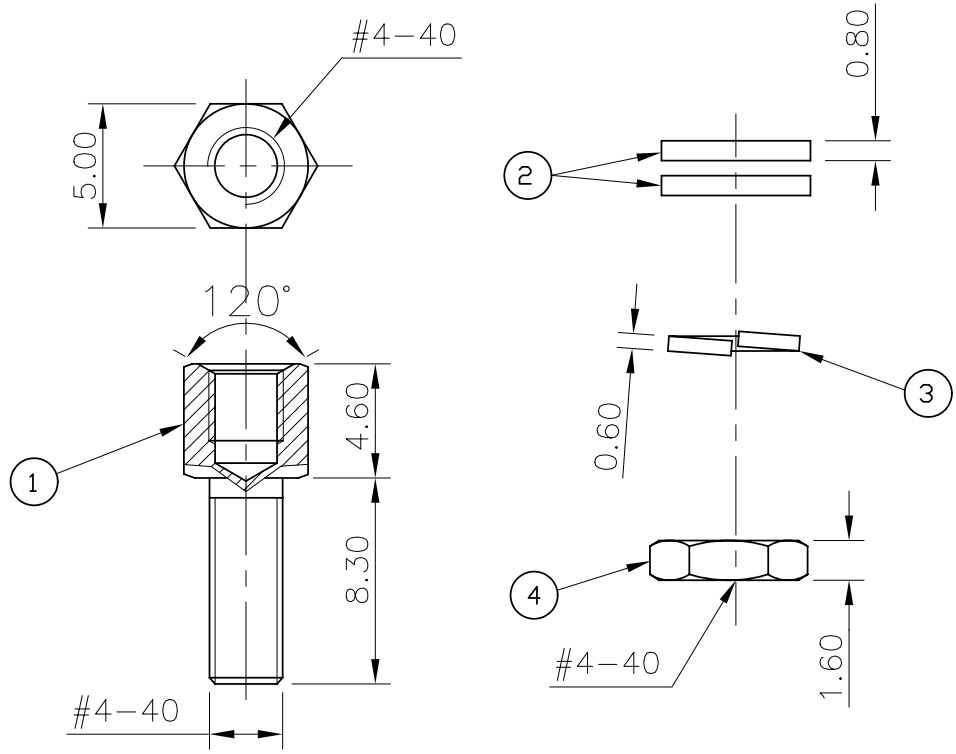


This document is the property of Amphenol Corporation and is delivered on the express condition that it is not to be disclosed, reproduced or used, in whole or in part, for manufacture or sale by anyone other than Amphenol Corporation without its prior consent, & that no right is granted to disclose or to use any information in this document.



- ① SCREW
- ② WASHERS
- ③ LOCK WASHER
- ④ NUT



Customer drawing

REVISIONS				
SYM	ECN	DESCRIPTION	DATE	APPROVED
1			04/25/08	

*D-SUB TECHNICAL DATA*

**MATERIAL:**

Screwlock: Steel,100u" min tin over 50u" min nickel.  
 Washer: Steel,100u" min tin over 50u" min nickel.  
 Lock washer: XC 35  
 Nut: Brass,100u" min tin over 50u" min nickel.

**PACKAGE:**

Delivered separately  
 1 P/N = 10 sets

**MARKING:**

Amphenol...(Series No.) Commercial reference  
 Manufacturing date

UNLESS OTHERWISE SPECIFIED		APPROVAL	DATE	Amphenol®	
TOLERANCES		DRAWN	Christina.cui		04/25/08
	U.S.	METRIC	CHECKED	Hk.wang	04/25/08
.X	+/-	0.50	CHECKED		
.XX	+/-	0.30			
.XXX	+/-	0.20			
FRACTIONS	+/-				
ANGLES	+/-	2'			
FOR MATERIALS AND FINISHES SEE NOTES		DRAWING FILE :		TITLE	
REMOVE SHARP EDGES		ANGLE OF PROJECTION		Accessory, screwlock with nut and washers	
DIMENSIONS				SIZE DRAWING NO.	
U.S.	INCHES			A4	C L17D2041B2TX
METRIC	MM			SCALE	NONE
				REV.	1
				SHEET	1 OF 1