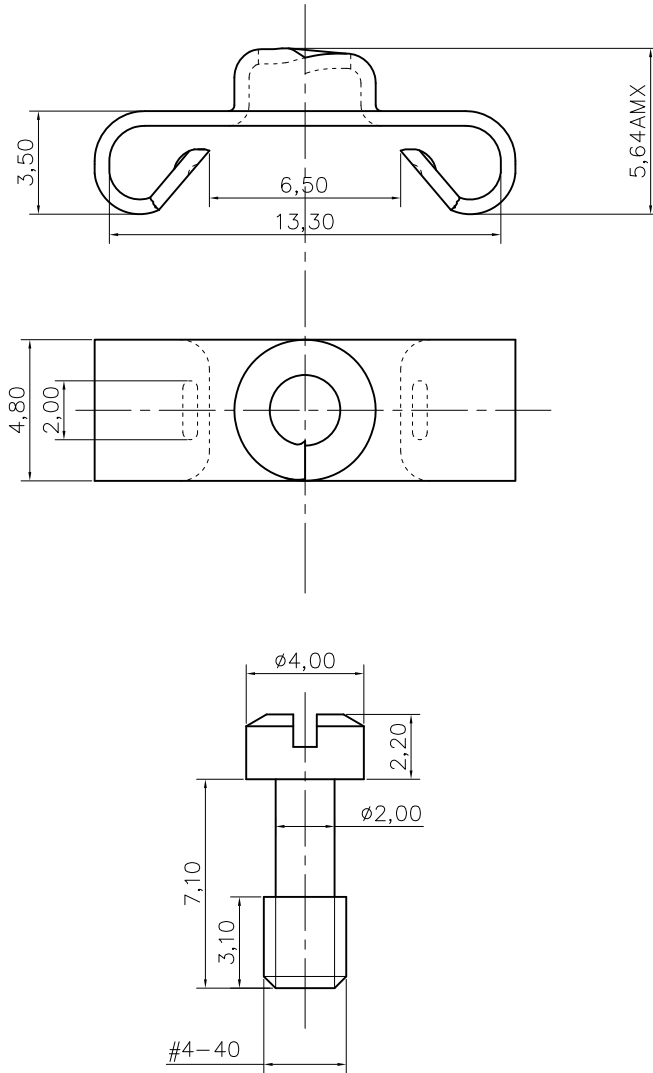


This document is the property of Amphenol Corporation and is delivered on the express condition that it is not to be disclosed, reproduced or used, in whole or in part, for manufacture or sale by anyone other than Amphenol Corporation without its prior consent, & that no right is granted to disclose or to use any information in this document.



Customer drawing



REVISIONS				
SYM	ECN	DESCRIPTION	DATE	APPROVED
1			Mar/04/11	

D-SUB TECHNICAL DATA

MATERIAL : Steel 100u" min tin over 50u" min nickel

PACKAGE : Delivered separately

1 P/N : 10 sets

MARKING : Amphenol...(Series No.)

Commercial reference

Manufacturing date

PRODUCT CODE

L 17D20419EX

L: RoHS Compliance

X: 10 sets

UNLESS OTHERWISE SPECIFIED TOLERANCES		APPROVAL		DATE	Amphenol Amphenol East Asia Limited
U.S.	METRIC	DRAWN	Mar.y.ma	Mar/04/11	
.X +/-	0.50	CHECKED	Wk.wang	Mar/04/11	TITLE Lock Accessory
.XX +/-	0.30	CHECKED			
.XXX +/-	0.20	DRAWING FILE :			SIZE DRAWING NO. A4 C L17D20419EX
FRACTIONS +/-	2'	ANGLE OF PROJECTION			
ANGLES +/-		REMOVE SHARP EDGES			SCALE NONE SHEET 1 OF 1
FOR MATERIALS AND FINISHES SEE NOTES		DIMENSIONS			
U.S. INCHES		METRIC MM			REV. 1