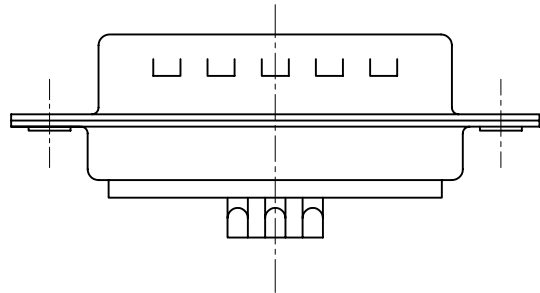
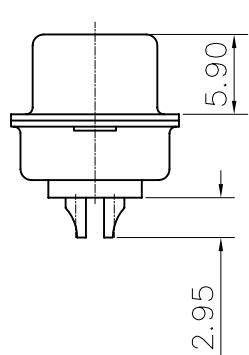
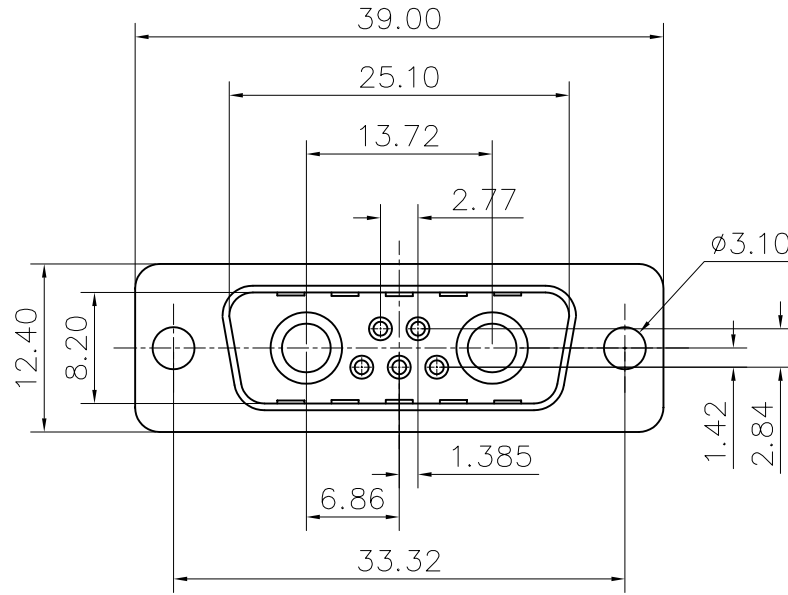


This document is the property of Amphenol Corporation and is delivered on the express condition that it is not to be disclosed, reproduced or used, in whole or in part, for manufacture or sale by anyone other than Amphenol Corporation without its prior consent, & that no right is granted to disclose or to use any information in this document.



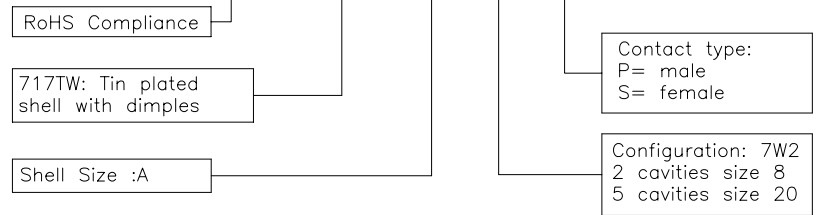
REVISIONS				
SYM	ECN	DESCRIPTION	DATE	APPROVED
A			05/31/07	

D-SUB TECHNICAL DATA

SHELL :Steel 2.5um(100u") min tin over 1.25um(50u") min nickel
 BODY : Glass filled thermoplastic.
 Flame retardant to UL94 V-0
 Color Black
 CONTACT: brass, 0.4um (16u") gold over 1.25um(50u") min Nickel
 ELECTRICAL : Voltage rating 300 V RMS at 50 Hz
 Current rating 10 to 40A
 Withstanding Voltage >1000 V RMS at 50 Hz for one minute
 Insulation resistance >5000 M Ohms
 Contact resistance 20 mOhms max.
 CLIMATIC : Temperature range -55 °C up to 155°C
 Damp heat 56 days(40 °C-95% HR)
 MARKING : Amphenol-...(Series No.)
 Commercial reference
 Manufacturing date

PRODUCT CODE

L 717TW A 7W2 P



UNLESS OTHERWISE SPECIFIED TOLERANCES	U.S.	METRIC	DRAWN	Lisa peng	6/30/07
	.X +/-	0.50	CHECKED	tk.wang	6/30/07
	.XX +/-	0.30	CHECKED		
	.XXX +/-	0.20			
	FRACTIONS +/-				
	ANGLES +/-	2°			
FOR MATERIALS AND FINISHES SEE NOTES	DRAWING FILE : PE master/drawing/Dsub		APPROVAL		
REMOVE SHARP EDGES	ANGLE OF PROJECTION		DATE		
DIMENSIONS	U.S. INCHES		TITLE		
	METRIC MM		Hybrid connector, TW series		
			SIZE	DRAWING NO.	REV.
			A4	L717TW A7W2P	A
	SCALE	NONE	SHEET 1 OF 1		

Amphenol

TITLE		
Hybrid connector, TW series		
SIZE	DRAWING NO.	REV.
A4	L717TW A7W2P	A
SCALE	NONE	SHEET 1 OF 1