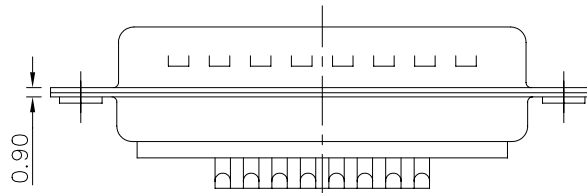
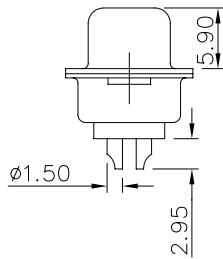
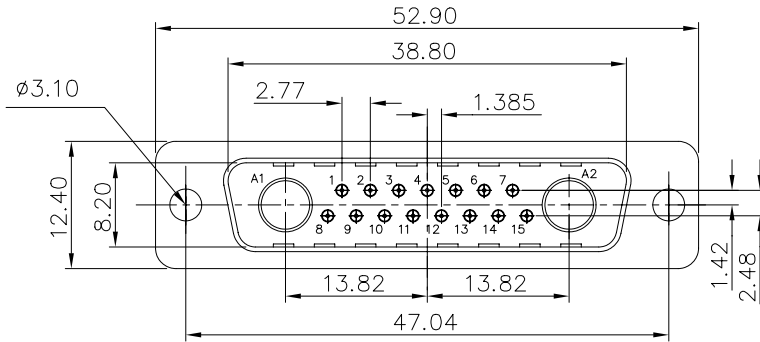


This document is the property of Amphenol Corporation and is delivered on the express condition that it is not to be disclosed, reproduced or used, in whole or in part, for manufacture or sale by anyone other than Amphenol Corporation without its prior consent, & that no right is granted to disclose or to use any information in this document.



Customer drawing

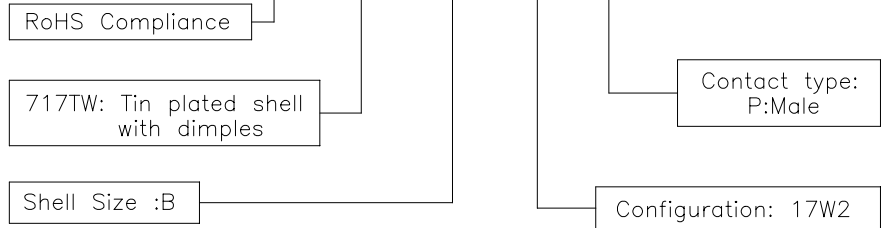
REVISIONS				
SYM	ECN	DESCRIPTION	DATE	APPROVED
A			12/19/07	

D-SUB TECHNICAL DATA

SHELL : Steel, 100u" min tin over 50u" min nickel
 BODY : Glass filled thermoplastic.
 Flame retardant to UL94 V-0 Color Black
 CONTACTS : Brass, 0.4um(15u") min gold over 1.25um(50u") min nickel
 ELECTRICAL : Voltage rating: Signal contacts 300 V Rms to 50 Hz
 Current rating: Signal contacts 7.5A
 Withstanding Voltage >1000 V Rms to 50 Hz for one minute
 Insulation resistance >5000 M Ohms
 Contact resistance: Signal contacts 20 mOhms max
 CLIMATIC : Temperature range -55 °C up to 155°C
 Damp heat 56 days(40 °C-95% HR)
 MARKING : Amphenol...(Series No.)
 Commercial reference
 Manufacturing date

PRODUCT CODE

L 717TW B 17W2 P



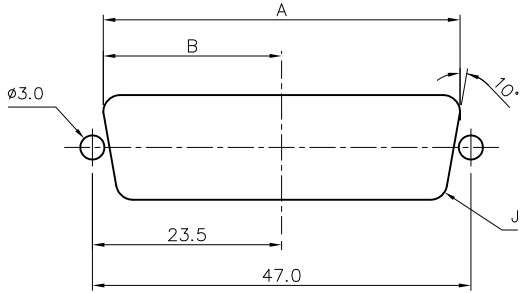
UNLESS OTHERWISE SPECIFIED TOLERANCES		APPROVAL	DATE
	U.S. METRIC	DRAWN Christine.cui	12/19/07
.X	+/- 0.50	CHECKED lik.wang	12/19/07
.XX	+/- 0.30	CHECKED	
.XXX	+/- 0.20		
FRACTIONS	+/-		
ANGLES	+/- 2'		
FOR MATERIALS AND FINISHES SEE NOTES		DRAWING FILE :	
REMOVE SHARP EDGES		ANGLE OF PROJECTION	
DIMENSIONS			
U.S.	INCHES		
METRIC	MM		

<i>Amphenol</i>		
TITLE		
Hybrid contacts, TW series		
SIZE	DRAWING NO.	REV.
A4	C L717TWB17W2P	A
SCALE	NONE	SHEET 1 OF 1

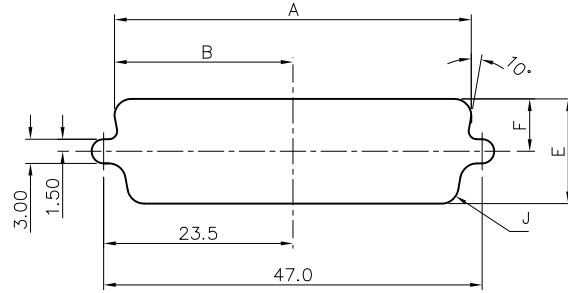
This document is the property of Amphenol Corporation and is delivered on the express condition that it is not to be disclosed, reproduced or used, in whole or in part, for manufacture or sale by anyone other than Amphenol Corporation without its prior consent, & that no right is granted to disclose or to use any information in this document.



Optimal cutout for rear mounting



Standard cutout



Shell size	Mounting method	A	B	E	F	J
B	Front	44.3	22.1	13.0	6.5	2.1
	Rear	42.5	21.3	11.4	5.7	3.4

REVISIONS				
SYM	ECN	DESCRIPTION	DATE	APPROVED
1			Sep/22/11	

Customer drawing for proposal

UNLESS OTHERWISE SPECIFIED TOLERANCES U.S. METRIC .X +/- 0.50 .XX +/- 0.30 .XXX +/- 0.20 FRACTIONS +/- 2' ANGLES +/- FOR MATERIALS AND FINISHES SEE NOTES REMOVE SHARP EDGES DIMENSIONS U.S. INCHES METRIC MM	APPROVAL DRAWN Maryme CHECKED Tony tang CHECKED	DATE Sep/22/11 Sep/22/11
	DRAWING FILE :	
	ANGLE OF PROJECTION	

Amphenol Amphenol East Asia Limited	
TITLE Hybrid contacts, TW series	
SIZE A4	DRAWING NO. Panel cutout for 25 pin
SCALE NONE	REV. 1
SHEET 1 OF 1	