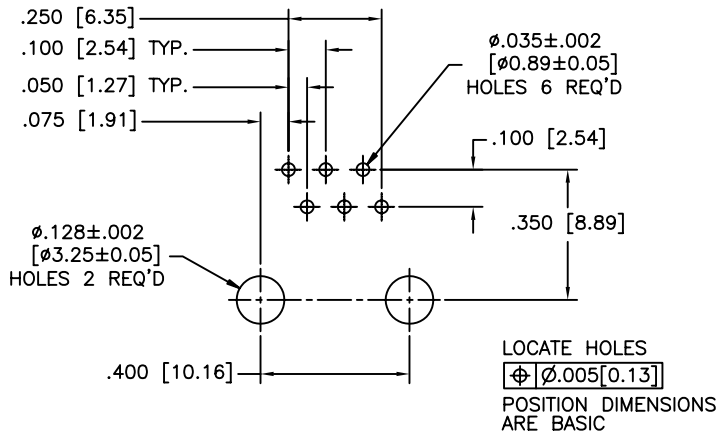
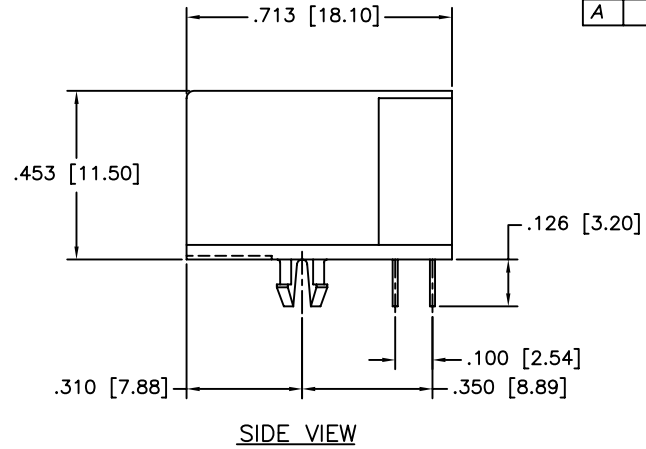
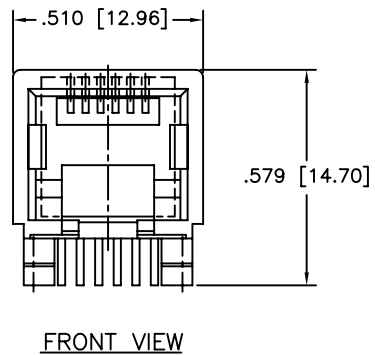
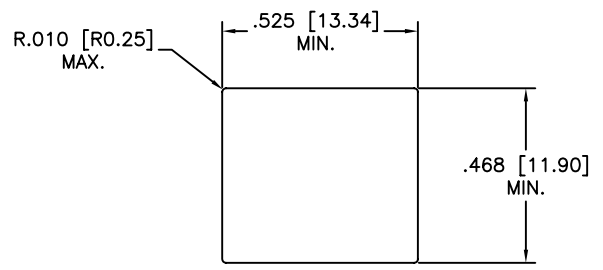


REVISIONS				
SYM	ZONE	ECN, ERN NO.	DATE	APPRD.
A		PROPOSAL	05/12/22	LCHAN



**RECOMMENDED P.C.B. LAYOUT**  
(COMPONENT SIDE OF BOARD)



**RECOMMENDED PANEL CUTOUT**

**MATERIALS:**

PLASTIC HOUSING: HIGH TEMPERATURE THERMOPLASTIC  
FLAMMABILITY RATING UL94V-0

**CONTACTS:**

PHOSPHOR BRONZE  
PLATING: REFER PART NUMBER FOR GOLD THICKNESS ON MATING SURFACES.  
50 μ" [1.27 MICRONS] MIN. NICKEL UNDERPLATE.  
100 μ" [2.54 MICRONS] MIN. MATTE TIN OR GOLD FLASH ON CONTACT TAILS.

**PART NUMBER: RJE05-166-0X10**

- GOLD PLATING**
- 1 = 6 μINCH
  - 2 = 15 μINCH
  - 3 = 30 μINCH
  - 4 = 50 μINCH

THIS DOCUMENT CONTAINS PROPRIETARY INFORMATION AND SUCH INFORMATION MAY NOT BE DISCLOSED TO OTHERS FOR ANY PURPOSE OR USED FOR MANUFACTURING PURPOSES WITHOUT WRITTEN PERMISSION FROM AMPHENOL CANADA CORP.

DRAWN <i>Chigow</i>	DATE 05/12/22
DESIGNED	
CHECKED <i>PAULW</i>	DATE 05/12/22
I. E. APPRD.	
Q. A. APPRD.	
DWG. APPRD.	
ENG. REL. NO.	
REF.	
DIMENSIONS ARE IN	CODE ID. NO.
mm	03554

<b>Amphenol Canada Corp.</b>	
TITLE RJE05 SERIES MODULAR JACK, 6 POSITION, 6 CONTACTS, UNSHIELDED, ULTRA LOW PROFILE-ROHS COMPLIANT	
DWG. DRAWING NO.	REV.
P-RJE05-166-0X10	A
SCALE	WT. _____ SURF. _____ SHEET 1 OF 1