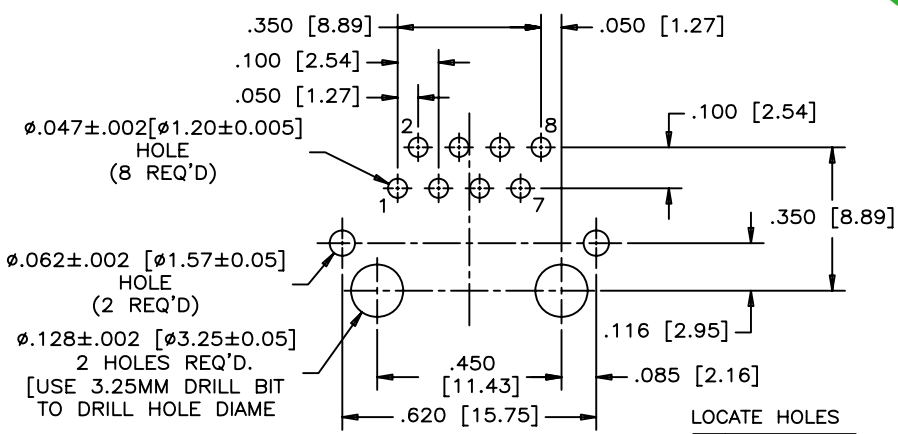
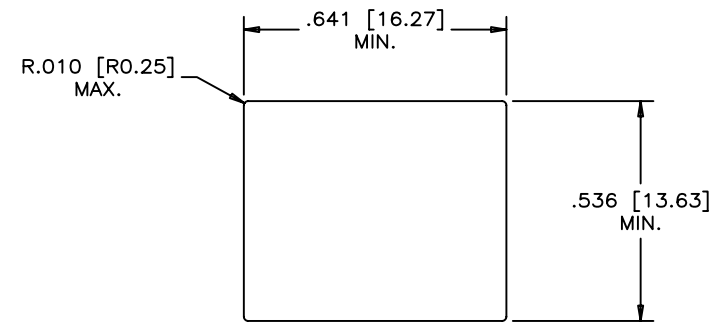
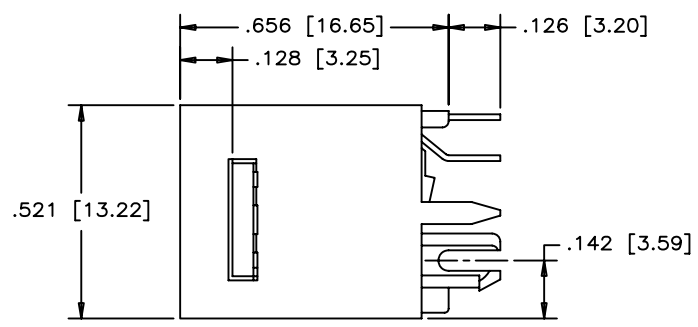
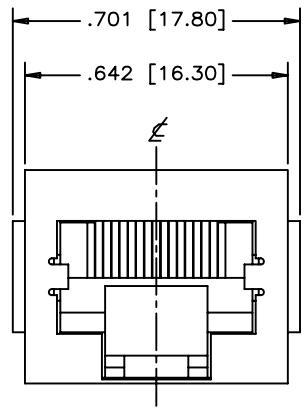


REVISIONS				
SYM	ZONE	ECN, ERN NO.	DATE	APPRD.
B		PROPOSAL	MAY15/06	LCHAN
C		PROPOSAL	JUN19/08	LCHAN



RECOMMENDED P.C.B. LAYOUT
(COMPONENT SIDE OF BOARD)

LOCATE HOLES
 $\varnothing \pm 0.005 [0.13]$
 HOLE POSITIONS
 ARE BASIC

$\varnothing .047 \pm .002 [ø1.20 \pm 0.005]$
HOLE
(8 REQ'D)

$\varnothing .062 \pm .002 [ø1.57 \pm 0.05]$
HOLE
(2 REQ'D)

$\varnothing .128 \pm .002 [ø3.25 \pm 0.05]$
2 HOLES REQ'D.
[USE 3.25MM DRILL BIT
TO DRILL HOLE DIAME

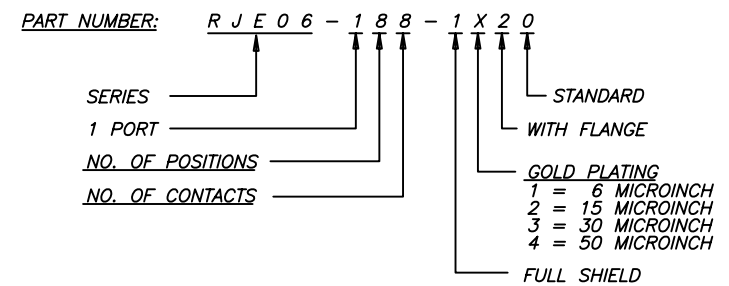
MATERIALS:

HOUSING: ENGINEERING THERMOPLASTIC
FLAMMABILITY RATING UL94V-0
COLOR: BLACK

CONTACTS: PHOSPHOR BRONZE

PLATING: REFER TO PART NUMBER FOR GOLD THICKNESS
ON MATING SURFACE
50 MICROINCH [1.27 MICRONS] MIN. NICKEL OVERALL
100 MICROINCH [2.54 MICRONS] MIN. MATTE-TIN
OR GOLD FLASH OVER TAIL

SHIELD: COPPER ALLOY WITH NICKEL PLATED



DRAWN PAULW	DATE MAY15/06
DESIGNED	
CHECKED CHIGOW	DATE MAY15/06
I. E. APPRD.	
Q. A. APPRD.	
DWG. APPRD.	
ENG. REL. NO.	
REF. EAR # A060504	
DIMENSIONS ARE IN INCHES [mm]	CODE ID. NO. 03554

Amphenol Canada Corp.			
TITLE RJE06 SERIES, 8 POSITION 8 CONTACT, VERTICAL MOUNT, WITH SHIELD, AND FLANGE - RoHS COMPLIANT			
DWG	DRAWING NO.	REV.	
	P-RJE06-188-1X20	C	
SCALE	WT.	SURF.	SHEET 1 OF 1

THIS DOCUMENT CONTAINS PROPRIETARY INFORMATION AND SUCH INFORMATION
MAY NOT BE DISCLOSED TO OTHERS FOR ANY PURPOSE OR USED FOR MANUFACTURING
PURPOSES WITHOUT WRITTEN PERMISSION FROM AMPHENOL CANADA CORP.