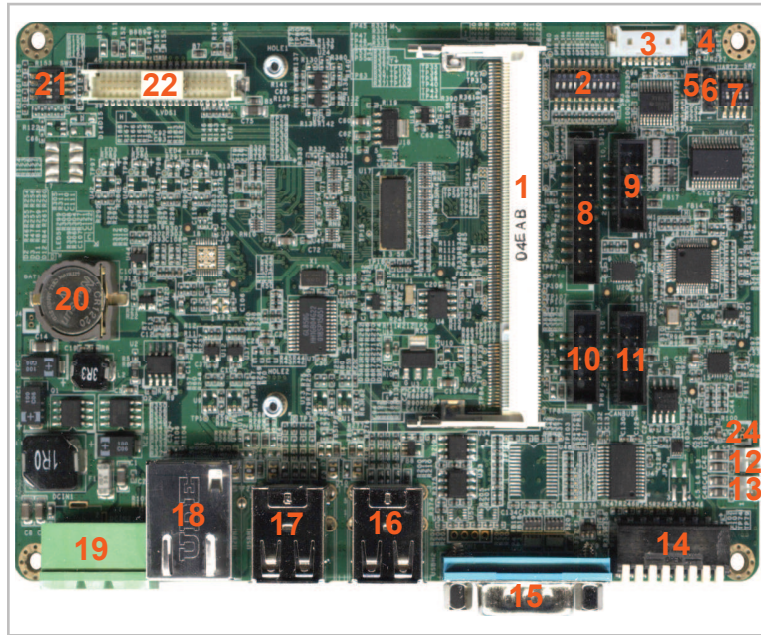


# Thb-3517

## Interface Base Board for TAM-3517 Series



Complete of the shelf solution for Human Machine Interface (HMI) applications.

LAN, CAN bus, RS-232, RS-422/485, SPI, I<sup>2</sup>C, GPIO to manage and monitor external devices.

24 bit LVDS connector to connect to LCD panels with or without touch screens.

### System

System on module      Compatible with TAM-3517 by a 200 pin SO-DIMM connector (1) backed up with coin battery (20)

RTC

### Interfaces

Connectors      LAN connector (18)  
 4x standard USB host ports (16, 17)  
 1x RS-232/422/485 (15)  
 8x DIP switch (14)  
 micro-SD card slot (bottom)

On-board connector      LVDS connector (22)  
 microphone (24)  
 2W amplified speaker (12, 13)

Expansion header      Touch interface (3) (order option)  
 GPIO for Keypad (10) (order option)  
 CAN bus (11)  
 RS-232 (9)  
 SPI, I<sup>2</sup>C, GPIO (8)  
 UART (5, 6)

### Power

Input power      12 VDC (Combicon MSTB 2.5) (19) (with locking screws)

### Environmental and Mechanical

Temperature      Commercial: 0° ~ 60°C  
 Industrial: -40 ~ 85 °C

Humidity      10-90%

Dimensions      147 x 102 mm (5¾ x 4 inch)

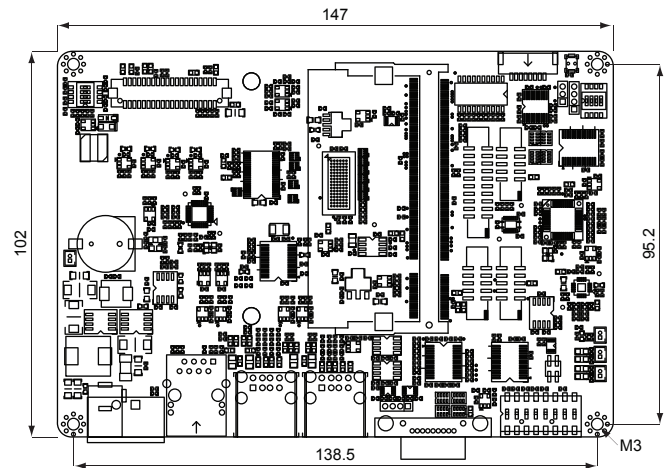
Weight      92 grams

Shock      50G / 25ms

Vibration      20G / 0-600 Hz

### Dimensions

units in mm



### Order Information

THB-3517	HMI base board for TAM-3517
THB-3517-i	HMI base board for TAM-3517 with industrial temperature specifications (MOQ's apply)

### Options

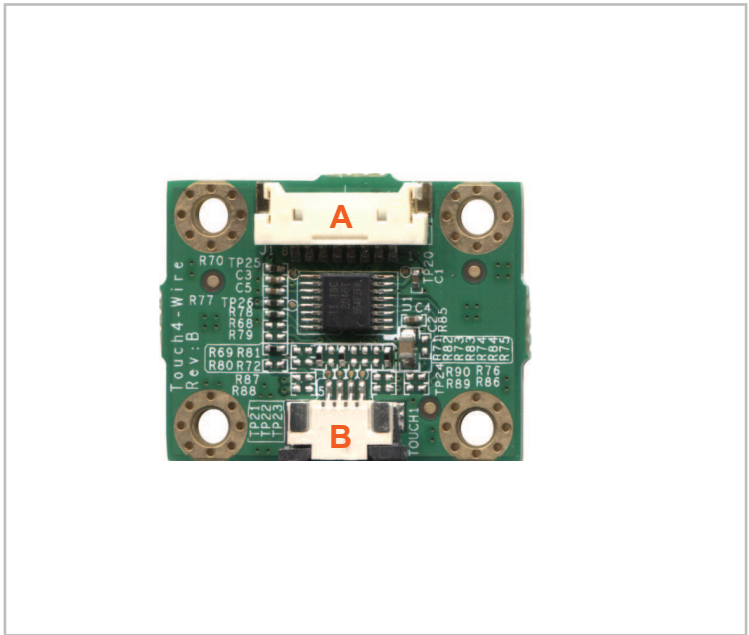
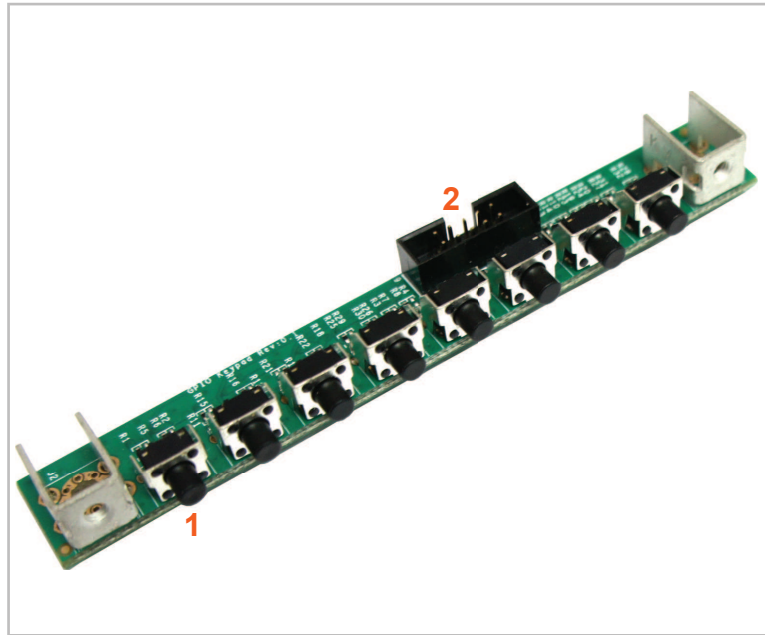
4-wire touch PCB	4-wire touch controller for Thb-3517
Keypad PCB	8 button GPIO Keypad



## TechNexion

Phone: +886-2-8227-3585  
 E-mail: sales@technexion.com  
 Web: http://www.technexion.com





### System

Keypad PCB      Compatible with THB-3517 by a 10 pin dual row box header (2)

### Interfaces

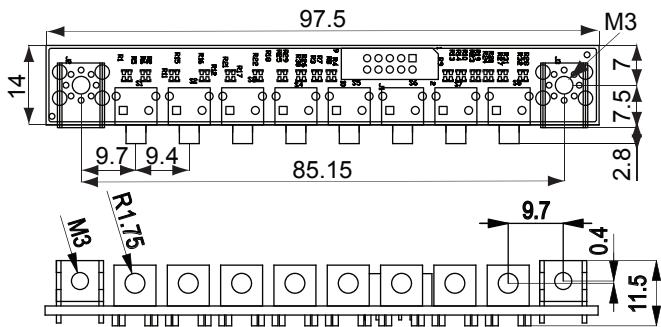
Buttons      8 tact switches (1)  
Mounting      2 x M3 terminal  
Expansion header      10 pin dual row 2.0mm box header(2)

### Environmental and Mechanical

Temperature      Commercial: -40° to 85° C  
Humidity      10-90%  
Dimensions      97.5 x 17.3 mm (3¾ x ⅝ inch)  
Weight      10 grams  
Shock      50G / 25ms  
Vibration      20G / 0-600 Hz

### Dimensions

units in mm



### System

4-wire touch PCB      Compatible with THB-3517 by a 8 pin connector (A)

### Interfaces

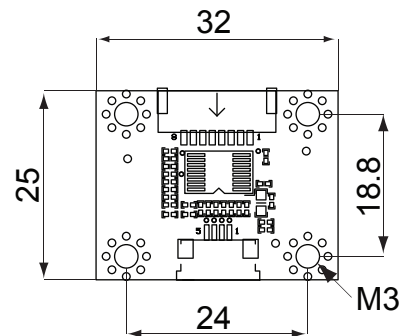
Connectors      4-wire FPC connector (B)  
8 pin Molex PanelMate 1.25mm (A)

### Environmental and Mechanical

Temperature      Commercial: -40° to 85° C  
Humidity      10-90%  
Dimensions      32 x 25 mm (1¼ x 1 inch)  
Weight      5 grams  
Shock      50G / 25ms  
Vibration      20G / 0-600 Hz

### Dimensions

units in mm



# TechNexion

Phone: +886-2-8227-3585  
E-mail: sales@technexion.com  
Web: http://www.technexion.com

