



0.8*1.2mm Pin Header SMT S/T (Stack) Type

MATERIAL

Insulator : High Temperature Polyester
Contact Pin : Brass

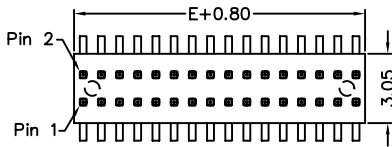
SPECIFICATION

Current Rate : 1 AMP
Insulation Resistance : 5000MΩMin. at DC 500V
Contact Resistance : 15mΩMax. at DC 100mA
Operation Temperature : -40°C to + 105°C

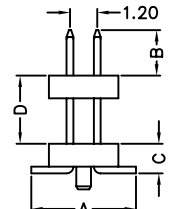
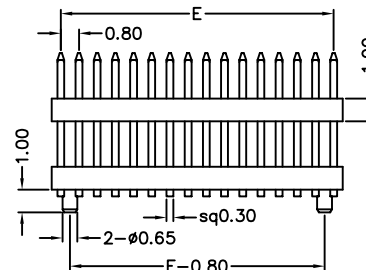
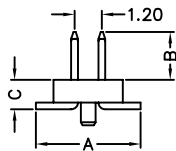
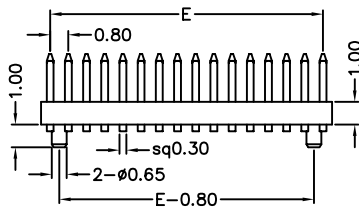
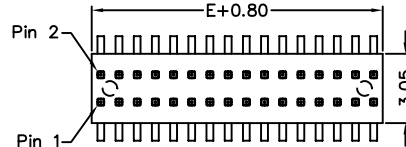


Detail Dimensions

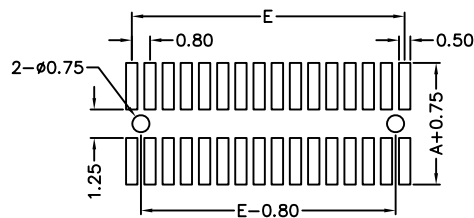
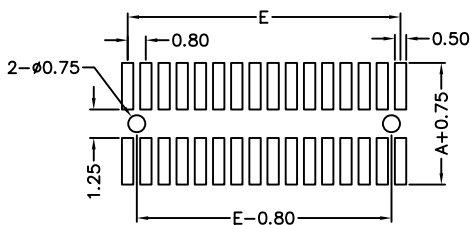
262-92-xxGBxx



265-92-xxGBxx



Recommended P.C.B Layout



Order Information

26 x -92- xx G B xx
1 2 3 4

Standard Parts	DIM A	DIM B	DIM C
262-92-xxGB02	4.60	2.00	1.30

- 2: SMT S/T Type
5: SMT S/T Stack Type
- No. of contacts per row
- G: Gold Flash
S: Selective Gold Plating
- Pinrex internal code

If you need other dimensions, please fill out DIM A/B/C/D and contact our sales representatives.

DIM A	DIM B	DIM C	DIM D

Number Of Contacts

Unit: mm

Poles	DIM E	Poles	DIM E	Poles	DIM E	Poles	DIM E	Poles	DIM E	Poles	DIM E	Poles	DIM E	Poles	DIM E
		8	5.60	15	11.20	22	16.80	29	22.40	36	28.00	43	33.60	50	39.20
3	1.60	9	6.40	16	12.00	23	17.60	30	23.20	37	28.80	44	34.40		
4	2.40	10	7.20	17	12.80	24	18.40	31	24.00	38	29.60	45	35.20		
5	3.20	11	8.00	18	13.60	25	19.20	32	24.80	39	30.40	46	36.00		
6	4.00	12	8.80	19	14.40	26	20.00	33	25.60	40	31.20	47	36.80		
7	4.80	13	9.60	20	15.20	27	20.80	34	26.40	41	32.00	48	37.60		
		14	10.40	21	16.00	28	21.60	35	27.20	42	32.80	49	38.40		