



# 1.78mm Pin Header Straight Type

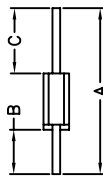
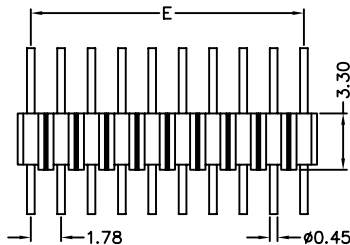
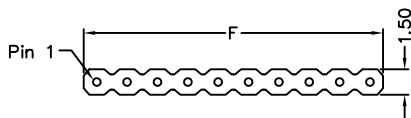
## MATERIAL

Insulator : NY66 with 30% Glass fiber  
Contact Pin : Brass

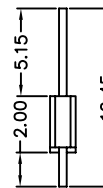
## SPECIFICATION

Current Rate : 3 AMP  
Withstanding Voltage : AC 500V for one minute  
Insulation Resistance : 5000M $\Omega$ Min. at DC 500V  
Contact Resistance : 20m $\Omega$ Max. at DC 100mA  
Operation Temperature : -40°C to + 105°C

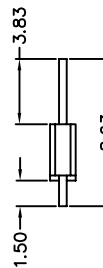
## Detail Dimensions



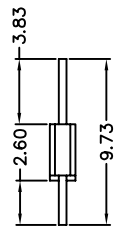
Code 01



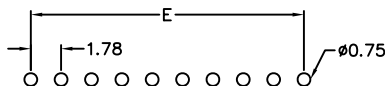
Code 02



Code 03



## Recommended P.C.B Layout



## Order Information

270-81 - xx G B xx  
          1 2 3

- No. of contacts per row (5/6/10 ways available)
- G: Gold Flash  
S: Selective Gold Plating
- Pinrex internal code

If you need other dimensions and positions, please fill out DIM A/B/C and contact our sales representatives.

DIM A	DIM B	DIM C

## Number Of Contacts

Unit: mm

Poles	DIM E	DIM F	Poles	DIM E	DIM F	Poles	DIM E	DIM F	Poles	DIM E	DIM F	Poles	DIM E	DIM F
5	7.12	8.65												
6	8.90	10.43												
10	16.02	17.55												