



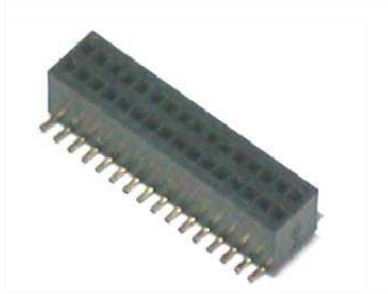
0.8x1.2mm Female Header SMT Type H=3.0mm

MATERIAL

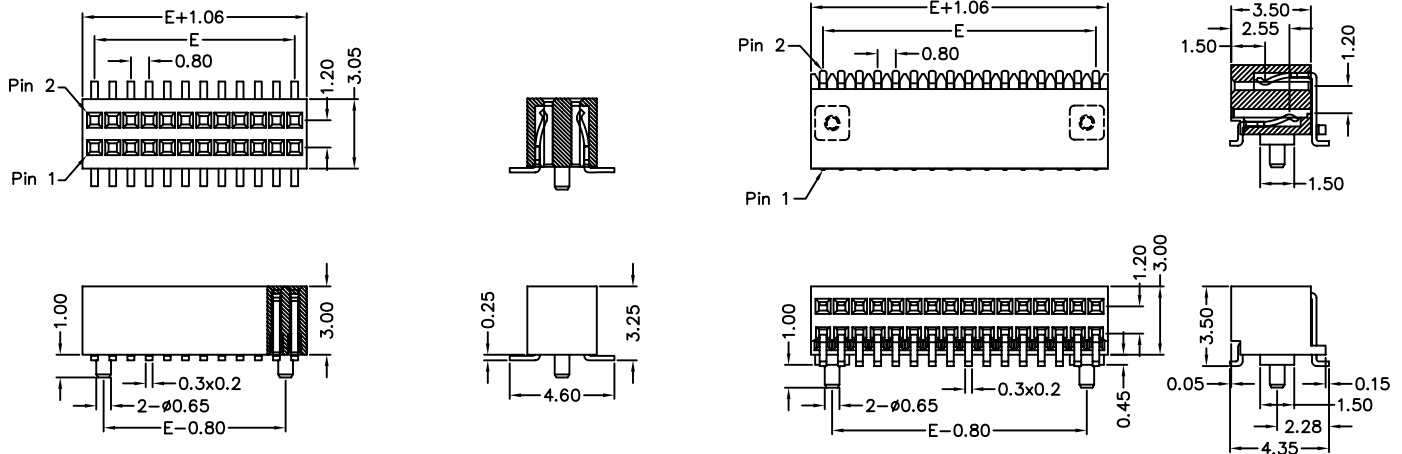
Insulator : High Temperature Polyester
Contact Pin : Phosphor Bronze

SPECIFICATION

Current Rate : 0.75 AMP
Insulation Resistance : 5000MΩMin.
Contact Resistance : 15mΩMax.
Operation Temperature : -40°C to + 105°C



Detail Dimensions



Recommended P.C.B Layout



Order Information

66x-x 2 - xx G B xx
1 2 3 4

1. 0: SMT Straight Type
- 3: SMT Side Entry Type
2. 7: Green Product
- 9: Green Product High Temp
3. No. of contacts per row
4. Pinrex internal code

Standard Parts
660-x2-xxGB02
663-x2-xxGB02

Number Of Contacts

Unit: mm

Poles	DIM E	Poles	DIM E	Poles	DIM E	Poles	DIM E	Poles	DIM E	Poles	DIM E	Poles	DIM E	Poles	DIM E
		8	5.60	15	11.20	22	16.80	29	22.40	36	28.00	43	33.60	50	39.20
3	1.60	10	7.20	16	12.00	23	17.60	30	23.20	37	28.80	44	34.40		
4	2.40	11	8.00	17	12.80	24	18.40	31	24.00	38	29.60	45	35.20		
5	3.20	12	8.80	18	13.60	25	19.20	32	24.80	39	30.40	46	36.00		
6	4.00	13	9.60	19	14.40	26	20.00	33	25.60	40	31.20	47	36.80		
7	4.80	14	10.40	20	15.20	27	20.80	34	26.40	41	32.00	48	37.60		
				21	16.00	28	21.60	35	27.20	42	32.80	49	38.40		