



1.27x1.27mm Female Header SMT Type H=2.15mm

MATERIAL

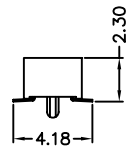
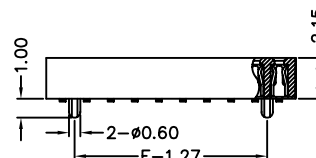
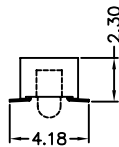
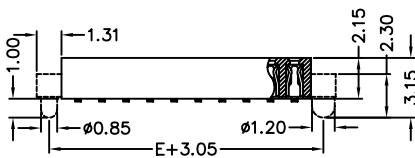
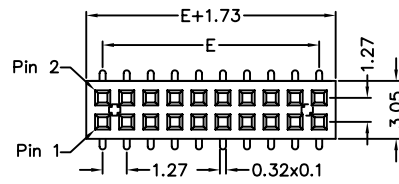
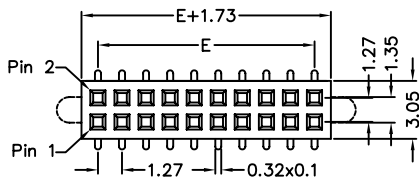
Insulator : High Temperature Polyester
Contact Pin : Phosphor Bronze

SPECIFICATION

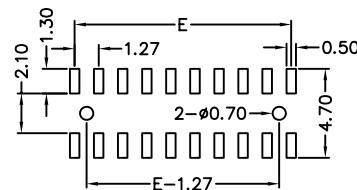
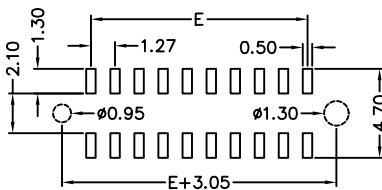
Current Rate : 1 AMP
Insulation Resistance : 5000MΩMin. at DC 500V
Contact Resistance : 20mΩMax. at DC 100mA
Operation Temperature : -40°C to + 105°C



Detail Dimensions



Recommended P.C.B Layout



Order Information

632-x 2 - xx G B xx
1 2 3

- 7: Green Product
9: Green Product High Temp
- No. of contacts per row
- Pinrex internal code

| Standard Parts | Type |
|----------------|---------------|
| 632-x2-xxGB00 | without posts |
| 632-x2-xxGB01 | side posts |
| 632-x2-xxGB02 | bottom posts |

Number Of Contacts

Unit: mm

| Poles | DIM E | Poles | DIM E | Poles | DIM E | Poles | DIM E | Poles | DIM E | Poles | DIM E | Poles | DIM E | Poles | DIM E |
|-------|-------|-------|-------|-------|-------|-------|-------|-------|-------|-------|-------|-------|-------|-------|-------|
| | | 8 | 8.89 | 15 | 17.78 | 22 | 26.67 | 29 | 35.56 | 36 | 44.45 | 43 | 53.34 | 50 | 62.23 |
| 3 | 2.54 | 10 | 11.43 | 17 | 20.32 | 24 | 29.21 | 31 | 38.10 | 38 | 46.99 | 45 | 55.88 | | |
| 4 | 3.81 | 11 | 12.70 | 18 | 21.59 | 25 | 30.48 | 32 | 39.37 | 39 | 48.26 | 46 | 57.15 | | |
| 5 | 5.08 | 12 | 13.97 | 19 | 22.86 | 26 | 31.75 | 33 | 40.64 | 40 | 49.53 | 47 | 58.42 | | |
| 6 | 6.35 | 13 | 15.24 | 20 | 24.13 | 27 | 33.02 | 34 | 41.91 | 41 | 50.80 | 48 | 59.69 | | |
| 7 | 7.62 | 14 | 16.51 | 21 | 25.40 | 28 | 34.29 | 35 | 43.18 | 42 | 52.07 | 49 | 60.96 | | |