



Test Pin Terminal Turret

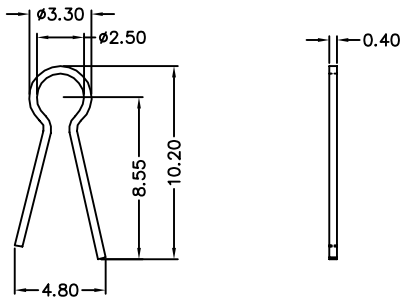
■ MATERIAL

Contact : Brass / Phosphor Bronze
Plating : Tin / Gold Flash

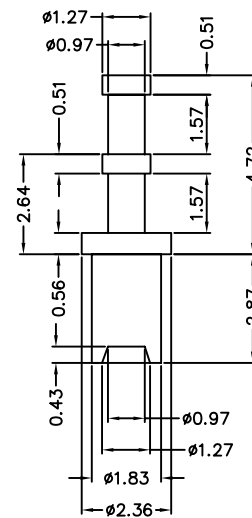


■ Detail Dimensions

999-60 - 110045



999-60 - 710004



■ Order Information

999-60 - xx 00 xx
1 2

Standard Parts
999-60-110045
999-60-710004

1. 11: Test Pin
71: Terminal Turret
2. Pinrex internal code

Note : OEM/ODM projects are welcome for Test Pin and Terminal Turret

Unit: mm