



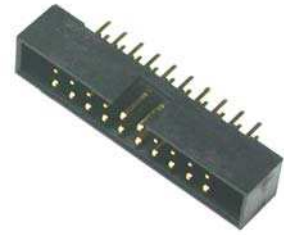
# 2.0mm Box Header Straight (Elevated) Type

## MATERIAL

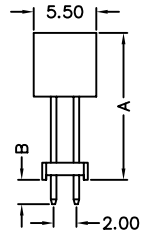
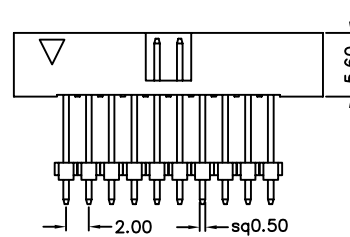
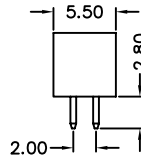
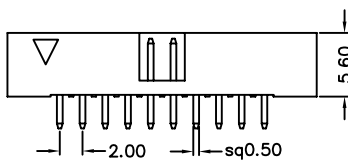
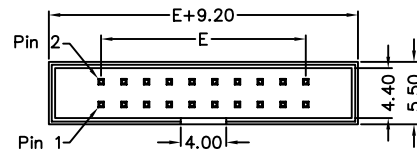
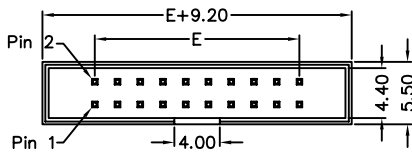
Insulator : High Temperature Polyester  
Contact Pin : Brass

## SPECIFICATION

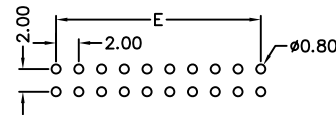
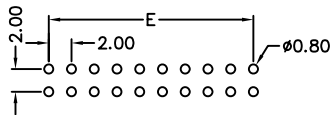
Current Rate : 1 AMP  
Insulation Resistance : 5000MΩMin. at DC 500V  
Contact Resistance : 20mΩMax. at DC 100mA  
Operation Temperature : -40°C to +105°C



## Detail Dimensions



## Recommended P.C.B Layout



## Order Information

52x-x 0 - xx G B xx  
1 2 3 4 5

Standard Parts  
520-x0-xxGB00

- 1. 0: Straight Type
- 6: Straight Elevated Type
- 2. 7: Green Product
- 9: Green Product High Temp
- 3. No. of contacts
- 4. G: Gold Flash
- S: Selective Gold Plating
- T: Tin Plating

5. Pinrex internal code

If you need other dimensions please fill out DIM A/B and contact our sales representatives.

DIM A	DIM B

## Number Of Contacts

Unit: mm

Poles	DIM E	Poles	DIM E	Poles	DIM E	Poles	DIM E								
		18	16.00	32	30.00	64	62.00								
6	4.00	20	18.00	34	32.00	68	66.00								
8	6.00	22	20.00	36	34.00										
10	8.00	24	22.00	40	38.00										
12	10.00	26	24.00	44	42.00										
14	12.00	28	26.00	50	48.00										
16	14.00	30	28.00	60	58.00										