



1.25mm Wire to Board Header Straight (R/A) Type

MATERIAL

Insulator : Polyester
Contact Pin : Brass

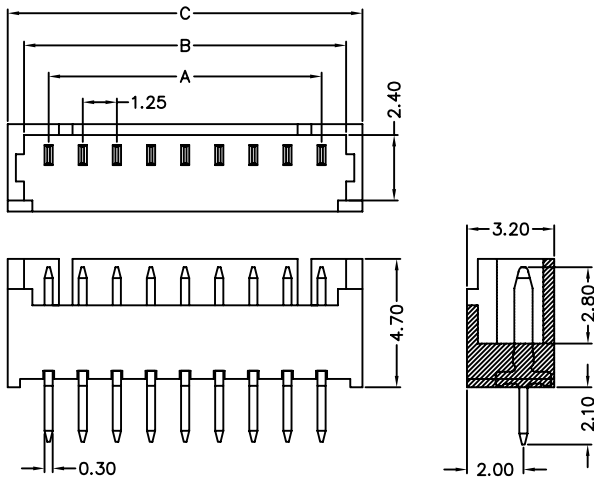
SPECIFICATION

Current Rate : 1 AMP
Insulation Resistance : 500MΩ MIN.
Contact Resistance : 20mΩMax.
Operation Temperature : -25°C to +85°C

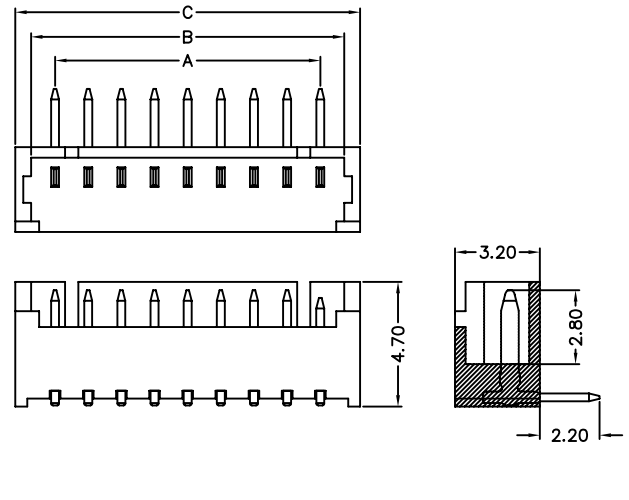


Detail Dimensions

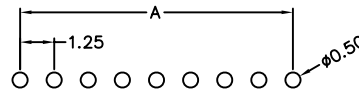
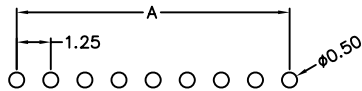
712-71-xxTW01



712-72-xxTW01



Recommended P.C.B Layout



Order Information

712-7 x - xx T W xx
1 2 3 4 5

1. 1: Straight type
2: Right Angle type
2. No. of contacts
3. T: Tin Plating
4. W: White Insulator
5. Pinrex internal code

| Standard Parts | Type |
|----------------|-------------|
| 712-71-xxTW01 | Straight |
| 712-72-xxTW01 | Right Angle |

Number Of Contacts

Unit: mm

| Poles | DIM A | DIM B | DIM C | Poles | DIM A | DIM B | DIM C | | | | | | | |
|-------|-------|-------|-------|-------|-------|-------|-------|--|--|--|--|--|--|--|
| 2 | 1.25 | 3.15 | 4.25 | 9 | 10.00 | 11.90 | 13.00 | | | | | | | |
| 3 | 2.50 | 4.40 | 5.50 | 10 | 11.25 | 13.15 | 14.25 | | | | | | | |
| 4 | 3.75 | 5.65 | 6.75 | 11 | 12.50 | 14.40 | 15.50 | | | | | | | |
| 5 | 5.00 | 6.90 | 8.00 | 12 | 13.72 | 16.65 | 16.75 | | | | | | | |
| 6 | 6.25 | 8.15 | 9.25 | 13 | 15.00 | 16.90 | 18.00 | | | | | | | |
| 7 | 7.50 | 9.40 | 10.50 | 14 | 16.25 | 18.15 | 19.25 | | | | | | | |
| 8 | 8.75 | 10.65 | 11.75 | 15 | 17.50 | 19.40 | 20.50 | | | | | | | |