



2.5mm Wire to Board Header Straight (R/A) Type

MATERIAL

Insulator : Polyester
Contact Pin : Brass

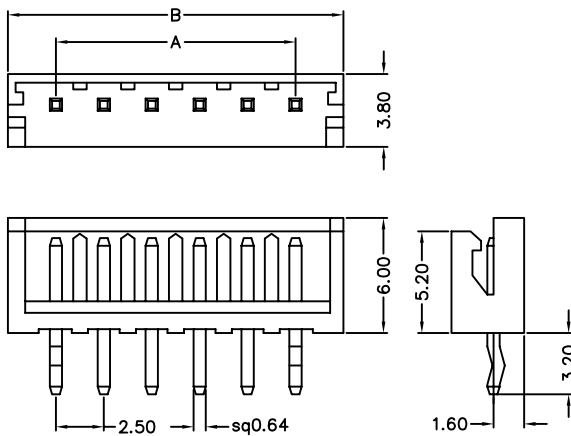
SPECIFICATION

Current Rate : 3 AMP
Insulation Resistance : 1000MΩ MIN.
Contact Resistance : 10mΩMax.
Operation Temperature : -25°C to +85°C

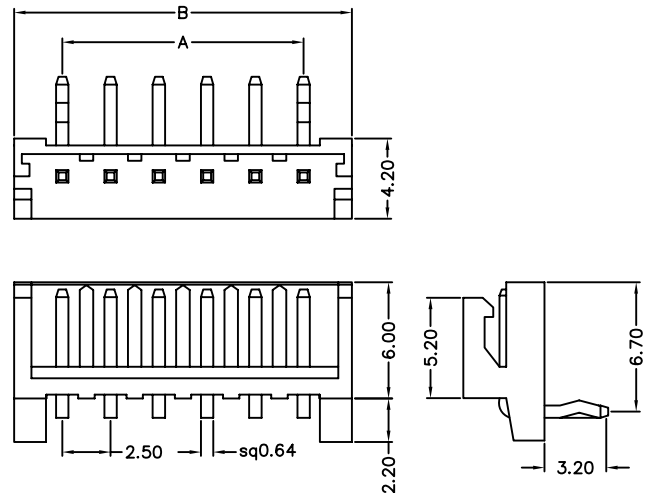


Detail Dimensions

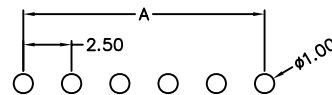
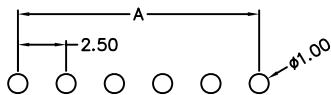
755-71-xxTW01



755-72-xxTW01



Recommended P.C.B Layout



Order Information

755-7 x - xx T W xx
1 2 3 4 5

Standard Parts	Type
755-71-xxTW01	Straight
755-72-xxTW01	Right Angle

- 1: Straight Type
2: Right Angle Type
2. No. of contacts
3. T: Tin Plating
4. W: White Insulator
5. Pinrex internal code

Number Of Contacts

Unit: mm

Poles	DIM A	DIM B	Poles	DIM A	DIM B
2	2.50	7.50	9	20.00	25.00
3	5.00	10.00	10	22.50	27.50
4	7.50	12.50	11	25.00	30.00
5	10.00	15.00	12	27.50	32.50
6	12.50	17.50	13	30.00	35.00
7	15.00	20.00	14	32.50	37.50
8	17.50	22.50	15	35.00	40.00