



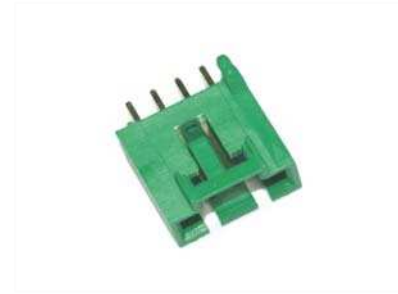
2.54mm CD-Rom Header Straight (R/A) Type

MATERIAL

Insulator : Polyester
Contact Pin : Brass

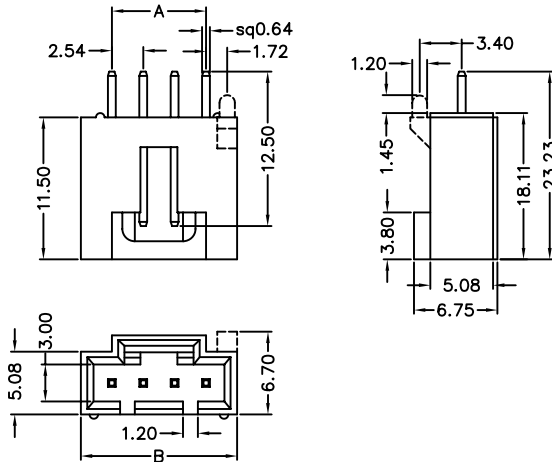
SPECIFICATION

Current Rate : 3 AMP
Insulation Resistance : 1000MΩ MIN.
Contact Resistance : 30mΩMax.
Operation Temperature : -25°C to +85°C

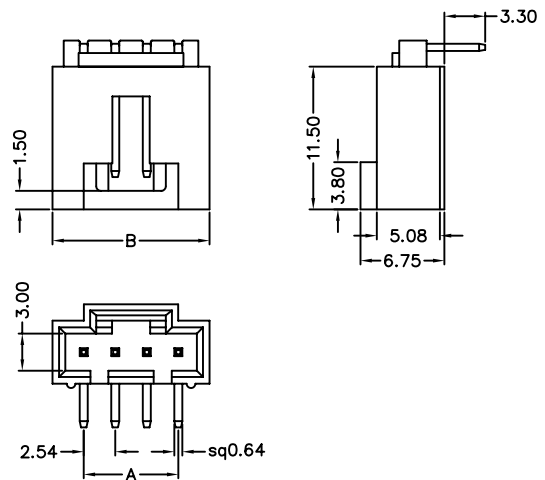


Detail Dimensions

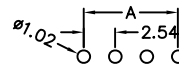
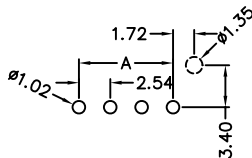
209-70-xxGB1x



209-71-xxGB3x



Recommended P.C.B Layout



Order Information

209-7 x - xx G B x x
1 2 3 4 5 6

Standard Parts	Type
209-70-xxGB21	without post
209-71-xxGB31	with stand off

- | | |
|-----------------------|-------------------------|
| 1. 0: Straight Type | R: Red Insulator |
| 1: Right Angle Type | Y: Yellow Insulator |
| 2. No. of contacts | 5. 1: with Post |
| 3. G: Gold Flash | 2: w/o Post & Stand Off |
| T: Tin Plating | 3: with Stand Off |
| 4. B: Black Insulator | 6. Pinrex internal code |
| W: White Insulator | |
| E: Green Insulator | |

Number Of Contacts

Unit: mm

Poles	DIM A	DIM B	Poles	DIM A	DIM B
2	2.54	7.62	9	20.32	25.40
3	5.08	10.16	10	22.86	27.94
4	7.62	12.65	11	25.40	30.48
5	10.16	15.24	12	27.94	33.02
6	12.70	17.78			
7	15.24	20.32			
8	17.78	22.86			