



# 2.54mm Wire to Board Header Straight (R/A) Type

## MATERIAL

Insulator : Polyester  
Contact Pin : Brass

## SPECIFICATION

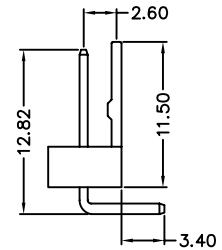
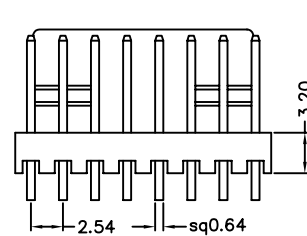
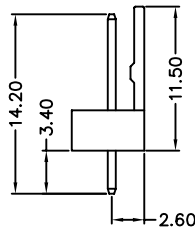
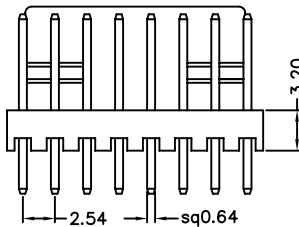
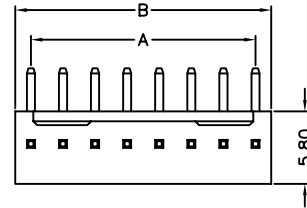
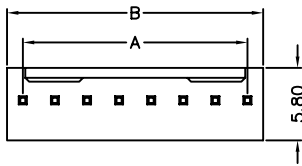
Current Rate : 2 AMP  
Insulation Resistance : 1000MΩ MIN.  
Contact Resistance : 10mΩMax.  
Operation Temperature : -25°C to +85°C



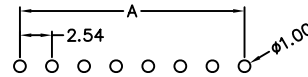
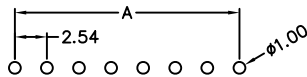
## Detail Dimensions

742-71-xxTW01

742-72-xxTW01



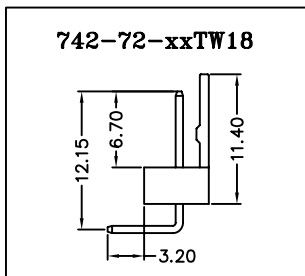
## Recommended P.C.B Layout



## Order Information

742-7 x - xx T W xx  
1 2 3 4 5

- 1: Straight Type
- 2: Right Angle Type
2. No. of contacts
3. T: Tin Plating  
G: Gold Flash
4. W: White Insulator
5. Pinrex internal code



Standard Parts	Type
742-71-xxTW01	Straight
742-72-xxTW01	Right Angle

## Number Of Contacts

Unit: mm

Poles	DIM A	DIM B	Poles	DIM A	DIM B	Poles	DIM A	DIM B						
2	2.54	5.12	9	20.32	23.02	16	38.10	40.94						
3	5.08	7.66	10	22.86	25.58	17	40.64	43.30						
4	7.62	10.20	11	22.40	28.12	18	43.18	45.90						
5	10.16	12.74	12	27.94	30.68	19	45.72	48.56						
6	12.70	15.30	13	30.48	33.10	20	48.26	50.80						
7	15.24	17.94	14	33.02	35.80									
8	17.78	20.48	15	35.56	38.34									