



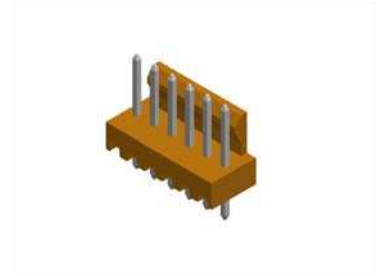
# 2.54mm Wire to Board Header Straight (R/A) Type

## MATERIAL

Insulator : Polyester  
Contact Pin : Brass

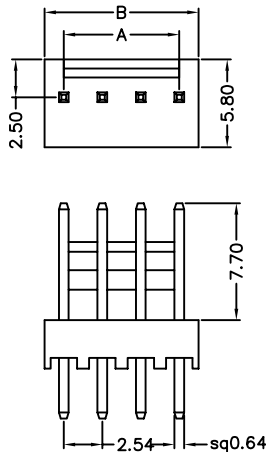
## SPECIFICATION

Current Rate : 2.5 AMP  
Insulation Resistance : 1000MΩ MIN.  
Contact Resistance : 10mΩMax.  
Operation Temperature : -25°C to +85°C

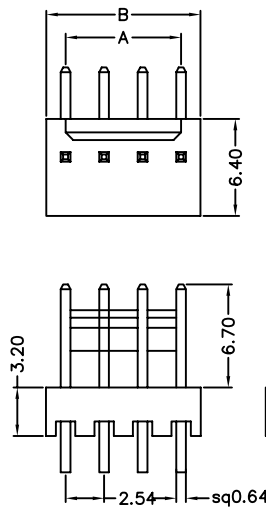


## Detail Dimensions

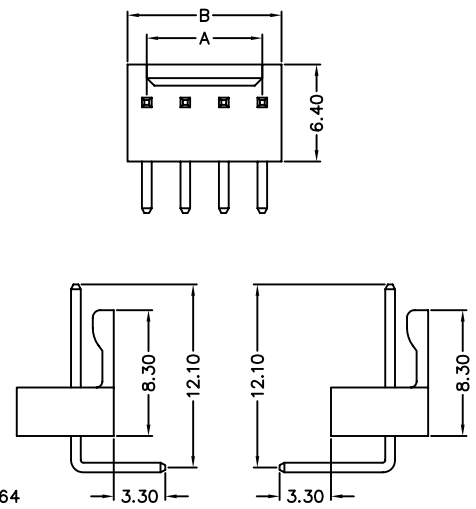
744-71-xxTW01



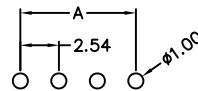
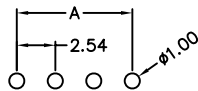
744-72-xxTW01



744-72-xxTW11



## Recommended P.C.B Layout

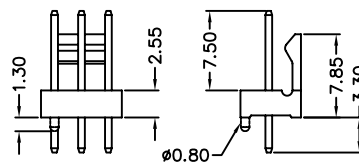


## Order Information

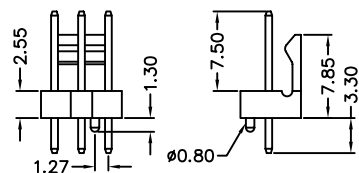
744-7 x - xx T x xx  
1 2 3 4 5

- 1: Straight Type
- 2: Right Angle Type
- 2: No. of contacts
- 3: T: Tin Plating
- 4: W: White Insulator
- R: Red Insulator
- B: Black Insulator
- 5: Pinrex internal code

744-81-03Tx10 (with post)



744-71-03Tx11 (with post)



Standard Parts	Type
744-81-03Tx10	with post
744-71-03Tx11	with post
744-71-04Tx11	with post
744-71-xxTx01	Straight
744-72-xxTx01	Right Angle

## Number Of Contacts

Unit: mm

Poles	DIM A	DIM B	Poles	DIM A	DIM B	Note			
2	2.54	5.08	9	20.32	22.86	There are many different types on 3P & 4P, please contact our Sales Rep. for more details! OEM/ODM projects welcome!!!			
3	5.08	7.62	10	22.86	22.40				
4	7.62	10.16	11	22.40	27.94				
5	10.16	12.70	12	27.94	30.48				
6	12.70	15.24							
7	15.24	17.78							
8	17.78	20.32							