



# SOJ / CCD Socket

## MATERIAL

Insulator : P.P.S.  
Contact Pin : Phosphor Bronze

## SPECIFICATION

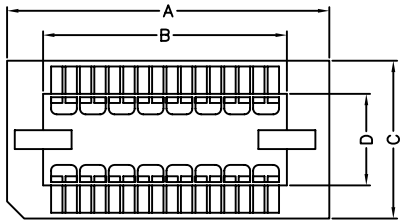
Current Rate : 1 AMP  
Insulation Resistance : 10,000MΩMin.  
Contact Resistance : 20mΩMax. at DC 100mA  
Operation Temperature : -55°C to +105°C



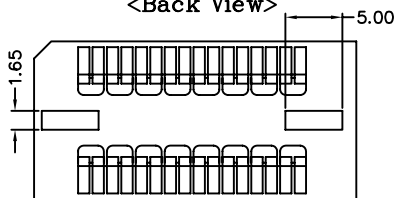
## Detail Dimensions

SOJ Socket

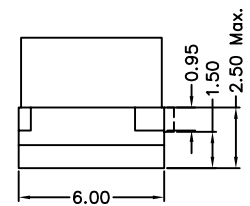
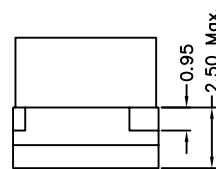
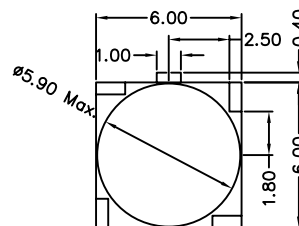
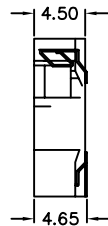
<Front View>



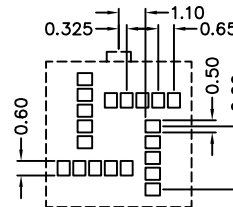
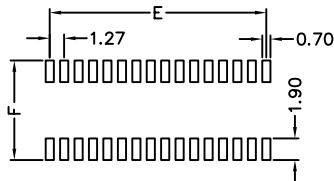
<Back View>



CCD Module Socket 981-43-206020



## Recommended P.C.B Layout



## Order Information

981-42 - x xx 0 2 1  
1 2 3

1. Row Spacing (0.3",0.4")
2. No. of contacts
3. 2: w/o posts  
3: with posts

Standard Parts	Type
981-42-3xx021	0.3" w/o posts
981-42-4xx021	0.4" w/o posts

Standard Parts
981-43-206020

## Number Of Contacts

Unit: mm

Poles	DIM A	DIM B	DIM C	DIM D	DIM E	DIM F		Poles	DIM A	DIM B	DIM C	DIM D	DIM E	DIM F	
324	23.26	16.36	13.87	8.05	13.97	8.76		428	25.80	18.90	16.41	10.70	16.51	11.30	
326	24.53	17.63	13.87	8.05	15.24	8.76		432	28.34	21.44	16.41	10.70	19.05	11.30	
328	25.80	18.90	13.87	8.05	16.51	8.76		440	33.40	26.50	16.41	10.70	24.13	11.30	
332	28.34	21.44	13.87	8.05	19.05	8.76		442	34.67	27.77	16.81	10.70	25.40	11.30	