



# Battery Holder

## ■ MATERIAL

Insulator : PBT or P.P.S.  
Contact Pin : Brass / Phosphor Bronze

## ■ SPECIFICATION

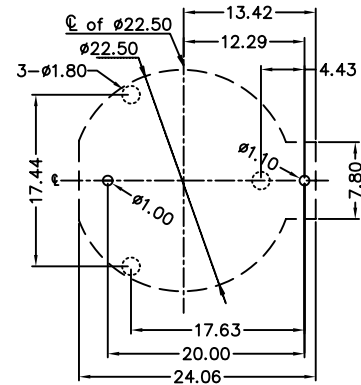
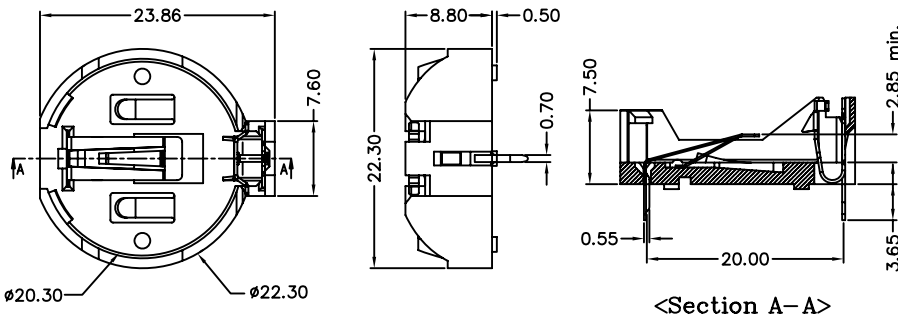
Current Rate : 1 AMP  
Insulation Resistance : 1,000MΩMin.  
Contact Resistance : 20mΩMax. at DC 100mA  
Operation Temperature : -55°C to +105°C



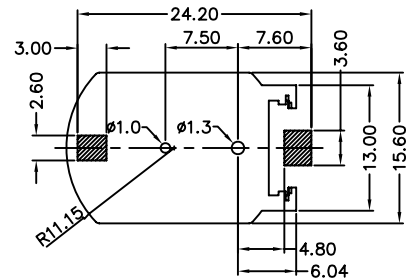
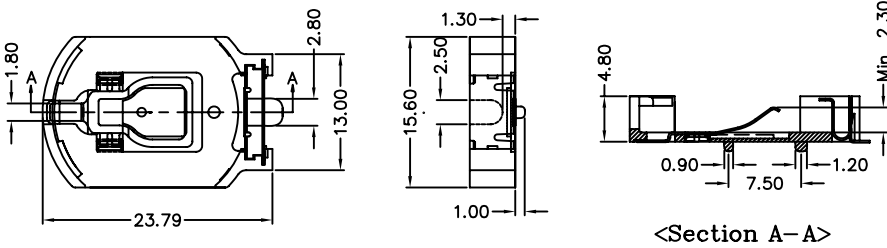
## ■ Detail Dimensions

## ■ Recommended P.C.B Layout

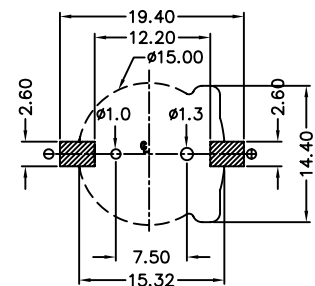
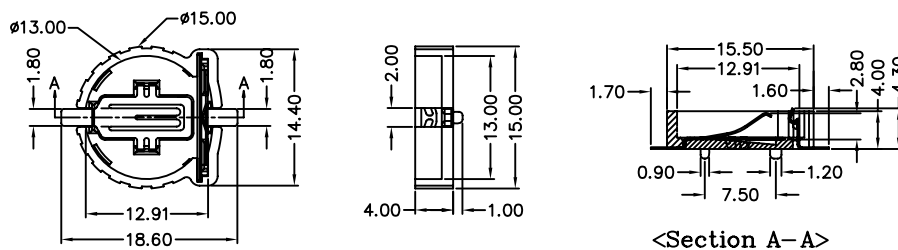
CR2032 780-71-00TB11



CR2032 780-72-00GF51



CR1220 780-72-01GF01



## ■ Order Information

780-7 X - XX X X XX  
1 2 3 4 5

Unit: mm

- |                   |                         |
|-------------------|-------------------------|
| 1: DIP Type       | 4: B: Black Insulator   |
| 2: SMT Type       | F: Brown Insulator      |
| 2. 00: CR2032     | 5. Pinrex internal code |
| 01: CR1220        |                         |
| 3. T: Tin Plating |                         |
| G: Gold Flash     |                         |

Standard Parts	Type
780-71-00TB11	CR2032 DIP
780-72-00GF51	CR2032 SMT
780-72-01GF01	CR1220 SMT

Many custom-made battery holders are not shown here, please contact our Sales Rep. for further information.