



Heyco® Original Strain Relief Bushings

Straight-thru for Round Cables

.875" (22,2 mm) to 1.187" (30,1 mm) Mounting Holes

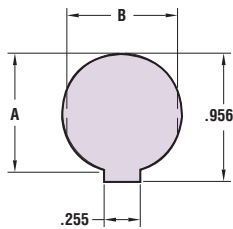
Fit 1/2" or 3/4" Electrical Knock-out Hole Sizes

- **Protects the lifeline of your electric/ electronic products** by absorbing the forces of pull, push, and twist that may be exerted on the flexible power cord.
- Securely anchors, insulates, and protects cables at panel entry points.
- Sizes SR 7-Series to SR 9-Series for mounting hole diameters from .875" (22,2 mm) to 1.187" (28,6 mm).
- Sizes for thin .062" (1,6 mm) panel available:
SR 8N-2
See chart for details.
- See page 4-38 for corresponding **Mounting Hole Plugs** which can be used to fill blank/unused Mounting Holes and thus allow for a single panel design for multiple applications.
- Consult Heyco for other wire types and sizes.
- See pages 4-27 & 4-28 for SR assembly tools.
- **See page 4-19 for Quick Specs.**

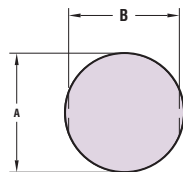
| UL Type | WILL FIT THESE CABLES | | | PANEL DIMENSIONS | | | | | | PART NO. | DESCRIPTION | PART DIM. | | Mounting Hole Plug | | |
|------------------------------|-----------------------|------------------|---------------|-------------------------|------|--------------------------|------|-------------------------------|-----|----------|-------------|------------------|---------|--------------------|----------|---------------|
| | AWG/ Conductors | Approximate Size | | A Mounting Hole Dia. | | B To Prevent Rotation | | Finished Fit Panel Thickness* | | | | C BODY LENGTH | | | | |
| | | in. | mm. | in. | mm. | in. | mm. | in. | mm. | | | in. | mm. | | PART NO. | |
| SJ, SJT & SJO | 16/2 | .325 | 8,3 | .875 | 22,2 | .770 | 19,6 | .125 | 3,2 | 1240 | SR 7K-2 | .750 | 19,1 | 2509 | | |
| | 18/3 | .330 | 8,4 | | | | | | | | | | | | | |
| | 14/2 | .350 | 8,9 | | | | | | | | | | | | | |
| | 16/3 | .355 | 9,0 | | | | | | | | | | | | | |
| | 18/4 | .360 | 9,1 | | | | | | | | | | | | | |
| Same as SR 7K-2 above except | | | | See Schematic | | | | | | 1271 | SR 7KR-2 | .750 | 19,1 | 2509 | | |
| SJT | 14/3 | .370 | 9,4 | .875 | 22,2 | .770 | 19,6 | .125 | 3,2 | 1247 | SR 7W-2 | .750 | 19,1 | 2509 | | |
| | 12/3 | .425 | 10,8 | | | | | | | | | | | | | |
| S, SO, & ST | 18/2 | .390 | 9,9 | .875 | 22,2 | .770 | 19,6 | .125 | 3,2 | 1247 | SR 7W-2 | .750 | 19,1 | 2509 | | |
| | 18/3 | .405 | 10,3 | | | | | | | | | | | | | |
| | 16/2 | .405 | 10,3 | | | | | | | | | | | | | |
| | 16/3 | .430 | 10,9 | | | | | | | | | | | | | |
| Same as SR 7W-2 above except | | | | | | | | | | .200 | 5,1 | 1250 | SR 7L-2 | .750 | 19,1 | consult Heyco |
| SJT | 12/3 | .425- .475 | 10,8- 12,1 | .875 | 22,2 | .840 | 21,3 | .125 | 3,2 | 1497 | SR 31-2 | .812 | 20,6 | 2509 | | |
| | 14/2 | .530 | 13,5 | | | | | | | | | | | | | |
| S & ST | 14/3 | .560 | 14,2 | .875 | 22,2 | .840 | 21,3 | .062 | 1,6 | 1254 | SR 8N-2 | .828 | 21,0 | 2509 | | |
| | 12/2 | .600 | 15,3 | | | | | | | | | | | | | |
| Same as SR 8N-2 above except | | | | | | | | | | .125 | 3,2 | 1260 | SR 8P-2 | .812 | 20,6 | 2509 |
| | | | | | | | | | | .187 | 4,8 | 1274 | SR 8L-1 | .812 | 20,6 | consult Heyco |
| S | 12/2 | .600 | 15,2 | 1.093 | 27,7 | 1.000 | 25,4 | .281 | 7,1 | 1287 | SR 9P-2 | 1.000 | 25,4 | 2717 | | |
| | 12/3 | .635 | 16,1 | 1.125 | 28,6 | | | | | | | | | | | |
| | 10/2 | .640 | 16,3 | 1.093 | 27,7 | | | | | | | | | | | |
| S, SO & ST | 10/3 | .690 | 17,5 | 1.187 | 28,6 | | | | | | | | | | | |
| SRDT | 12/4 | | | | | | | | | | | | | | | |

Standard color black. Consult Heyco for white and other colors.

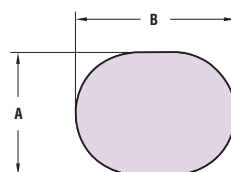
*Maximum Panel Thickness. Part has additional clearance. Consult Heyco for your Custom Finished Fit Panel Thickness.



FOR SR-7KR-2 ONLY



STANDARD MOUNTING HOLES



ELONGATED MOUNTING HOLE

