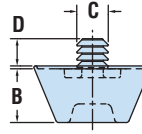
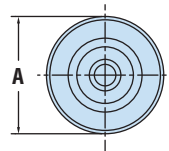




- Rubber bumpers are designed for through hole installation.
- Designed to fit snugly into your opening and not let air, water, etc. pass through.
- Can also be used as feet.
- For Heyco Adhesive-Backed Bumpers see page 42.
- Part Description Key: RGB X-Y-Z where X = Mounting Hole Diameter (inches), Y = Base Diameter (inches), and Z/32 = Base Height

Heyco® Rubber Push-In Bumpers

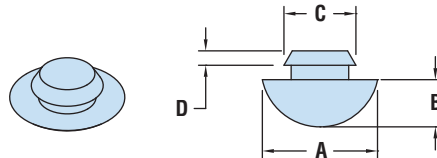
PANEL DIMENSIONS				PART NO. Black	DESCRIPTION	MATERIAL	PART DIMENSIONS								TYPE
Mounting Hole Dia.		Maximum Thickness					A Base Diameter		B Base Height		C Insert Diameter		D Insert Height		
in.	mm.	in.	mm.			in.	mm.	in.	mm.	in.	mm.	in.	mm.		



TYPE H

.203	5,2	.08	2,0	G3116	RGB 203-812-6	Santoprene	.81	20,6	.19	4,7	.22	5,6	.20	5,1	H
				G3117	RGB 203-812-8	Santoprene	.81	20,6	.25	6,4					
				G3118	RGB 203-812-12	Santoprene	.81	20,6	.38	9,5					

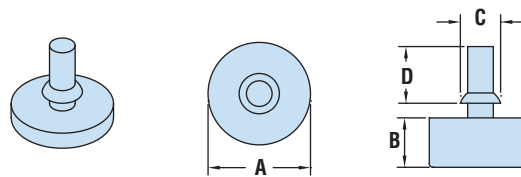
Standard color black.



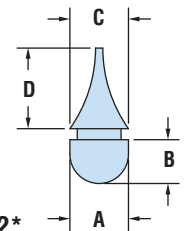
TYPE D

.218	5,5	.09	2,4	G2016	RGB 218-406-6	SBR	.41	10,3	.19	4,7	.28	7,1	.09	2,4	D
.250	6,4	.05	1,2	G2020	RGB 250-500-6	SBR	.50	12,7	.17	4,3	.31	7,9	.19	4,7	
.312	7,9	.06	1,6	G2035	RGB 312-375-5	SBR	.38	9,5	.16	4,0	.38	9,5	.16	4,0	
.328	8,3	.09	2,4	G2039	RGB 328-846-6	SBR	.85	21,5	.19	4,7	.42	10,7	.27	6,7	
.500	12,7	.13	3,2	G2043	RGB 500-1000-6	SBR	1.00	25,4	.19	4,7	.63	15,9	.13	3,2	

Standard color black.



TYPE T1



TYPE T2*

.118	3,0	.10	2,5	G2000	RGB 118-236-4	EPDM	.24	6,0	.12	3,0	.20	5,0	.47	12,0	T1
.177	4,5	.06	1,5	G2006	RGB 177-334-9	SBR	.33	8,5	.30	7,5	.24	6,0	.73	18,5	
.187	4,7	.05	1,2	G2009	RGB 187-250-6	SBR	.25	6,4	.19	4,7	.25	6,4	.34	8,7	T2
.218	5,5	.13	3,2	G2017	RGB 218-875-6		.88	22,2	.17	4,3	.34	8,7	.48	12,3	T1

Standard color black.

*For pull through applications.

Quick
Specs

Material TPE, SBR, or EPDM
Temperature Range -40°F (-40°C) to 221°F (105°C)