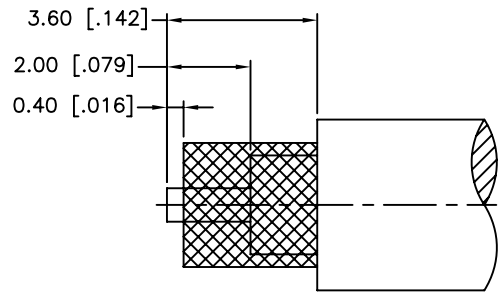
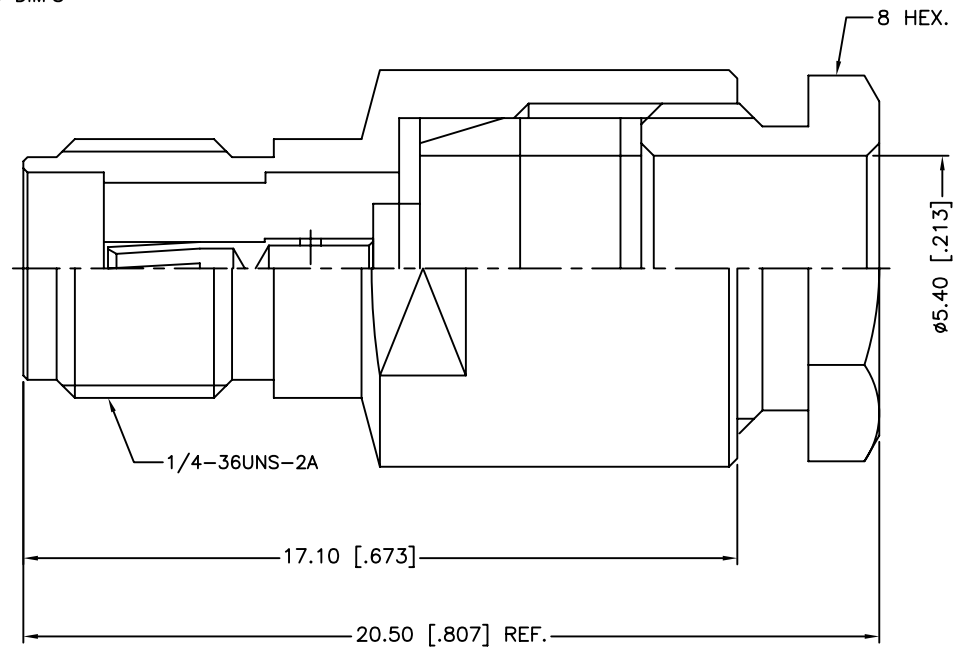


REV.	DATE	ECR NO.	DESCRIPTION
NC	11/09/10	XXXXXX	INITIAL RELEASE



RECOMMENDED  
CABLE STRIPPING DIM'S



1. CONTACT PIN TO SOLDER

8	HEX NUT	BRASS	GOLD	1
7	WASHER	BRASS	GOLD	1
6	GASKET	SILICONE	RED	1
5	TOP HAT	BRASS	GOLD	1
4	WASHER	BRASS	GOLD	1
3	CONTACT PIN	BER. COPPER	GOLD	1
2	INSULATOR	PTFE	NATURAL	1
1	BODY	BRASS	GOLD	1
DESCRIPTION	MATERIAL	FINISH	QTY	

UNLESS OTHERWISE SPECIFIED DIMENSIONS ARE IN MILLIMETERS. DIMENSIONS IN [ ] ARE IN INCHES AND FOR CUSTOMER REFERENCE ONLY.

UNLESS OTHERWISE SPECIFIED TOLERANCES FOR MILLIMETERS ARE:  
0.5 - 8mm ± 0.20mm  
8 - 30mm ± 0.40mm  
30 - 120mm ± 0.50mm

UNLESS OTHERWISE SPECIFIED TOLERANCES FOR INCHES ARE:  
.020 - .315 = ± 0.007"  
.315 - 1.180 = ± 0.015"  
1.180 - 4.724 = ± 0.020"

DO NOT SCALE DRAWING

APPROVALS	DATE
DRAWN M.ZHANG	11/09/10
CHECKED	
ISSUED	
SHEET 1 OF 1	
CAD FILE	C:/CONNEX/132127.DWG

<b>Amphenol Connex</b>			
PART DESCRIPTION <b>SMA CLAMP JACK (FOR RG-58/U CABLE)</b>			
PART NO. <b>132127</b>			
DWG. NO.	132127.DWG	REV.	NC
SIZE	A	SCALE	NA