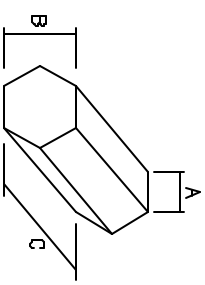
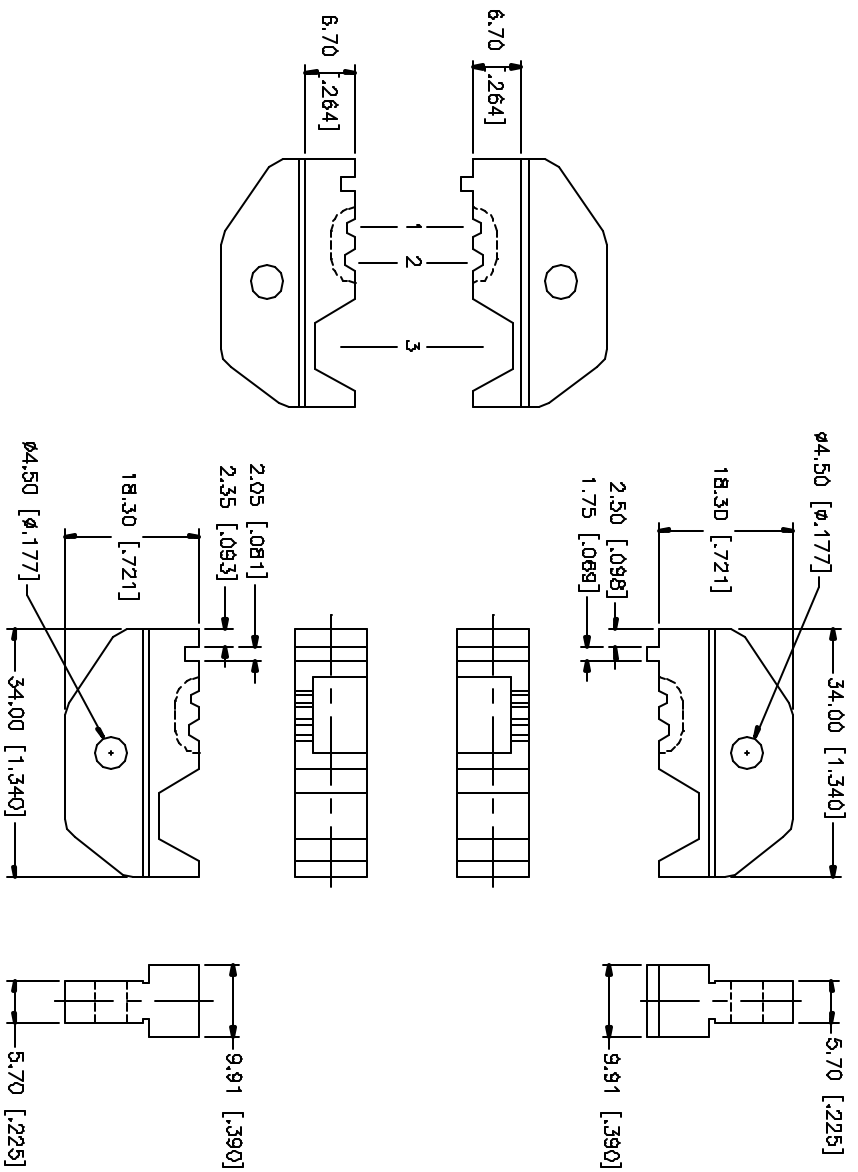


REV.	DATE	DESCRIPTION
NC	08/31/04	UPDATE DRAWING FORMAT



	A	B	C
1	1.17 [.046]	2.03 [.080]	2.54 [.100]
2	1.47 [.058]	2.54 [.100]	2.54 [.100]
3	6.29 [.248]	10.89 [.429]	9.91 [.390]
4			

REV.	DESCRIPTION	MATERIAL	FINISH	QTY	DO NOT SCALE DRAWING	APPROVALS	DATE	PART NO.	DWG. NO.	REV.	SIZE	SCALE
B								47-20003	47-20003.DWG	A	A	NA
7												
6												
5												
4												
3												
2	DIE BODY	CAST STEEL	BLK. OXIDE									
1												
<p>UNLESS OTHERWISE SPECIFIED DIMENSIONS ARE IN MILLIMETERS DIMENSIONS IN [] ARE IN INCHES AND FOR CUSTOMER REFERENCE ONLY.</p> <p>UNLESS OTHERWISE SPECIFIED TOLERANCES FOR MILLIMETERS ARE:</p> <p>0.6 - 30mm ± 0.20mm</p> <p>B - 30mm ± 0.40mm</p> <p>30 - 120mm ± 0.50mm</p> <p>UNLESS OTHERWISE SPECIFIED TOLERANCES FOR INCHES ARE:</p> <p>.020 - .315 ± 0.007"</p> <p>.315 - 1.180 ± 0.015"</p> <p>1.180 - 4.724 ± 0.020"</p>						<p>CAD FILE</p> <p>C:/MISC/47-20003.DWG</p>		<p>Amphenol Connex</p> <p>CRIMP DIE SET</p>				