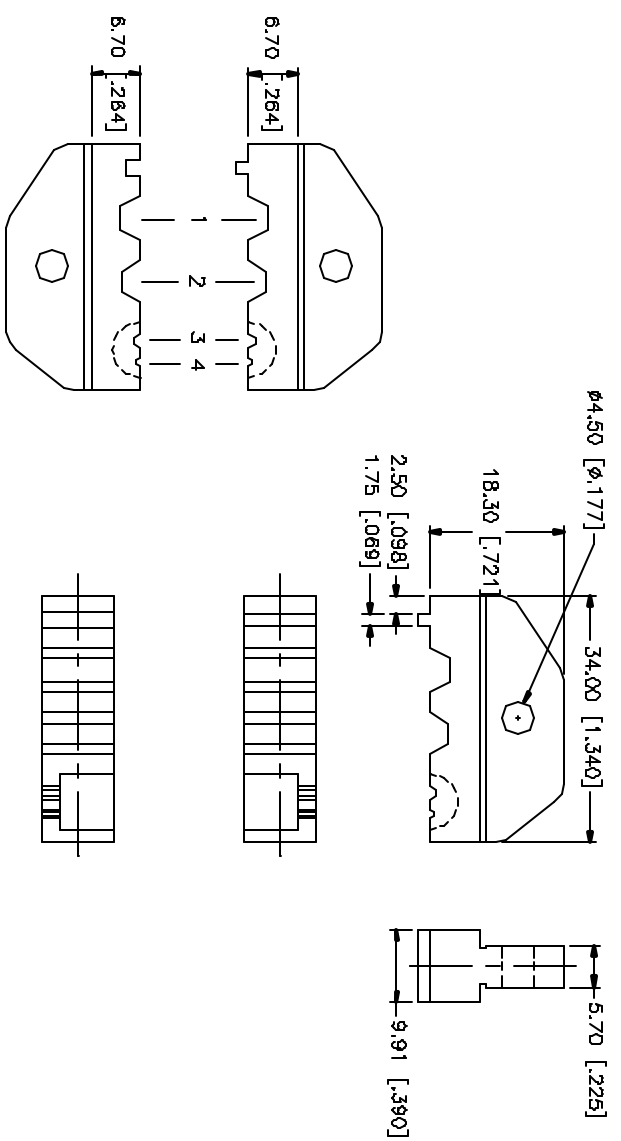
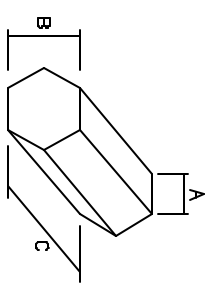


REV.	DATE	DESCRIPTION
A	08/31/04	UPDATE DRAWING FORMAT



	A	B	C
1	3.12 [.123]	5.40 [.213]	9.91 [.390]
2	2.78 [.110]	4.82 [.190]	9.91 [.390]
3	.990 [.039]	1.72 [.068]	2.54 [.100]
4	.820 [.024]	1.07 [.042]	2.54 [.100]



NO.	DESCRIPTION	MATERIAL	FINISH	QTY
1	DIE BODY	CAST STEEL	BLK. OXIDE	
2				
3				
4				
5				
6				
7				
8				

USING DIMENSION SYMBOLS AND DIMENSIONS IN MILLIMETERS AND INCHES ARE FOR DISTRICT REFERENCE ONLY.	
LARGEST DIMENSION FOR PARTS 0.5 - 8mm ± 0.20mm 8 - 30mm ± 0.40mm 30 - 120mm ± 0.50mm	LARGEST DIMENSION FOR DIMENSIONS FOR PARTS .020 - .315 ± 0.012" .315 - 1.180 ± 0.012" 1.180 - 4.724 ± 0.020"
APPROVALS DRAWN G.R.S. CHECKED BUDED SHEET 1 OF 1	DATE 08/31/04 PART DESCRIPTION GRIMP DIE SET PART NO. 47-20245
CAD FILE C:/MISC/47-20245.DWG	DWG. NO. 47-20245.DWG REV. A SIZE A SCALE NA

Amphenol Connex