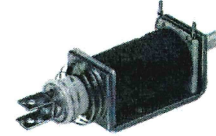


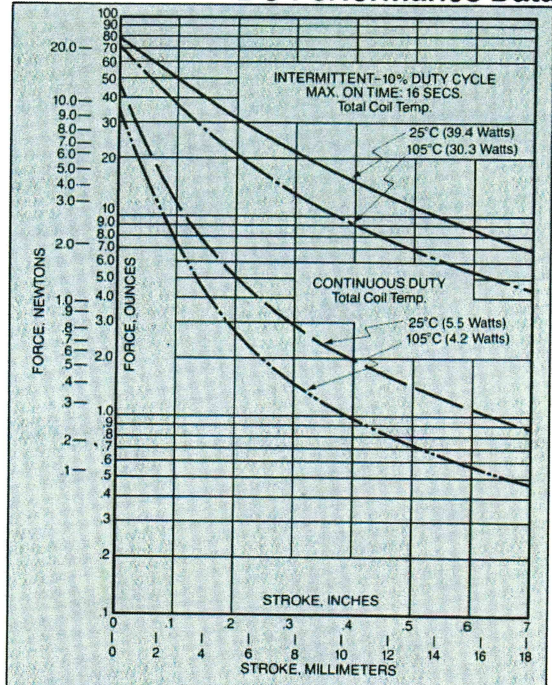
# SDA Solenoid



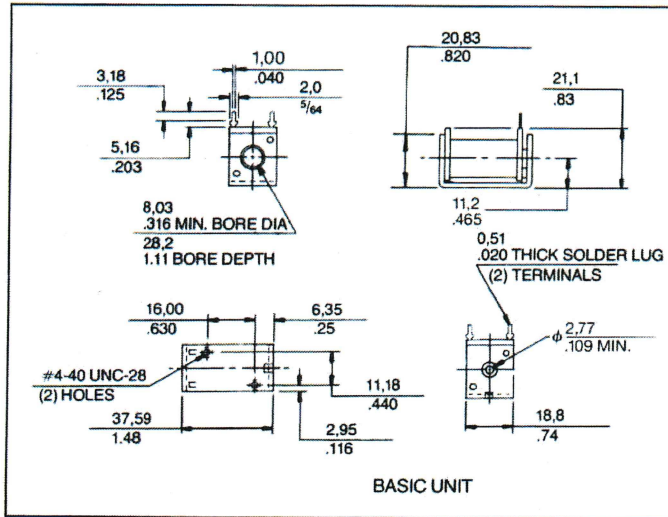
## Specifications

|                             |   |                           |   |
|-----------------------------|---|---------------------------|---|
| <b>Type of Operation:</b>   | Push or pull  | <b>Plating Standards:</b> | Frame—Zinc, chromate;<br>Clevis—Zinc; Plunger—<br>Electroplate Nickel;<br>Stop—Electroless Nickel<br>(Others available on<br>request) |
| <b>Standard Voltages:</b>   | 6 VDC, 12 VDC, 24 VDC,<br>(Others available<br>on request)  | <b>Plunger Type:</b>      | Slot and cross drilled<br>per drawing standard<br>(Options available per<br>drawing)  |
| <b>Insulation Material:</b> | Class "B" standard<br>(Others available<br>on request)  | <b>Plunger Weight:</b>    | 0.5 ounces standard   |
| <b>Coil Finish:</b>         | Acetate tape standard<br>(Also available: varnish<br>dip, glass cloth tape,<br>fungus resistant finish)                   |                           |   |
| <b>Coil Terminations:</b>   | Terminals per drawing<br>standard (Also available:<br>flying leads, bent ter-<br>minals, banded terminals<br>solder lugs) |                           |   |

## DC Performance Data

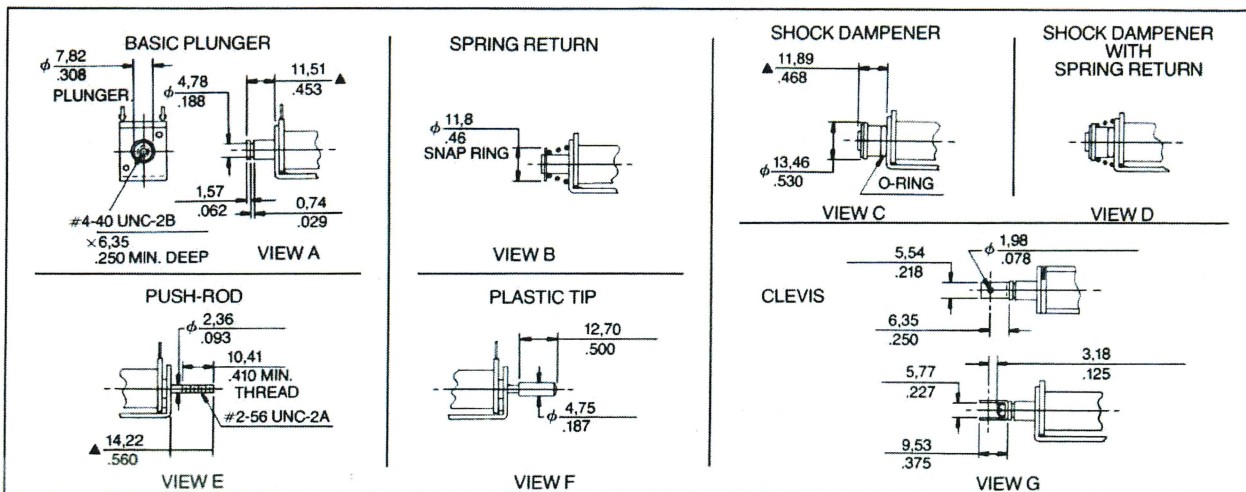


## Dimensions



| Duty Cycle | Maximum "On" Time | Stroke vs. Force* (inches) | Force* (ounces) | Rated Power (watts) |
|------------|-------------------|----------------------------|-----------------|---------------------|
| Continuous | ∞                 | 0.0                        | 52.0            | 5.5                 |
|            |                   | 0.2                        | 5.4             |                     |
|            |                   | 0.4                        | 2.0             |                     |
| 10%        | 16 sec.           | 0.0                        | 80.0            | 39.4                |
|            |                   | 0.2                        | 32.0            |                     |
|            |                   | 0.4                        | 15.5            |                     |

\* TYPICAL FORCE @ 25°C AND NOMINAL RATED DC VOLTAGE



▲ ENERGIZED DIM.

## JEWELL INSTRUMENTS, LLC

850 PERIMETER ROAD → MANCHESTER, NEW HAMPSHIRE 03103 USA  
 TOLL FREE: 800 227-5955 → TEL: 603 669-6400 → FAX: 603 669-5962  
 EMAIL: sales@jewellinstruments.com → WEB: www.jewellinstruments.com