

1000 BASE-T PC CARD LAN MAGNETICS SOLUTIONS

P/N: NA0068R LF DATA SHEET(Preliminary)

Feature

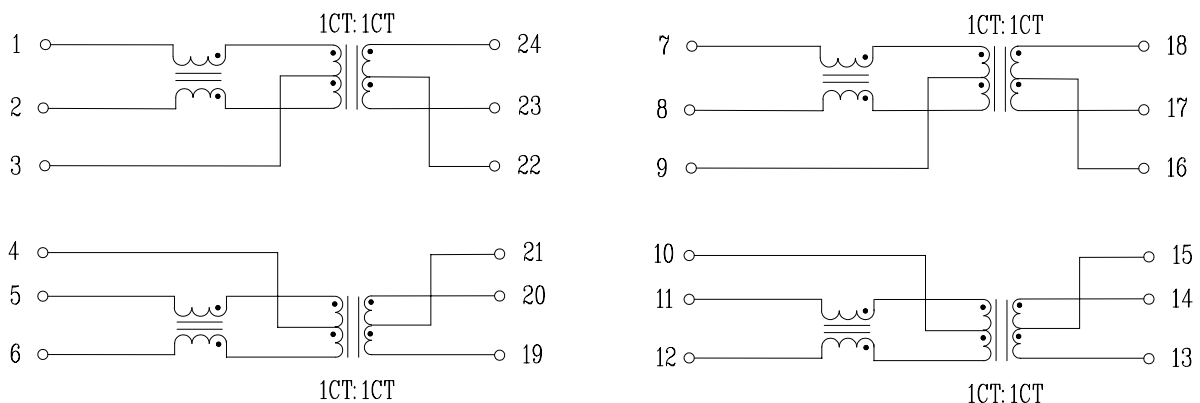


- Half port and single port designs for maximum layout flexibility.
- Greater than 350 uH(100KHz) at DC current Bias 8mA.
- Comply with ROHS & Halogen Free requirements.
- Operating temperature range: 0 to +70 .
- Storage temperature range: -25 to +85 .

Electrical Specifications @ 25°C						
Part Number	Turns Ratio (±3%)		OCL (uH Min) @100KHz/0.1V with 8mA DC Bias	Cw/w (pF Max)	L.L (uH Max)	HI-POT (Vrms)
	TX	RX				
NA0068R LF	1CT:1CT	1CT:1CT	350	25	0.4	1500

Continue								
Part Number	Insertion Loss (dB Max)	Return Loss (dB Min)				Cross talk (dB Min)	DCMR (dB Min)	
		0.3-30MHz	40MHz	50MHz	60-80MHz		0.3-100MHz	0.3-60MHz
NA0068R LF	-1.1	-18	-15.5	-13.5	-10	-38	-33	-26

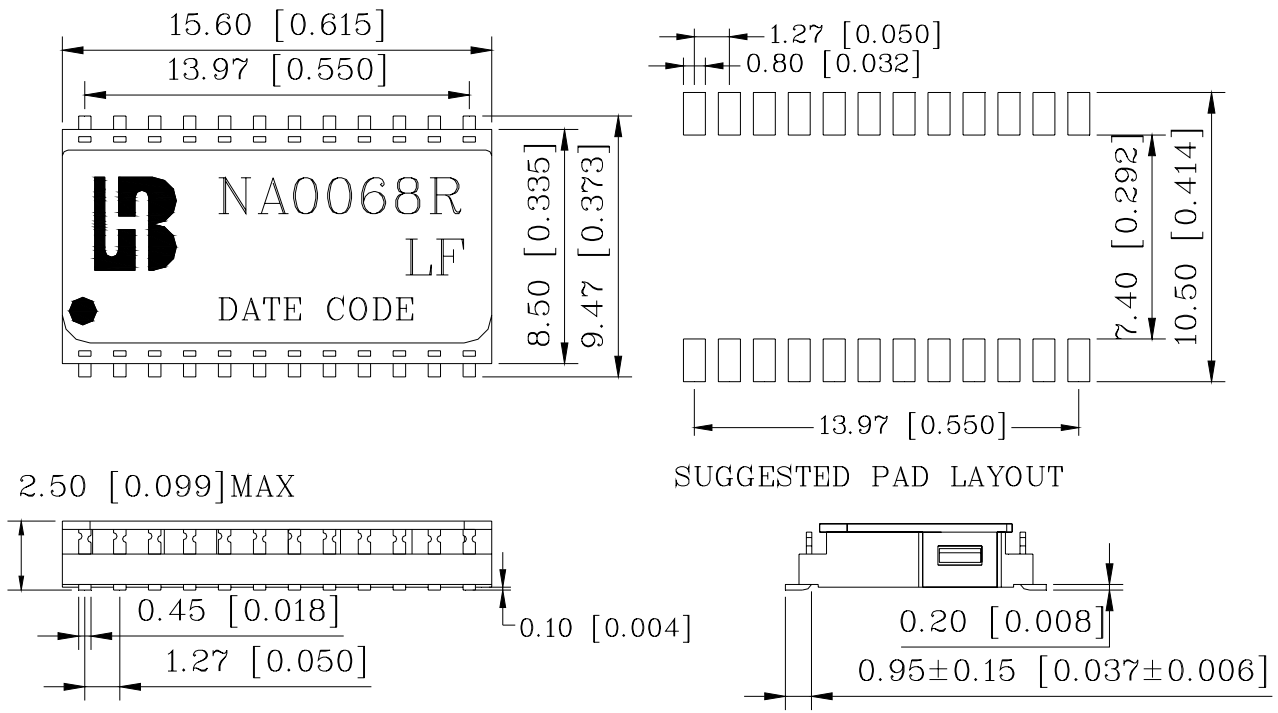
Schematic



1000 BASE-T PC CARD LAN MAGNETICS SOLUTIONS

P/N: NA0068R LF DATA SHEET(Preliminary)

Mechanical



Units: mm[Inches] Tolerances XX.X0: ±0.25[0.010]
 0.XX: ±0.05[0.002]