

# 698-960 MHz/1710-2700 MHz 2- Port MIMO Pole Mount Low-PIM Directional Panel Antenna



Close-up of connector and bracket system

## MUTI-BAND LOW-PIM DIRECTIONAL PANEL ANTENNA

The PAS69278P antenna is a wide-band dual-port panel antenna with slant 45 polarization that covers the domestic LTE700/Cellular/PCS/AWS/MDS and global GSM900/GSM1800/UMTS/LTE2600 bands. The antenna is ideal for both indoor and outdoor applications. It includes a UV-stable radome enclosure that provides years of use without degradation to either the mechanical properties or aesthetics.

### FEATURES

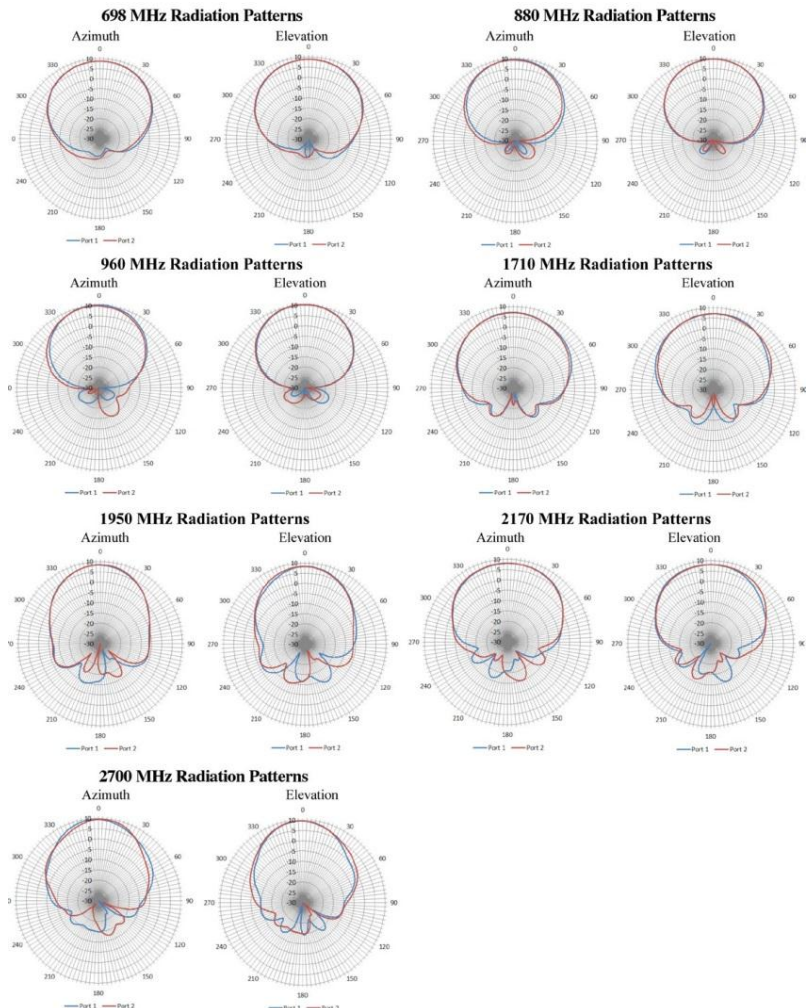


- Applicable for both 3G/4G solutions
- Domestic LTE 700 band and Global LTE 2600 band
- WiMax 2300/2500 bands
- Domestic Cellular and Global GSM
- Weatherproof UV stable radome
- Low Passive Intermodulation
- Conformance to RoHS

### APPLICATIONS

- In-building Wireless Networks
- 802.11 a/b/g/n
- iDAS/oDAS
- Wireless Terminal, Point-of-Sale, Machine-to-Machine
- Automatic meter reading and home security

### ANTENNA PATTERNS



## 698-960 MHz/1710-2700 MHz 2- Port MIMO Pole Mount Low-PIM Directional Panel Antenna

Port 1 /Port 2								
Frequency Bands, MHz	700	850	900	1800	1900	2100	2300	2600
Peak Gain, dBi (Typ)	8.7	9.0	9.8	7.5	8.5	8.4	9.5	9.7
Peak Gain, dBi (Max)	9.1	9.7	10.4	8.5	9.1	9.1	10.1	10.0
PAS69278P-91NF Additional Loss, dB	0.5	0.6	0.6	0.9	0.9	1.0	1.1	1.1
VSWR (Typ)	<2.0:1	<1.9:1	<1.7:1	<1.6:1	<1.5:1	<1.5:1	<1.6:1	<1.8:1
Isolation, dB (Typ)	<-38	<-40	<-40	<-30	<-30	<-30	<-30	<-30
3 dB Beamwidth, Vertical Plane	66° to 70°	61° to 65°	56° to 60°	57° to 84°	46° to 62°	46° to 72°	57° to 66°	48° to 55°
3 dB Beamwidth, Horizontal Plane	65° to 74°	59° to 65°	57° to 60°	56° to 85°	52° to 64°	52° to 82°	58° to 63°	48° to 54°
PIM, 3rd Order, 2 x 20W (Typ)	< -151 dBc			< -153 dBc				
CPR at Boresight (Typ)	25 dB			23 dB				
CPR at Boresight (Min)	25 dB			17 dB				
F/B Ration, Co-pol	21 dB							
Isolation, (Min)	-28 dB							
PIM, 3rd Order, 2 x 20W (Max)	< -150 dBc							
Maximum VSWR	2.0:1							
Nominal Impedance	50 Ω							
Max Input Power per port	50 Watts							
Polarization	Slant ± 45°							
RF Connector	Dual Type N female							
Radome & Base color	White, color code (SABIC) WH9B034							
Flammability Rating (Radome)	UL 94V0 Materials							
Dimensions (width x length x height)	295 x 295 x 82 mm							
Weight	1.46 kg							
Storage Temperature	-40°C to 85°C							
Operational Temperature	-30°C to 70°C							
Environmental Conditions	ETSI EN300 019-2-4, class 4.1E.							
Wind Rating	150 kn/hr (93 mph)							
Ingress Protection	IP55							
Material Substance Compliance	RoHS Compliant							

MODEL NUMBER	CABLE LENGTH	CONNECTOR
PAS69278P-FNF	NA (Direct Connect)	Dual Type N-female
PAS69278P-91NF	Dual 91 cm (36")	Dual Type N-female
PAS69278P-30D41F	Dual 30 cm (12")	Dual 4.1-9.5 Mini DIN Female

ANT-DS-PAS69278P 011215

Any information furnished by Laird and its agents is believed to be accurate and reliable. All specifications are subject to change without notice. Responsibility for the use and application of Laird materials rests with the end user, since Laird and its agents cannot be aware of all potential uses. Laird makes no warranties as to the fitness, merchantability or suitability of any Laird materials or products for any specific or general uses. Laird, Laird Technologies, Inc or any of its affiliates or agents shall not be liable for incidental or consequential damages of any kind. All Laird products are sold pursuant to the Laird Technologies' Terms and Conditions of sale in effect from time to time, a copy of which will be furnished upon request. © Copyright 2014 Laird Technologies, Inc. All Rights Reserved. Laird, Laird Technologies, the Laird Technologies Logo, and other marks are trademarks or registered trademarks of Laird Technologies, Inc. or an affiliate company thereof. Other product or service names may be the property of third parties. Nothing herein provides a license under any Laird or any third party intellectual property rights.