

Customer Information Sheet

DRAWING No.: M20-107XX00

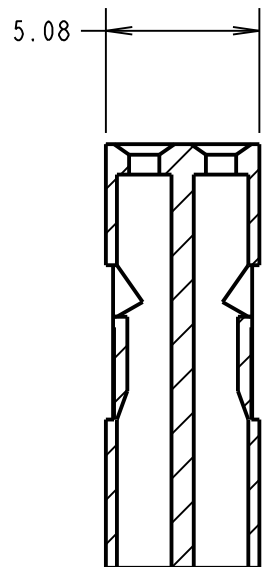
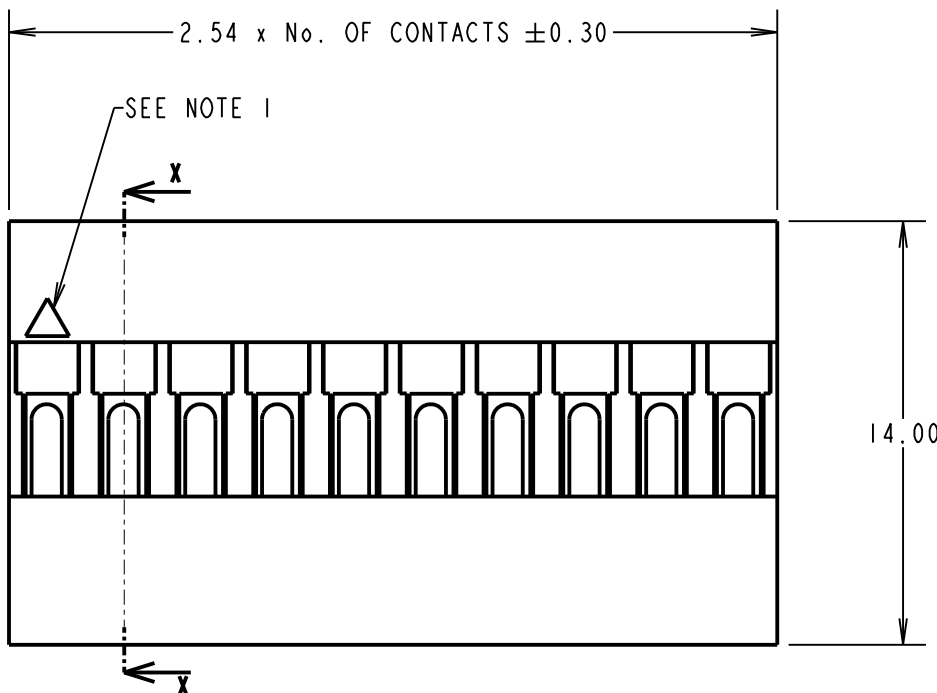
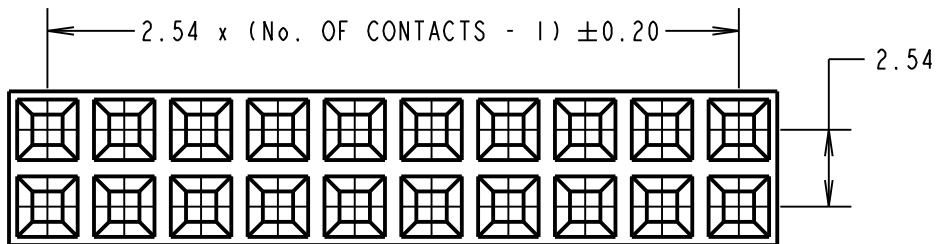
IF IN DOUBT - ASK

©

NOT TO SCALE

THIRD ANGLE PROJECTION

ALL DIMENSIONS IN mm



SPECIFICATIONS:

ELECTRICAL:

CURRENT VOLTAGE RATING = 3A AC/DC
 VOLTAGE RATING = 250V AC MAX
 CONTACT RESISTANCE = 20mΩ MIN
 INSULATION RESISTANCE = 1,500MΩ MIN
 DIELECTRIC STRENGTH = 1,500 AC FOR 1 MINUTE

ENVIRONMENTAL:

TEMPERATURE RANGE = -40°C TO +105°C

ORDER CODE:

M20-107XX00

No. OF CONTACTS:

NOTES:

1. CONTACT No. 1 MARKER SYMBOL.
2. FOR USE WITH CRIMP CONTACTS:
 M20-11600XX (REELED CONTACTS),
 M20-11800XX (LOOSE CONTACTS).
3. THE ABOVE SPECIFICATIONS APPLY WHEN THIS MOULDING IS USED WITH THE SPECIFIC CONTACTS.
4. FOR COMPLETE ELECTRICAL AND MECHANICAL SPECIFICATIONS, SEE COMPONENT SPECIFICATION C001XX (LATEST ISSUE).

SB	4	14.07.14	12528
NAME	ISS.	DATE	C/NOTE
APPROVED: S.BENNETT			
CHECKED: M.PLESTED			
DRAWN: S.BENNETT			
CUSTOMER REF.:			
ASSEMBLY DRG:			

HARWIN

www.harwin.com
 technical@harwin.com

THIS DRAWING AND ANY INFORMATION OR DESCRIPTIVE MATTER SET OUT HEREON ARE CONFIDENTIAL AND COPYRIGHT PROPERTY OF THE HARWIN GROUP AND MUST NOT BE DISCLOSED, LOANED, COPIED OR USED FOR MANUFACTURING, TENDERING OR FOR ANY OTHER PURPOSE WITHOUT THEIR WRITTEN PERMISSION.

TOLERANCES

X. = ±1mm
 X.X = ±0.25mm
 X.XX = ±0.10mm
 X.XXX = ±0.01mm
 ANGLES = ±5°
 UNLESS STATED

MATERIAL:

PPE+PS
 UL94V-1 BLACK

FINISH:

CLEAN, FLASH-FREE

S/AREA:

mm²

TITLE:

2.54mm PITCH DIL
 CRIMP MOULDING

DRAWING NUMBER:

M20-107XX00

SHT
 2 OF 2