

Customer Information Sheet

DRAWING No.: M22-636XXX SHEET 2 OF 2

IF IN DOUBT - ASK

(C)

NOT TO SCALE

THIRD ANGLE PROJECTION

ALL DIMENSIONS IN mm

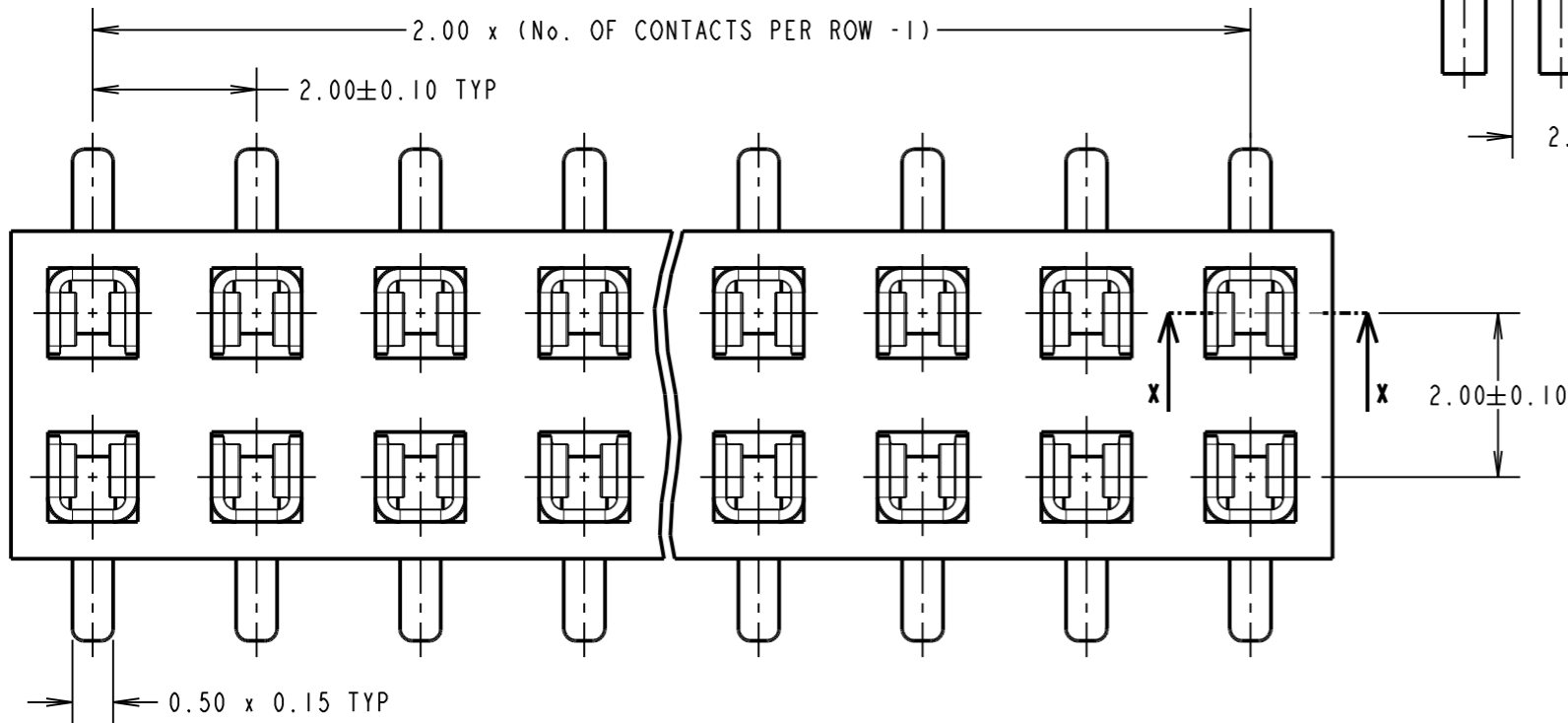
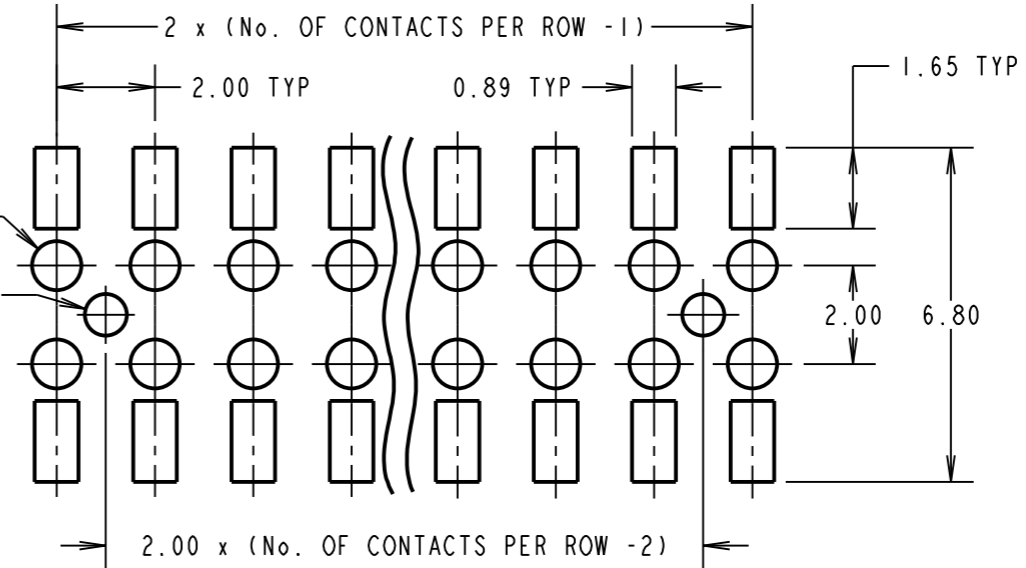
ORDER CODE:
M22-636XXX

No. OF CONTACTS PER ROW: _____
02 TO 20

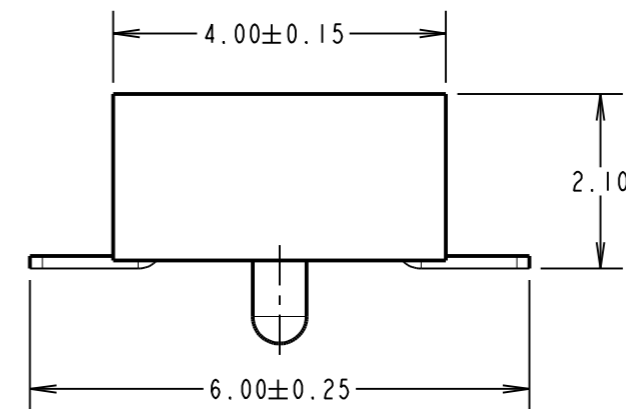
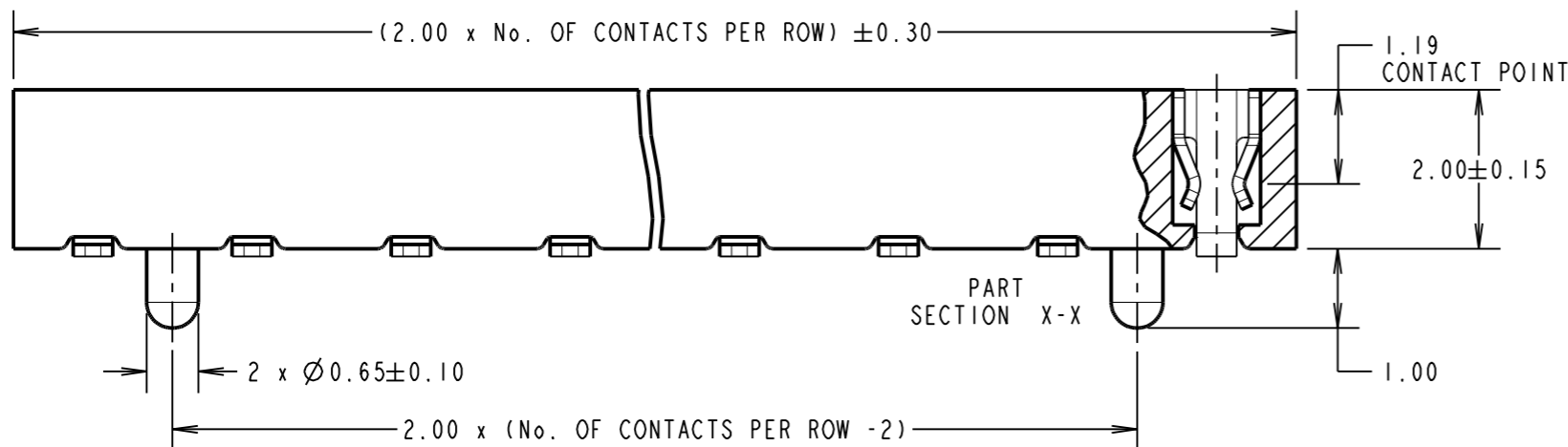
FINISH:
42 - SELECTIVE GOLD FLASH & 100% TIN
46 - 100% TIN

RECOMMENDED PCB LAYOUT
(TOLERANCE = ±0.05)

∅1.00±0.05 TYP
∅0.85^{+0.05}₀ TYP



SPECIFICATION:
MATERIAL = PA9T, UL94V-0, BLACK
CONTACTS = PHOSPHOR BRONZE
FINISH:
42 = NICKEL ALL OVER WITH GOLD FLASH
ON CONTACT AREA AND 100% TIN ON TAILS
46 = 100% TIN OVER NICKEL
ELECTRICAL:
CURRENT RATING = 2A
CONTACT RESISTANCE = 20mΩ MAX
INSULATION RESISTANCE = 1000MΩ MIN
DIELECTRIC WITHSTANDING = 500V AC MIN
MECHANICAL:
INSERTION FORCE = 1.77N MAX
WITHDRAWAL FORCE = 0.25N MIN
ENVIRONMENTAL:
TEMPERATURE RANGE = -40°C TO +105°C
PACKING:
TUBE
FOR COMPLETE SPECIFICATION, SEE COMPONENT
SPECIFICATION C018XX (LATEST ISSUE).



MSP	10	15.06.15	12803
NAME	ISS.	DATE	C/NOTE
APPROVED:		M.PERREN	
CHECKED:		S.BENNETT	
DRAWN:		D.BECK	
CUSTOMER REF.:			
ASSEMBLY DRG:			

NOTES:
1. ALL TOLERANCES ARE ±0.25, UNLESS OTHERWISE STATED.

HARWIN
www.harwin.com
technical@harwin.com

THIS DRAWING AND ANY INFORMATION OR DESCRIPTIVE MATTER SET OUT HEREON ARE CONFIDENTIAL AND COPYRIGHT PROPERTY OF THE HARWIN GROUP AND MUST NOT BE DISCLOSED, LOANED, COPIED OR USED FOR MANUFACTURING, TENDERING OR FOR ANY OTHER PURPOSE WITHOUT THEIR WRITTEN PERMISSION.

TOLERANCES
X = ±1mm
X.X = ±0.50mm
X.XX = ±0.10mm
X.XXX = ±0.01mm
ANGLES = ±5°
UNLESS STATED

MATERIAL:
SEE ABOVE
FINISH:
S/AREA: mm²

TITLE:
2mm PITCH DIL SMT VERTICAL
LOW PROFILE SOCKET ASSEMBLY
DRAWING NUMBER:
M22-636XXX
SHT 2 OF 2