

Customer Information Sheet

DRAWING No.: M30-610XX46 SHEET 2 OF 2

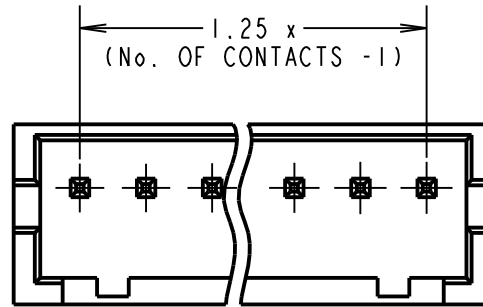
IF IN DOUBT - ASK

©

NOT TO SCALE

THIRD ANGLE PROJECTION

ALL DIMENSIONS IN mm

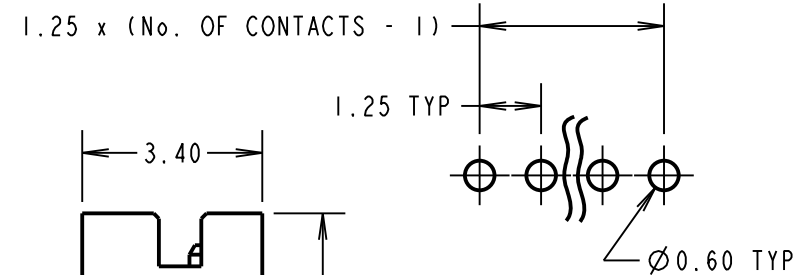


ORDER CODE:
M30-610XX46

No. OF CONTACTS: 02 TO 15

FINISH: 46 = 100% TIN

RECOMMENDED PCB LAYOUT
(TOLERANCE ± 0.05)



SPECIFICATION:

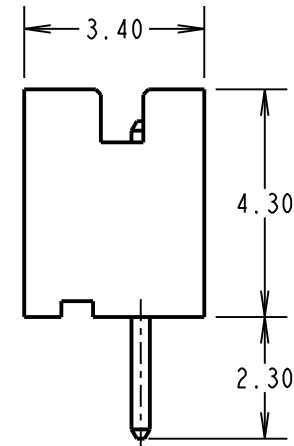
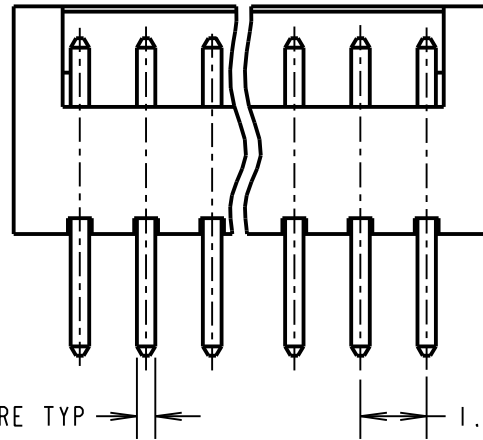
MATERIAL:
MOULDING = NYLON 66, UL94V-0, NATURAL
CONTACTS = BRASS

FINISH:
CONTACTS = 2.03 μ - 2.54 μ 100% TIN
OVER 0.76 μ NICKEL

ELECTRICAL:
CURRENT RATING = 1A AC/DC
VOLTAGE RATING = 100V AC/DC
CONTACT RESISTANCE = 20m Ω MAX
INSULATION RESISTANCE = 500 M Ω MIN
DIELECTRIC WITHSTANDING VOLTAGE = 500V AC
FOR ONE MINUTE

ENVIRONMENTAL:
TEMPERATURE RANGE = -25°C TO +85°C

PACKING:
02 WAY = BOX
03 - 15 WAY = TUBE
FOR COMPLETE SPECIFICATION, SEE COMPONENT
SPECIFICATION C025XX (LATEST ISSUE)



0.35 SQUARE TYP 1.25 TYP

NOTES:

- MATES WITH M30-1050046 AND M30-1060046 CRIMP CONTACTS,
WITH M30-110XX00 CRIMP MOULDING.

SB	9	17.09.12	11801
NAME	ISS.	DATE	C/NOTE
APPROVED: S.BENNETT			
CHECKED: S.FLOWER			
DRAWN: W.BOURNE			
CUSTOMER REF.:			
ASSEMBLY DRG:			

HARWIN

www.harwin.com
technical@harwin.com

THIS DRAWING AND ANY INFORMATION OR DESCRIPTIVE MATTER SET OUT HEREON ARE CONFIDENTIAL AND COPYRIGHT PROPERTY OF THE HARWIN GROUP AND MUST NOT BE DISCLOSED, LOANED, COPIED OR USED FOR MANUFACTURING, TENDERING OR FOR ANY OTHER PURPOSE WITHOUT THEIR WRITTEN PERMISSION.

TOLERANCES
X. = ± 1 mm
X.X = ± 0.25 mm
X.XX = ± 0.10 mm
X.XXX = ± 0.01 mm
ANGLES = $\pm 5^\circ$
UNLESS STATED

MATERIAL:

SEE ABOVE

FINISH: SEE ABOVE

S/AREA: mm²

TITLE:

1.25mm PITCH SIL PC TAIL
BOARD MOUNT CONNECTOR

DRAWING NUMBER:

M30-610XX46

SHT
2 OF 2