

# Customer Information Sheet

DRAWING No.: M50-312XX45R

SHEET 3 OF 4

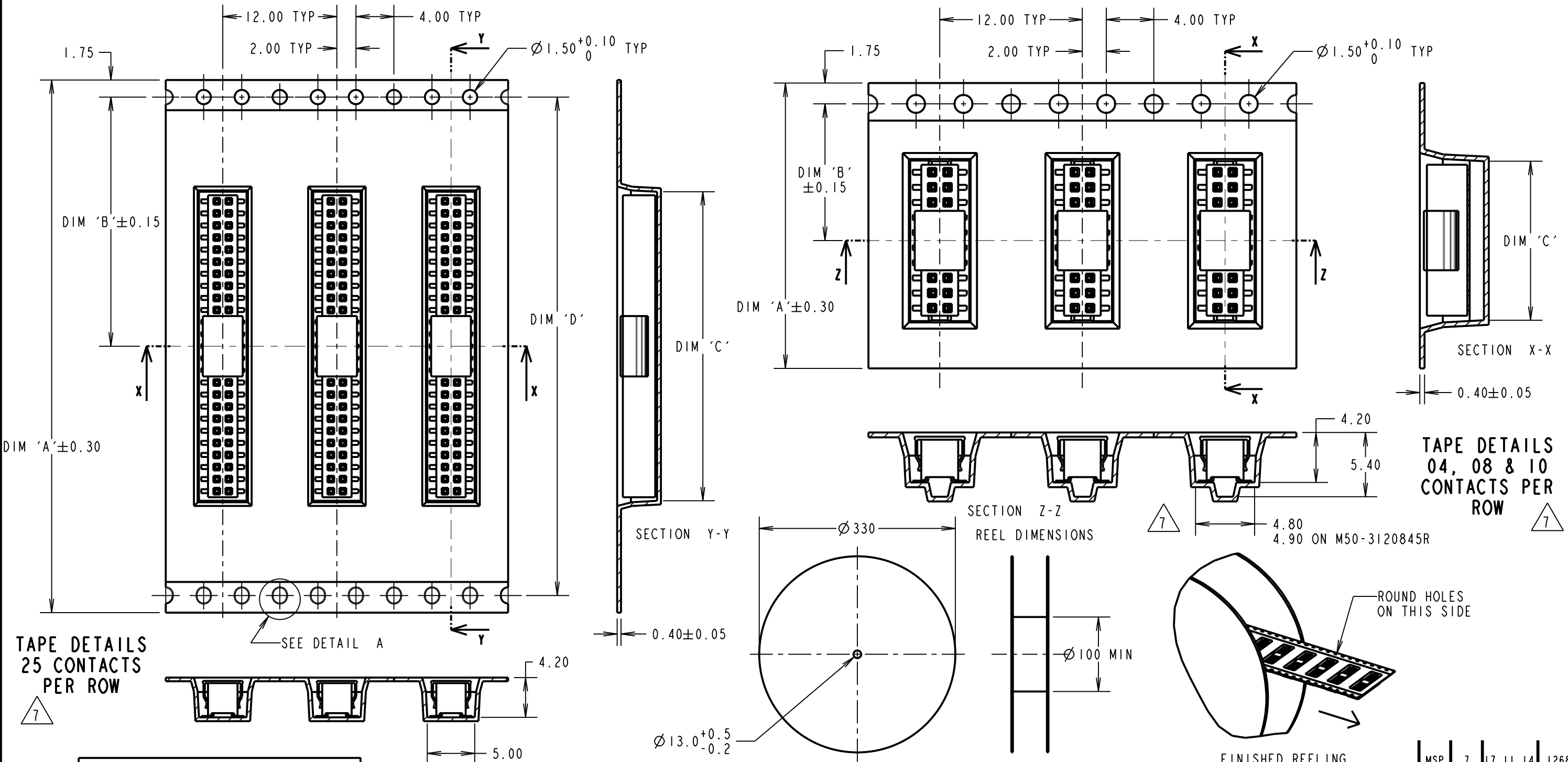
IF IN DOUBT - ASK

(C)

NOT TO SCALE

THIRD ANGLE PROJECTION

ALL DIMENSIONS IN mm



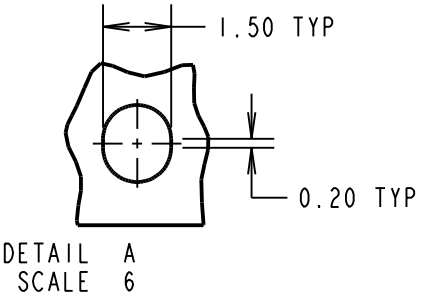
**TAPE DETAILS**  
25 CONTACTS  
PER ROW

**TAPE DETAILS**  
04, 08 & 10  
CONTACTS PER  
ROW

ORDER CODE:  
**M50-312XX45R**

No. OF CONTACTS PER ROW:  
04, 08, 10, 25

FINISH:  
GOLD FLASH OVER NICKEL



REELED PART No.	DIM 'A'	DIM 'B'	DIM 'C'	DIM 'D'
M50-3120445R	16.00±0.30	7.50	5.80±0.15	
M50-3120845R	24.00±0.30	11.50	10.90	
M50-3121045R	24.00±0.30	11.50	16.70	
M50-3122545R	56.00±0.30	26.2±0.15	32.50±0.15	52.40

MSP	7	17.11.14	12681
NAME	ISS.	DATE	C/NOTE
APPROVED:		M. PERREN	
CHECKED:		S. BENNETT	
DRAWN:		JM BROOKES	
CUSTOMER REF.:			
ASSEMBLY DRG.:			

- NOTES:
1. TAPE & REELING IS IN ACCORDANCE WITH EIA-481 (ELECTRONIC INDUSTRIES ASSOCIATION).
  2. CUMULATIVE TOLERANCE OVER 10 PITCHES = ±0.20mm.
  3. QUANTITY PER  $\varnothing 330$ mm REEL = 1000 PIECES.
  4. FOR DETAILS OF INDIVIDUAL COMPONENT SEE SHEET 4. OR DRAWING M50-312XX45.

**HARWIN**

www.harwin.com  
technical@harwin.com

THIS DRAWING AND ANY INFORMATION OR DESCRIPTIVE MATTER SET OUT HEREON ARE CONFIDENTIAL AND COPYRIGHT PROPERTY OF THE HARWIN GROUP AND MUST NOT BE DISCLOSED, LOANED, COPIED OR USED FOR MANUFACTURING, TENDERING OR FOR ANY OTHER PURPOSE WITHOUT THEIR WRITTEN PERMISSION.

**TOLERANCES**

X. = ±1mm  
X.X = ±0.50mm  
X.XX = ±0.10mm  
X.XXX = ±0.01mm

ANGLES = ±5°  
UNLESS STATED

**MATERIAL:**  
SEE ABOVE

**FINISH:**  
SEE ABOVE

**S/AREA:**  
mm<sup>2</sup>

**TITLE:**  
1.27mm PITCH  
VERTICAL SMT SOCKET ASSY  
(T&R WITH P/PLACE CAP)

**DRAWING NUMBER:**  
**M50-312XX45R**

SHT 3 OF 4

# Customer Information Sheet

DRAWING No.: M50-312XX45R SHEET 4 OF 4

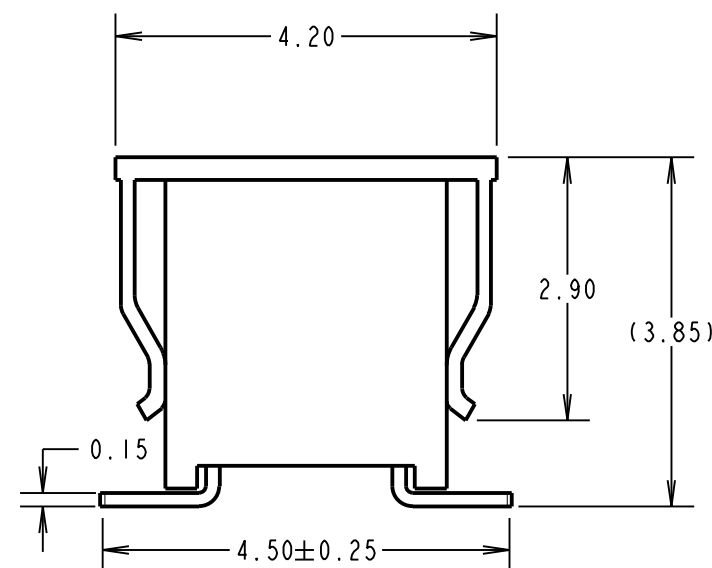
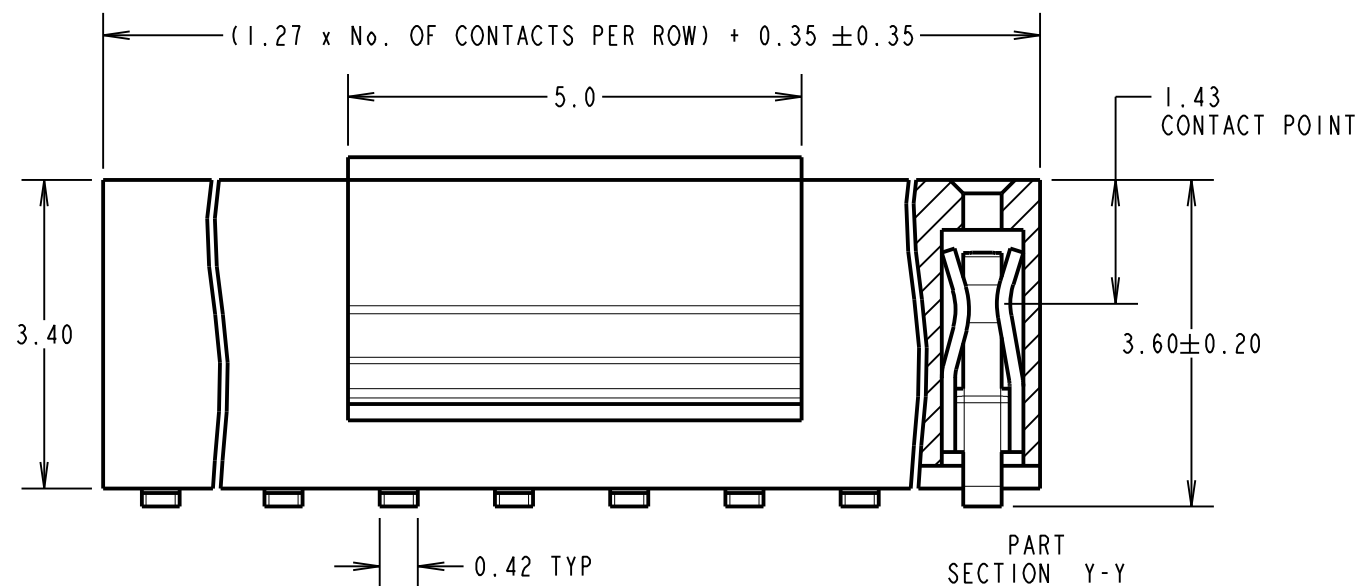
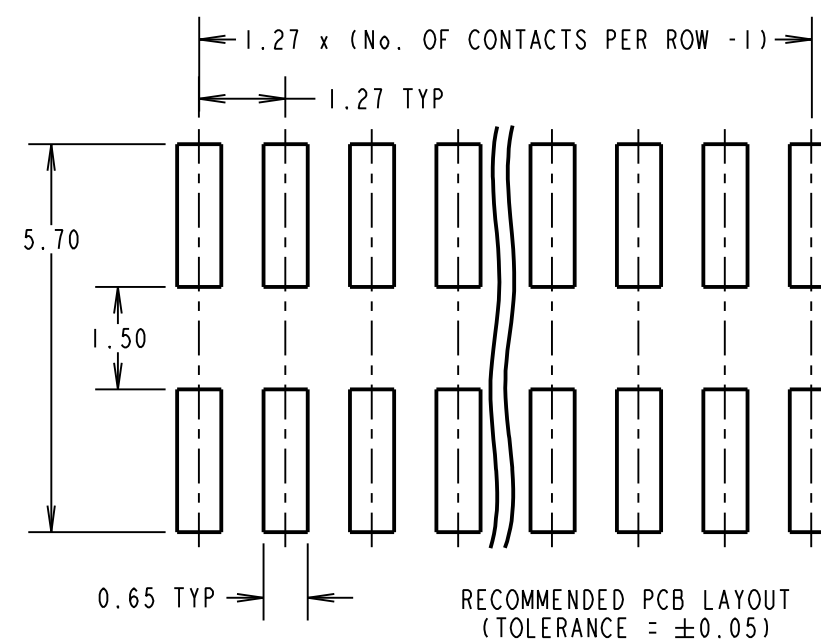
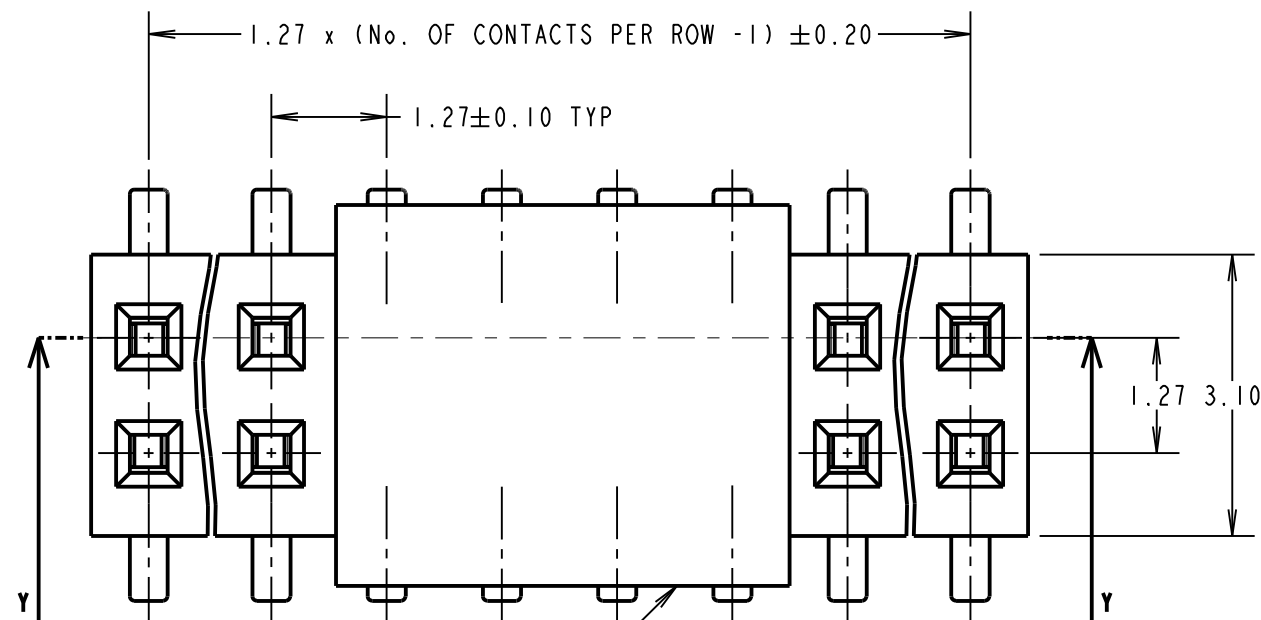
IF IN DOUBT - ASK

©

NOT TO SCALE

THIRD ANGLE PROJECTION

ALL DIMENSIONS IN mm



**SPECIFICATIONS:**

**MATERIAL:**  
 MOULDING = LCP, UL94V-0, BLACK  
 CONTACT = PHOSPHOR BRONZE  
**FINISH:**  
 CONTACT = GOLD FLASH OVER NICKEL  
**ELECTRICAL:**  
 CURRENT RATING = 1A  
 VOLTAGE PROOF = 300V AC, 500V DC FOR ONE MINUTE  
 CONTACT RESISTANCE = 30mΩ MAX  
 INSULATION RESISTANCE = 1000MΩ MIN  
**MECHANICAL:**  
 DURABILITY = 100 CYCLES MIN  
 INSERTION FORCE = 2N MAX PER CONTACT  
 WITHDRAWAL FORCE = 0.15N MIN PER CONTACT  
**ENVIRONMENTAL:**  
 OPERATING TEMPERATURE = -40°C TO +105°C  
**PACKING:**  
 TUBE  
 FOR COMPLETE SPECIFICATION, SEE COMPONENT SPECIFICATION C029XX (LATEST ISSUE)

MSP	7	17.11.14	12681
NAME	ISS.	DATE	C/NOTE
APPROVED:		M. PERREN	
CHECKED:		S. BENNETT	
DRAWN:		JM BROOKES	
CUSTOMER REF.:			
ASSEMBLY DRG.:			

ORDER CODE:

**M50-312XX45R**

No. OF CONTACTS PER ROW: 04, 08, 10, 25

FINISH: GOLD FLASH OVER NICKEL

**NOTES:**

- FOR TAPE & REEL DETAILS, SEE SHEET 3.
- FOR DETAILS OF STANDARD COMPONENT SEE DRAWING M50-312XX45.
- ALL TOLERANCES ARE ±0.15, UNLESS OTHERWISE STATED.

**HARWIN**

www.harwin.com  
 technical@harwin.com

THIS DRAWING AND ANY INFORMATION OR DESCRIPTIVE MATTER SET OUT HEREON ARE CONFIDENTIAL AND COPYRIGHT PROPERTY OF THE HARWIN GROUP AND MUST NOT BE DISCLOSED, LOANED, COPIED OR USED FOR MANUFACTURING, TENDERING OR FOR ANY OTHER PURPOSE WITHOUT THEIR WRITTEN PERMISSION.

**TOLERANCES**  
 X = ±1mm  
 X.X = ±0.50mm  
 X.XX = ±0.10mm  
 X.XXX = ±0.01mm  
 ANGLES = ±5°  
 UNLESS STATED

**MATERIAL:**  
 SEE ABOVE  
**FINISH:**  
 SEE ABOVE  
**S/AREA:**  
 mm<sup>2</sup>

**TITLE:**  
 1.27mm PITCH  
 VERTICAL SMT SOCKET ASSY  
 (T&R WITH P/PLACE CAP)

**DRAWING NUMBER:**  
**M50-312XX45R**  
 SHT 4 OF 4