

Customer Information Sheet

DRAWING No.: M50-315XX42P

SHEET 2 OF 2

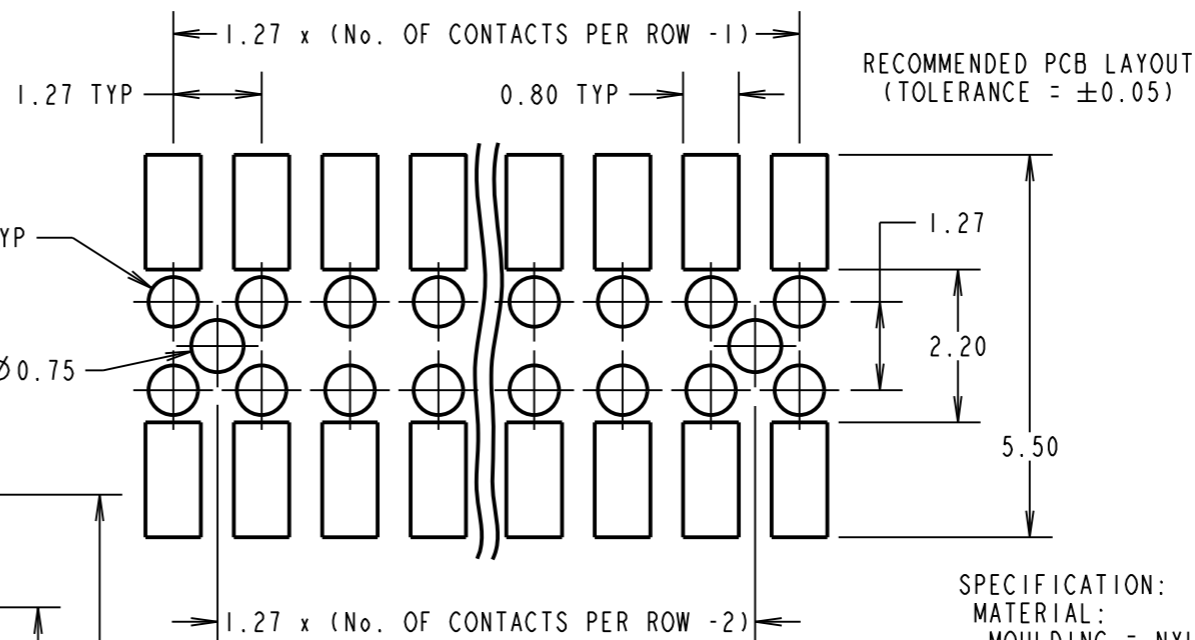
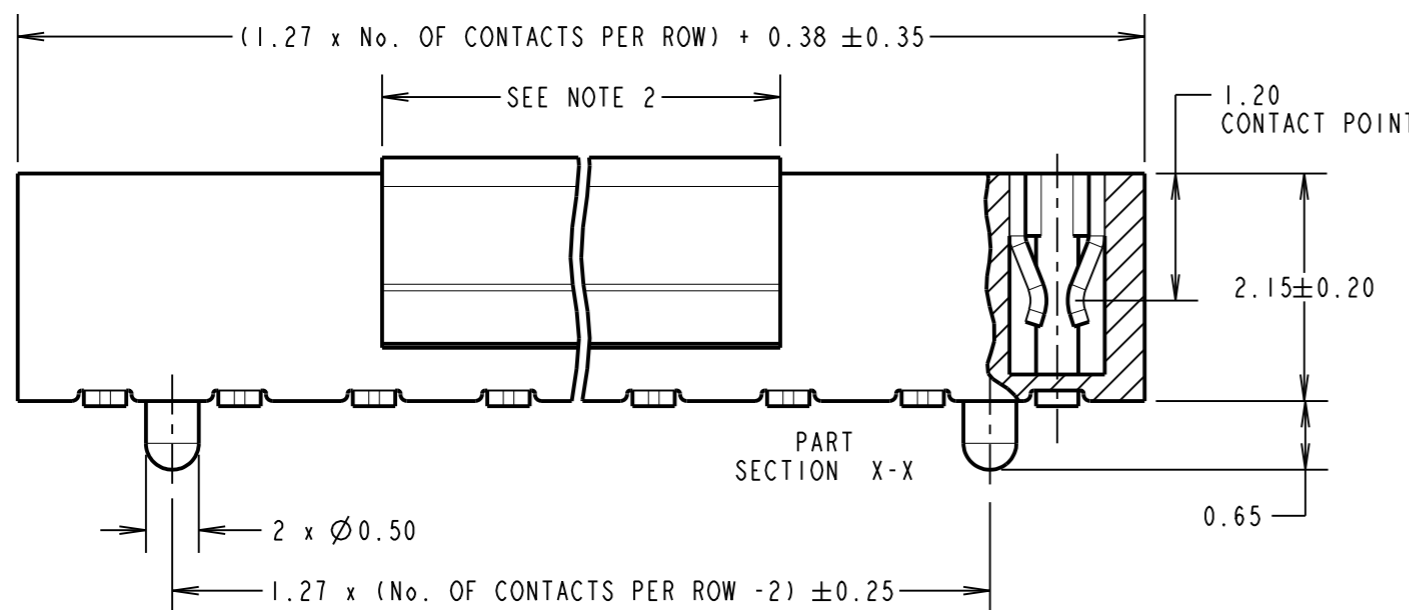
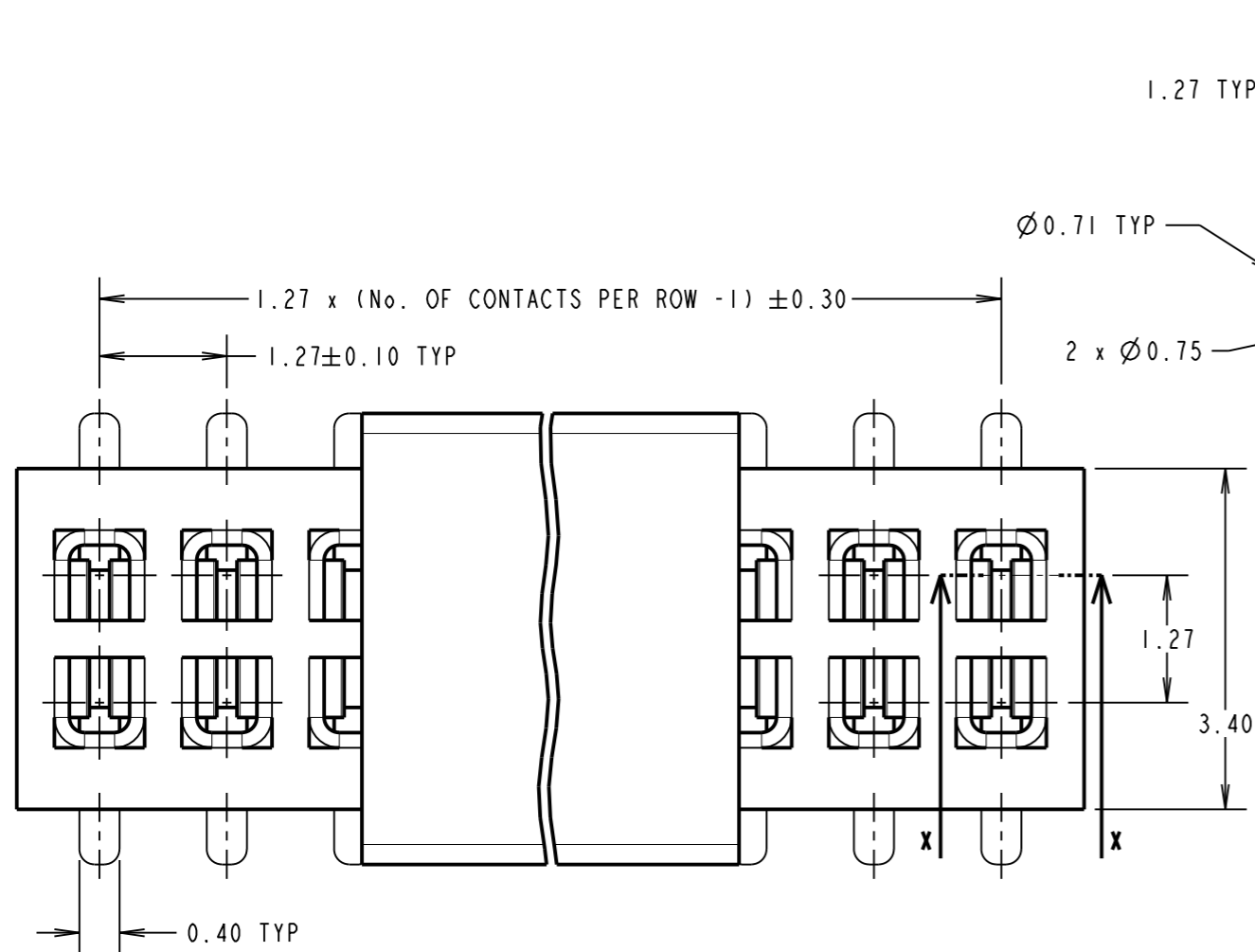
IF IN DOUBT - ASK

(C)

NOT TO SCALE

THIRD ANGLE PROJECTION

ALL DIMENSIONS IN mm



ORDER CODE

M50-315XX42P

No. OF CONTACTS PER ROW: _____

03 TO 40

FINISH: _____

42 = GOLD FLASH + 100% TIN OVER NICKEL

SPECIFICATION:

MATERIAL:
 MOULDING = NYLON-6T, UL94V-0, BLACK
 CONTACTS = PHOSPHOR BRONZE

FINISH:
 CONTACTS = 1.27µ NICKEL ALL OVER,
 GOLD FLASH ON CONTACT AREA,
 2.54µ 100% TIN ON TAILS

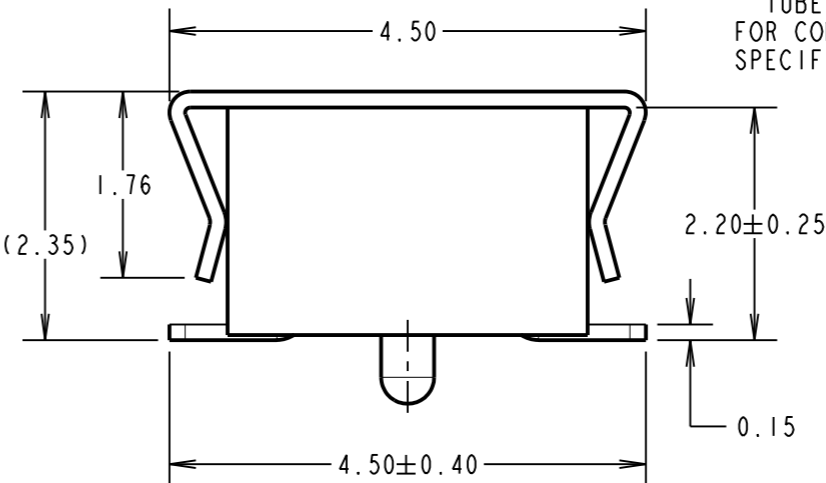
ELECTRICAL:
 CURRENT RATING = 1A
 CONTACT RESISTANCE = 20mΩ MAX
 INSULATION RESISTANCE = 1000MΩ MIN
 DIELECTRIC WITHSTANDING = 500V AC FOR ONE MINUTE

MECHANICAL:
 INSERTION FORCE = 1.5N MAX
 WITHDRAWAL FORCE = 0.2N MIN

ENVIRONMENTAL:
 TEMPERATURE RANGE = -40°C TO +105°C

PACKING:
 TUBE

FOR COMPLETE SPECIFICATION, SEE COMPONENT SPECIFICATION C029XX (LATEST ISSUE)



| | | | |
|----------------|------|-----------|--------|
| SB | 9 | 08.04.13 | 11943 |
| NAME | ISS. | DATE | C/NOTE |
| APPROVED: | | S.BENNETT | |
| CHECKED: | | S.FLOWER | |
| DRAWN: | | J.EVANS | |
| CUSTOMER REF.: | | | |
| ASSEMBLY DRG.: | | | |

- NOTE:
- ALL TOLERANCES ARE ±0.15 UNLESS OTHERWISE STATED.
 - PICK AND PLACE CAP LENGTH = 4.20mm FOR 03 TO 05 CONTACTS PER ROW,
6.90mm FOR 06 TO 40 CONTACTS PER ROW.

HARWIN

www.harwin.com
 technical@harwin.com

THIS DRAWING AND ANY INFORMATION OR DESCRIPTIVE MATTER SET OUT HEREON ARE CONFIDENTIAL AND COPYRIGHT PROPERTY OF THE HARWIN GROUP AND MUST NOT BE DISCLOSED, LOANED, COPIED OR USED FOR MANUFACTURING, TENDERING OR FOR ANY OTHER PURPOSE WITHOUT THEIR WRITTEN PERMISSION.

TOLERANCES
 X = ±1mm
 X.X = ±0.25mm
 X.XX = ±0.10mm
 X.XXX = ±0.01mm
 ANGLES = ±5°
 UNLESS STATED

MATERIAL: SEE ABOVE

FINISH: SEE ABOVE

S/AREA: mm²

TITLE:
 1.27mm PITCH DIL SMT VERT.
 LOW-PROFILE SOCKET ASSY (P&P)

DRAWING NUMBER:
M50-315XX42P

SHT 2 OF 2