

Customer Information Sheet

DRAWING No.: M50-330XX42

SHEET 2 OF 2

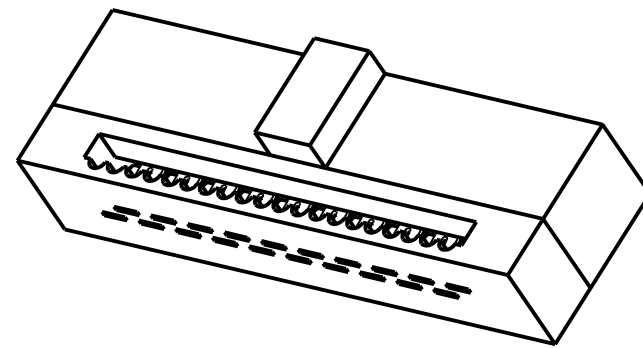
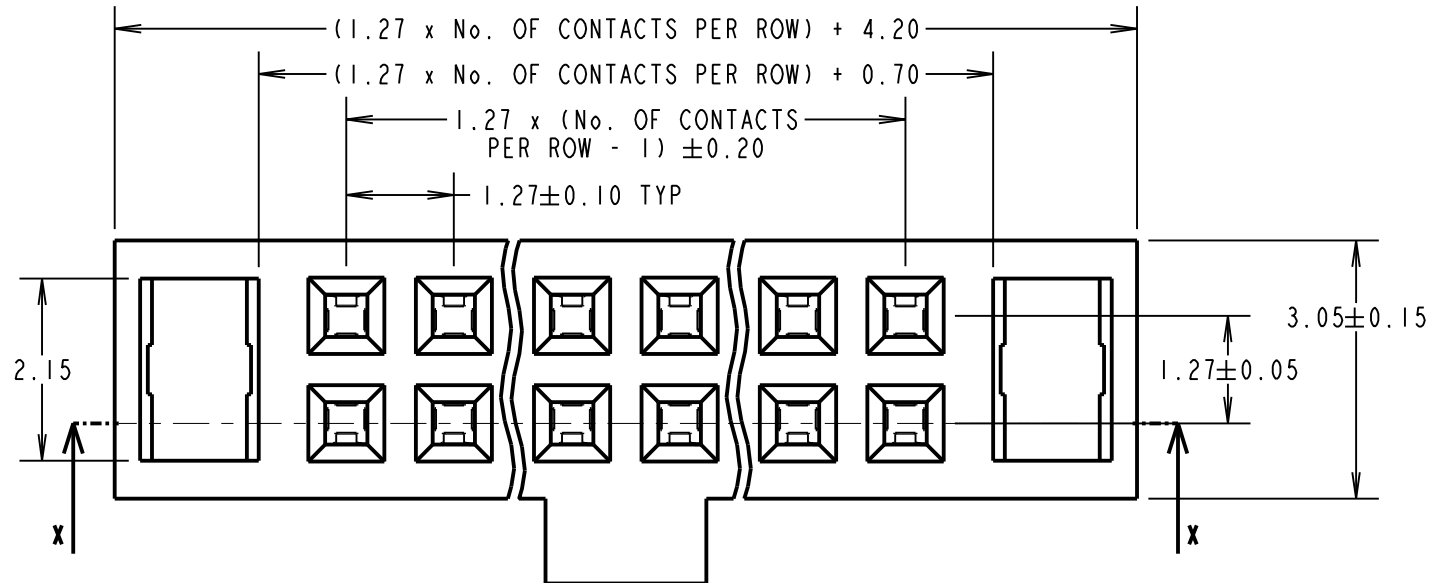
IF IN DOUBT - ASK

©

NOT TO SCALE

THIRD ANGLE PROJECTION

ALL DIMENSIONS IN mm



SPECIFICATIONS:

MATERIALS:

MOULD & CAP= PBT, 30% G/F, UL94V-0

CONTACT = PHOSPHOR BRONZE

FINISH:

42 = $0.015-0.02\mu$ GOLD ON CONTACTS,

2.54μ 100% TIN ON TAILS,

OVER $0.76-2.03\mu$ NICKEL

ELECTRICAL:

RATED CURRENT = 1A

CONTACT RESISTANCE = $20m\Omega$ MAX

WITHSTAND VOLTAGE = 1000V ACrms FOR 1 MIN

INSULATION RESISTANCE = $1000M\Omega$ MIN

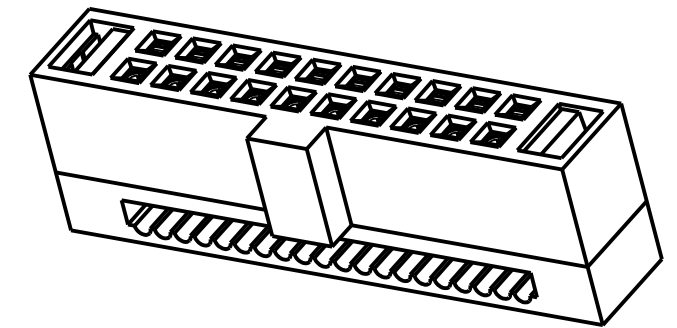
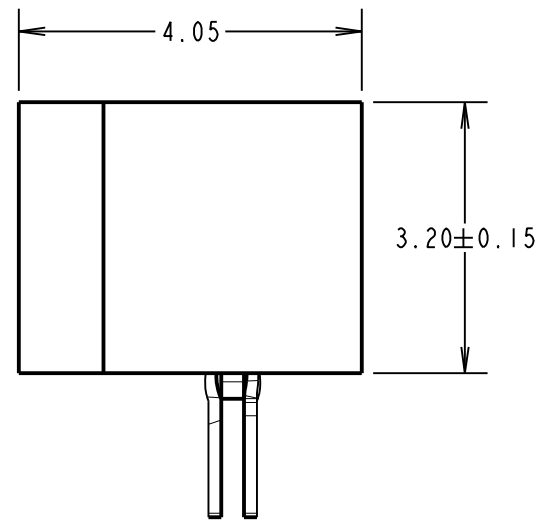
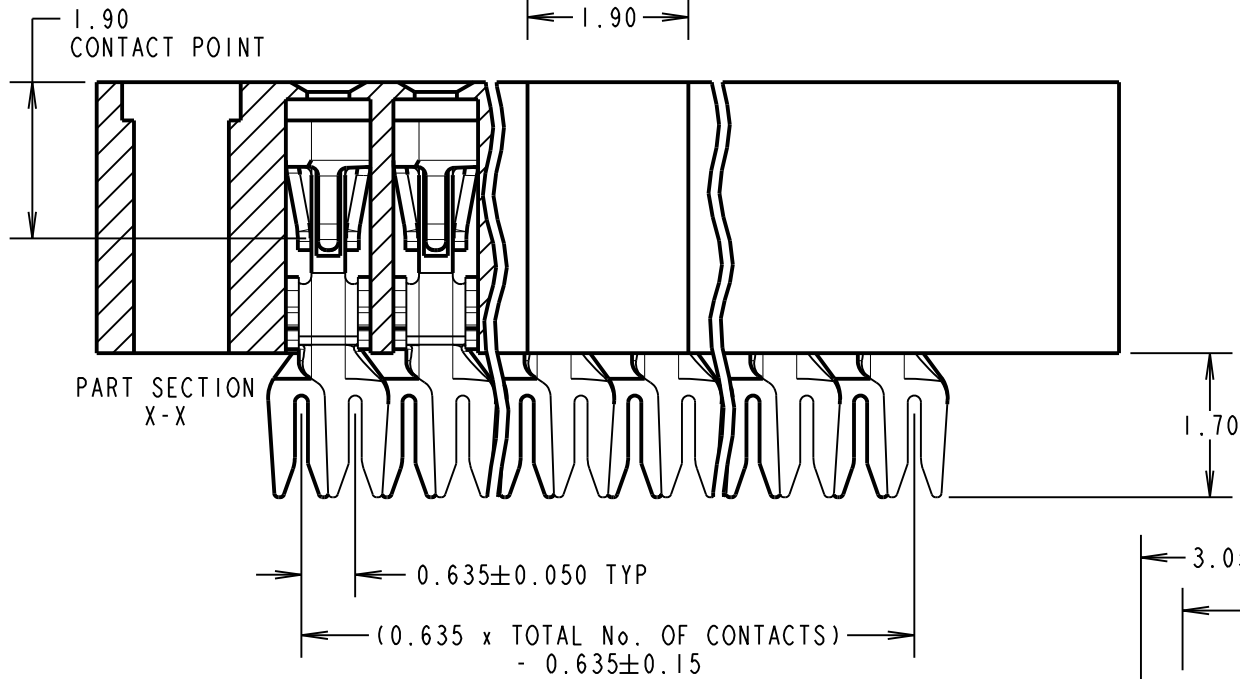
ENVIRONMENTAL:

OPERATING TEMPERATURE = $-40^{\circ}C$ TO $+105^{\circ}C$

PACKING:

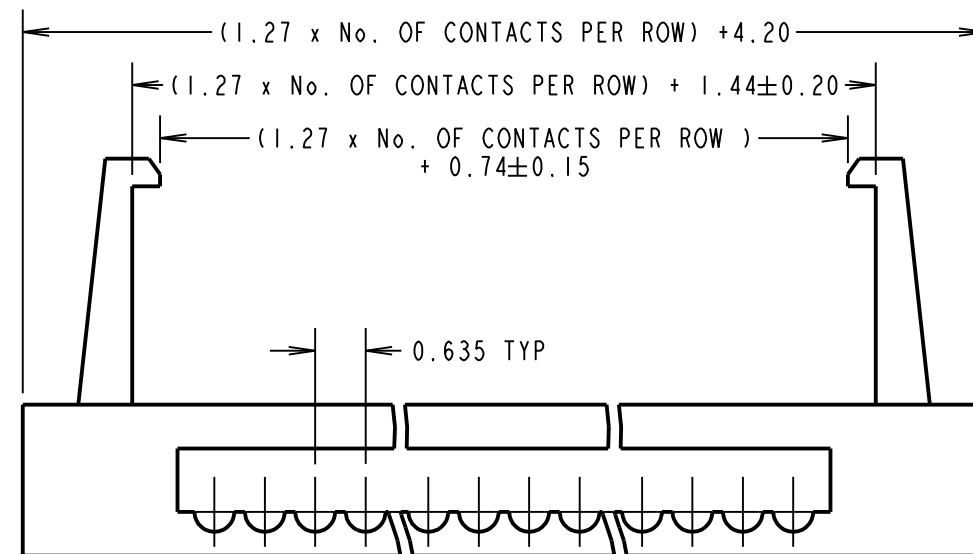
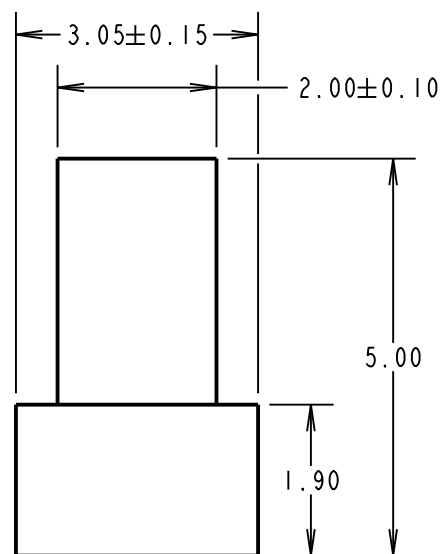
TUBE

FOR COMPLETE SPECIFICATION, SEE COMPONENT SPECIFICATION C029XX (LATEST ISSUE)



NOTES:

- ALL TOLERANCES ARE ± 0.25 UNLESS OTHERWISE STATED.
- CONNECTOR IS RoHS AND REACH COMPLIANT.
- CONNECTOR IS TO BE USED WITH 30AWG WIRE.



SB	7	08.06.15	12955
NAME	ISS.	DATE	C/NOTE
APPROVED:		S.BENNETT	
CHECKED:		M.PLESTED	
DRAWN:		R.ADDE	
CUSTOMER REF.:			
ASSEMBLY DRG:			

ORDER CODE: M50-330XX42

No. OF CONTACTS PER ROW:
05, 06, 07, 08, 10,
13, 17, 20, 25

FINISH:
SELECTIVE GOLD, TIN

HARWIN

www.harwin.com
technical@harwin.com

THIS DRAWING AND ANY INFORMATION OR DESCRIPTIVE MATTER SET OUT HEREON ARE CONFIDENTIAL AND COPYRIGHT PROPERTY OF THE HARWIN GROUP AND MUST NOT BE DISCLOSED, LOANED, COPIED OR USED FOR MANUFACTURING, TENDERING OR FOR ANY OTHER PURPOSE WITHOUT THEIR WRITTEN PERMISSION.

TOLERANCES
~~X = ± 1 mm~~
~~X.X = ± 0.50 mm~~
~~X.XX = ± 0.10 mm~~
~~X.XXX = ± 0.01 mm~~
 ANGLES = $\pm 5^{\circ}$
 UNLESS STATED

MATERIAL:
SEE ABOVE
FINISH: SEE ABOVE
S/AREA: mm²

TITLE:
1.27mm DIL IDC
RIBBON CABLE CONNECTOR

DRAWING NUMBER:
M50-330XX42

SHT
2 OF 2