

# Customer Information Sheet

DRAWING No.: M80-25300XX & M80-25400XX SHT 5 OF 5

IF IN DOUBT - ASK

(C)

NOT TO SCALE

THIRD ANGLE PROJECTION

ALL DIMENSIONS IN mm

## SPECIFICATION:

MATERIAL:  
BERYLLIUM COPPER

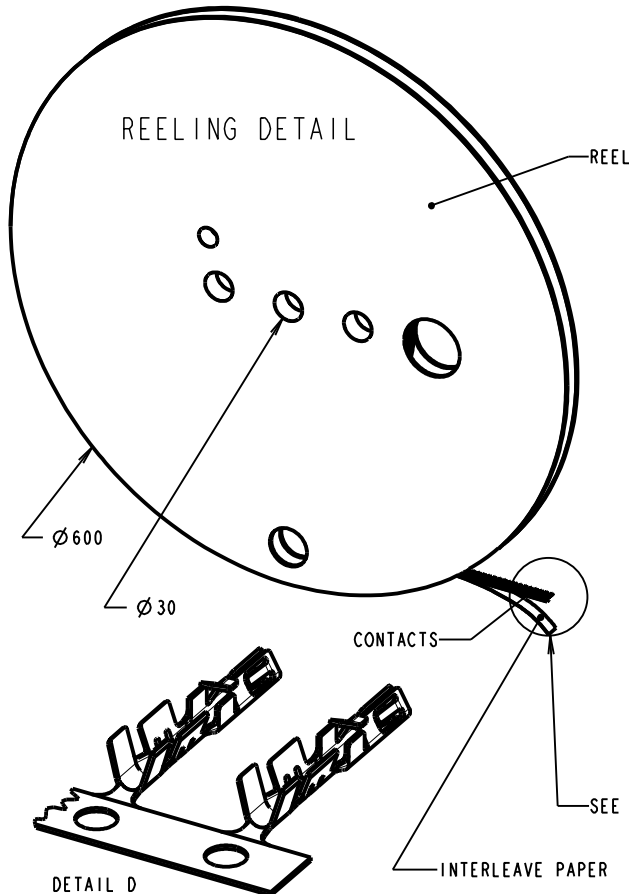
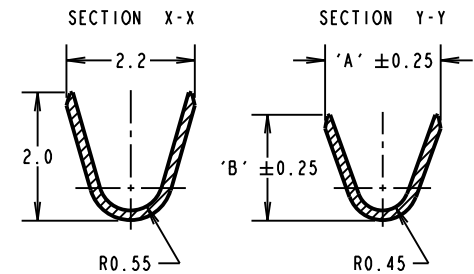
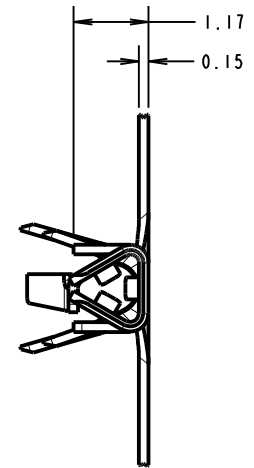
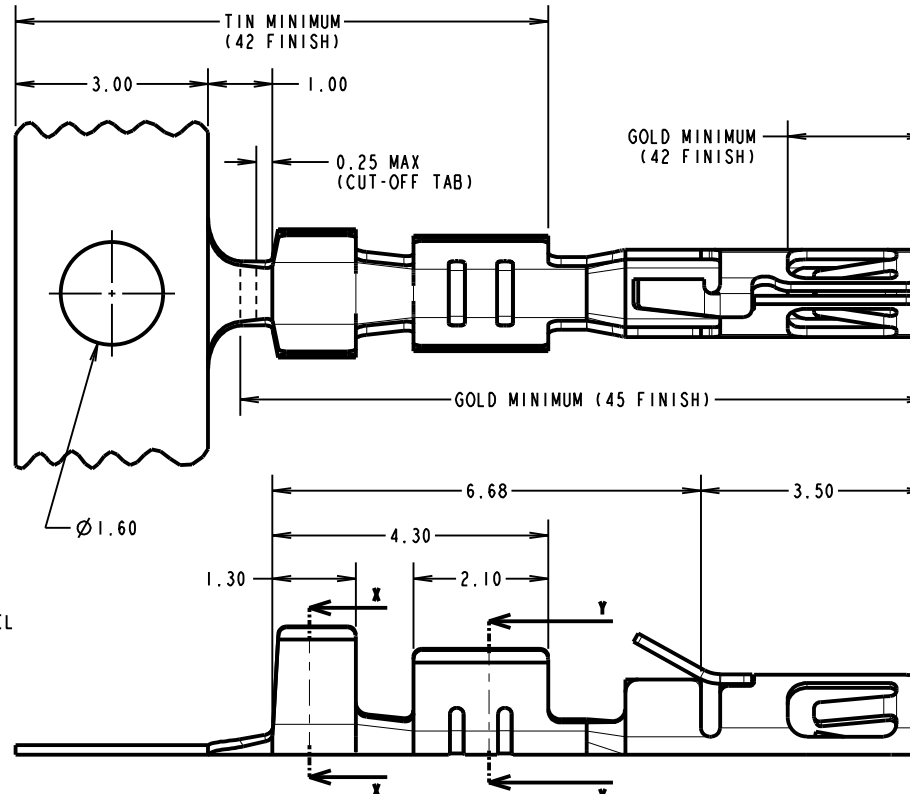
FINISH (ALL OVER NICKEL):  
45 = 0.3µ MIN GOLD  
42 = 3µ MIN 100% TIN AND 0.3µ MIN GOLD,  
SELECTIVE PLATE

MECHANICAL:  
INSERTION FORCE = 2.8N MAX, 1.0N MIN  
WITHDRAWAL FORCE = 1.8N MAX, 0.2N MIN  
DURABILITY = 400 OPERATIONS

ENVIRONMENTAL:  
OPERATING TEMPERATURE = -55°C TO +125°C

PACKING:  
REEL (AS SHOWN), 15K/REEL

FOR COMPLETE CONNECTOR SPECIFICATION, SEE  
COMPONENT SPECIFICATION C040XX (LATEST ISSUE)



### NOTES:

- TO BE USED WITH THE FOLLOWING FEMALE HOUSING:  
M80-454XX98 = HOUSING ONLY  
M80-455XX98 = HOUSING + SLOTTED JACKSCREW  
M80-456XX98 = HOUSING + HEX SOCKET JACKSCREW  
M80-457XX98 = HOUSING + REVERSE FIX JACKSCREW  
M80-458XX98 = HOUSING + GUIDE AND BOARD MOUNT  
M80-459XX98 = HOUSING + 101LOK JACKSCREWS
- RECOMMENDED WIRE TYPE = BS 3G 210 TYPE A,  
WIRE 22-28 AWG, WIRE INSULATION Ø 0.6mm-Ø 1.1mm,  
STRIP WIRE BY 2.7-3.0mm FOR CRIMPING.
- RECOMMENDED CRIMP HEIGHTS:  
0.76-0.82mm FOR 22-24 AWG CONTACTS  
0.50-0.56mm FOR 26-28 AWG CONTACTS
- SUITABLE FOR PROCESSING WITH LEFT SIDE  
FEED CRIMPING PRESS.  
CONTACT [datamate@harwin.com](mailto:datamate@harwin.com) FOR DETAILS.
- CONTACTS ARE AVAILABLE LOOSE, PART NUMBER  
M80-28300XX FOR 24-22 AWG WIRE AND  
M80-28400XX FOR 28-26 AWG WIRE, SUITABLE FOR  
PROCESSING WITH HAND CRIMP TOOL Z80-255.

PART No.	DIMENSION	
	'A'	'B'
M80-25300XX	1.80	1.65
M80-25400XX	1.34	1.00

ORDER CODE: **M80-XXX00XX**

WIRE SIZE: \_\_\_\_\_  
 253 = 24-22 AWG (0.22-0.34mm<sup>2</sup>)  
 254 = 28-26 AWG (0.08-0.12mm<sup>2</sup>)

FINISH: \_\_\_\_\_  
 45 = GOLD ALL OVER  
 42 = 100% TIN & GOLD SELECTIVE

MSP	6	05.11.14	12665
NAME	ISS.	DATE	C/NOTE
APPROVED:			
CHECKED:			
DRAWN: B. M. KENT			
CUSTOMER REF.:			
ASSEMBLY DRG:			

# HARWIN

[www.harwin.com](http://www.harwin.com)  
[technical@harwin.com](mailto:technical@harwin.com)

THIS DRAWING AND ANY  
 INFORMATION OR DESCRIPTIVE  
 MATTER SET OUT HEREON ARE  
 CONFIDENTIAL AND COPYRIGHT  
 PROPERTY OF THE HARWIN  
 GROUP AND MUST NOT BE  
 DISCLOSED, LOANED, COPIED  
 OR USED FOR MANUFACTURING,  
 TENDERING OR FOR ANY  
 OTHER PURPOSE WITHOUT  
 THEIR WRITTEN PERMISSION.

TOLERANCES  
 X. = ± 1mm  
 X.X = ± 0.50mm  
 X.XX = ± 0.10mm  
 X.XXX = ± 0.01mm  
 ANGLES = ± 5°  
 UNLESS STATED

MATERIAL: SEE ABOVE  
 FINISH: SEE ABOVE  
 S/AREA: mm<sup>2</sup>

TITLE: DATAMATE TRIO-TEK  
 FEMALE CRIMP CONTACT REELED  
 24-22 AWG & 28-26 AWG

DRAWING NUMBER:  
**M80-25300XX & M80-25400XX**

SHT  
 5  
 OF 5