

# Customer Information Sheet

DRAWING No.: M80-710XXXX

SHEET 2 OF 2

IF IN DOUBT - ASK

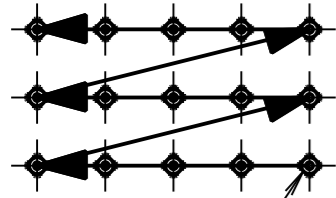
©

NOT TO SCALE

THIRD ANGLE PROJECTION

ALL DIMENSIONS IN mm

- NOTES:
- FROM No. 1 POSITION, CONTACTS NUMBERED IN SEQUENCE FROM RIGHT TO LEFT AND FROM BOTTOM ROW TO TOP ROW (LOOKING ON MATING FACE).
  - FOR COMPLETE SPECIFICATION, SEE COMPONENT SPECIFICATION C017XX (LATEST ISSUE).



CONTACT No. 1

**SPECIFICATION**

**MATERIALS:**  
 MOULDING = POLYAMIDE 46 UL94V-0  
 CONTACTS = BRASS  
 JACKSCREWS, WASHERS & NUTS = STAINLESS STEEL

**FINISH:**  
**POWER CONTACTS:**  
 05 = 0.25 - 0.3µ 100% GOLD  
 22 = 0.75µ GOLD, TIN/LEAD SOLDER OVER TAILS  
 42 = 0.75µ GOLD, 100% TIN SOLDER OVER TAILS

**PIN CONTACTS:**  
 05 = 0.25 - 0.3µ 100% GOLD  
 22 = 0.75µ GOLD, 3.0µ 90/10 TIN/LEAD OVER TAILS  
 42 = 0.75µ GOLD, 3.0µ 100% TIN ON TAILS

**ELECTRICAL:**  
 CURRENT RATING AT 25°C = 3.0A MAX  
 CURRENT RATING AT 85°C = 2.2A MAX  
 VOLTAGE PROOF = 360V AC/DC

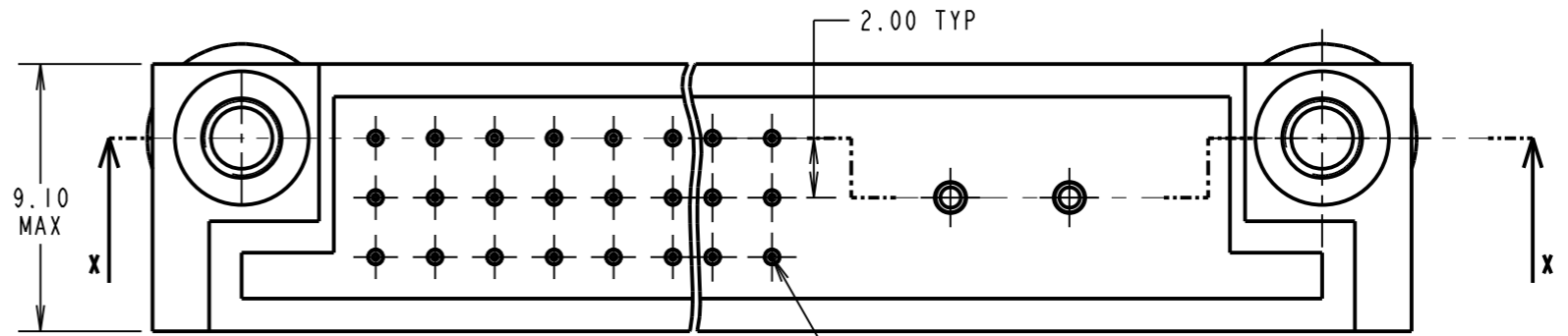
**CONTACT RESISTANCE:**  
 INITIAL = 20mΩ MAX  
 AFTER CONDITIONING = 25mΩ MAX

**INSULATION RESISTANCE:**  
 INITIAL = 1000MΩ MIN  
 AFTER CONDITIONING = 100MΩ MIN

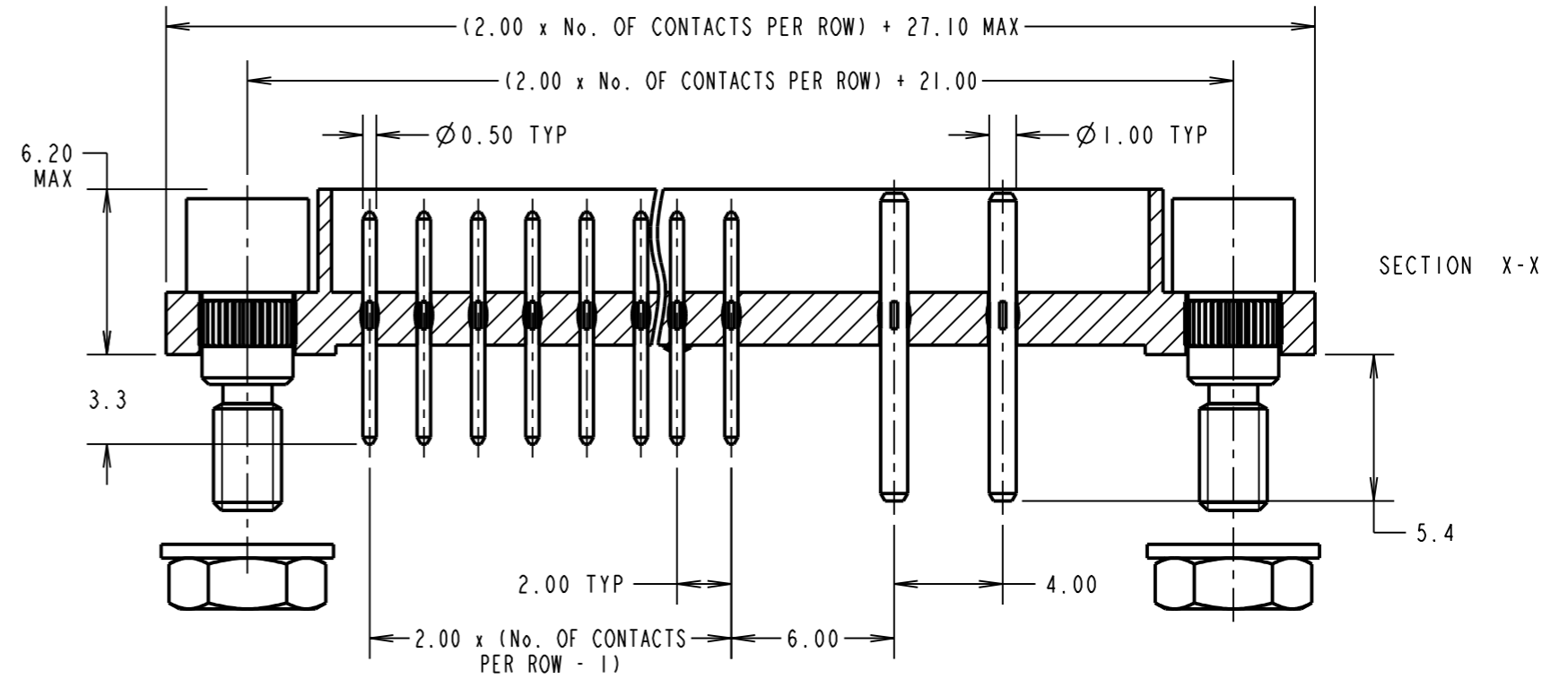
**MECHANICAL:**  
 DURABILITY = 500 OPERATIONS

**ENVIRONMENTAL:**  
 TEMPERATURE RANGE = -55°C TO +125°C

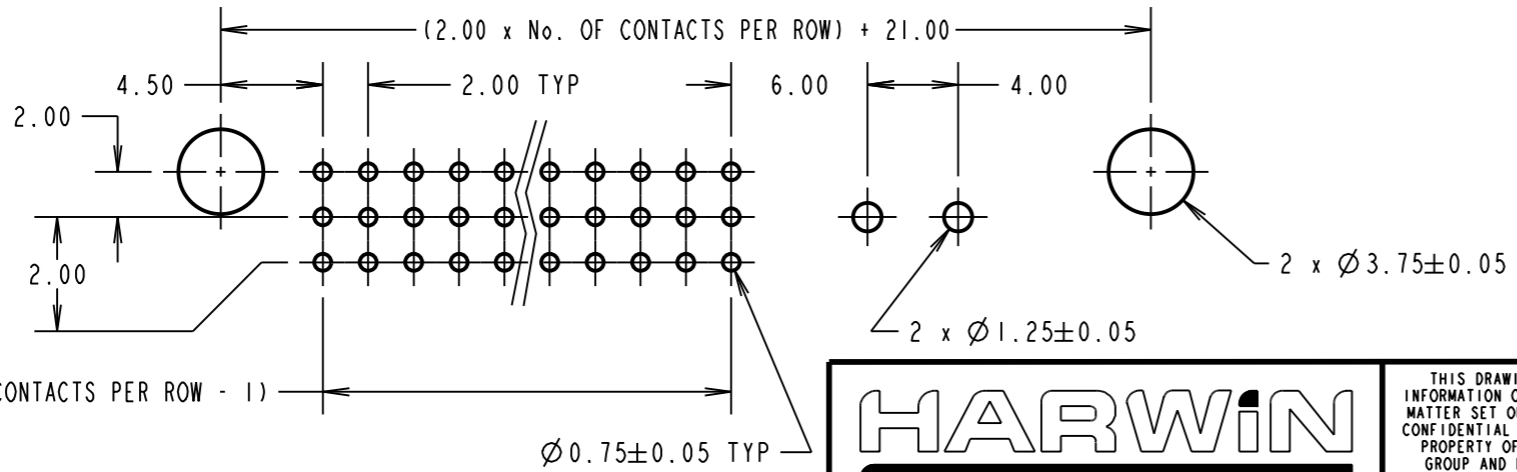
**PACKING:**  
 TRAYS



CONTACT No. 1 (SEE NOTE 1)



**RECOMMENDED PCB LAYOUT**



ORDER CODE: **M80-710XXXX**

TOTAL No. OF CONTACTS (EXCLUDING POWER CONTACTS)  
 06, 15, 24, 30, 42

FINISH:  
 05 - GOLD  
 22 - SELECTIVE GOLD + TIN/LEAD  
 42 - SELECTIVE GOLD + 100% TIN

MSP	10	21.04.15	12811
NAME	ISS.	DATE	C/NOTE
APPROVED: M.PERREN			
CHECKED: S.BENNETT			
DRAWN: D. BECK			
CUSTOMER REF.:			
ASSEMBLY DRG:			

**HARWIN**

www.harwin.com  
 technical@harwin.com

THIS DRAWING AND ANY INFORMATION OR DESCRIPTIVE MATTER SET OUT HEREON ARE CONFIDENTIAL AND COPYRIGHT PROPERTY OF THE HARWIN GROUP AND MUST NOT BE DISCLOSED, LOANED, COPIED OR USED FOR MANUFACTURING, TENDERING OR FOR ANY OTHER PURPOSE WITHOUT THEIR WRITTEN PERMISSION.

**TOLERANCES**  
 X. = ±1mm  
 X.X = ±0.50mm  
 X.XX = ±0.10mm  
 X.XXX = ±0.01mm  
 ANGLES = ±5°  
 UNLESS STATED

**MATERIAL:**  
 SEE ABOVE

**FINISH:**  
 SEE ABOVE

**S/AREA:**  
 mm<sup>2</sup>

**TITLE:** 3-ROW 2mm PITCH CONNECTOR, MALE STRAIGHT PC TAILS + POWER CONTACTS

**DRAWING NUMBER:** M80-710XXXX

SHT 2 OF 2